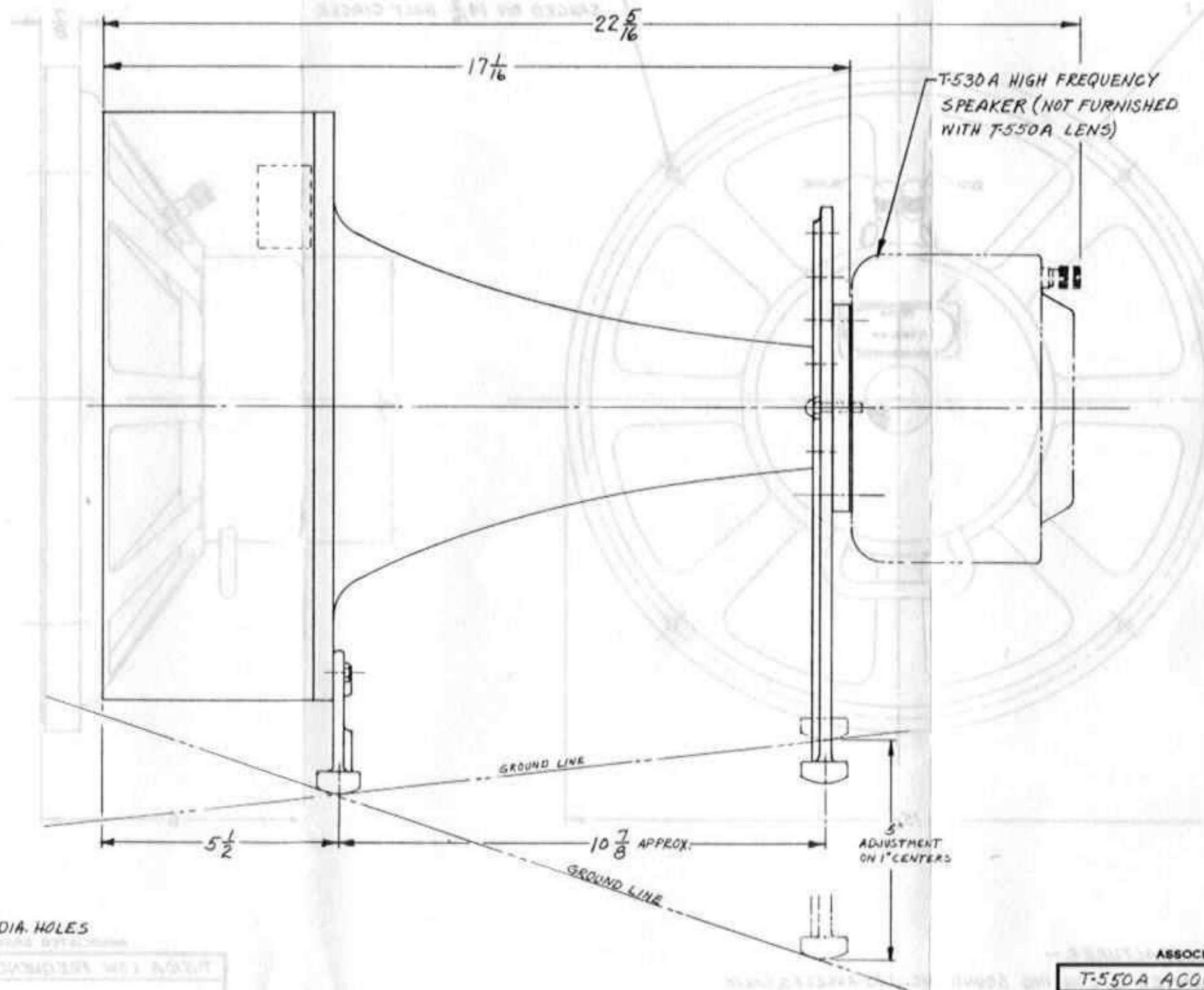
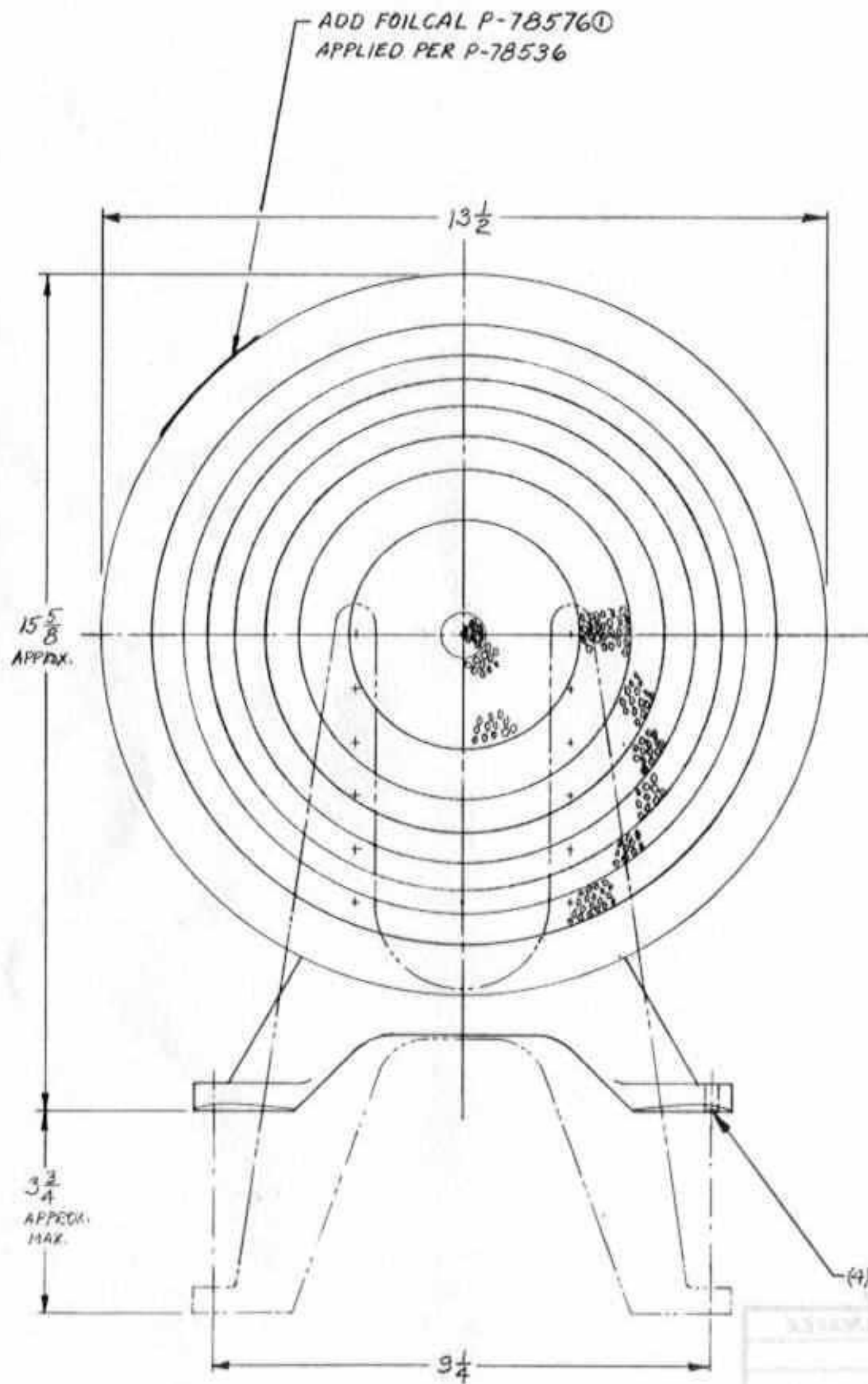




BULLETIN NO. 283  
(SUPPLEMENTING E.B. #262 & #263)

LOUDES  
WESTREX  
T550A  
5



(4) 9/32 DIA. HOLES

DATE	BY	CHKD.	APP'D.
12-1-53	JAF		
ASO-73028			

MANUFACTURER -  
JAMES B. LANSING SOUND, INC.; LOS ANGELES, CAL.  
MODEL NO. 537-500 ROUSTICAL LENS ASSEMBLY

ASO-73028

ASSOCIATED DRAWING	
T-550A ACOUSTIC ASSEMBLY	
OUTLINE DRAWING	
WESTREX CORPORATION HOLLYWOOD DISTRICT	
DRAWN BY: JAF	CHECKED: [ ]
DATE: 12-1-53	
SCALE: HALF	ASO



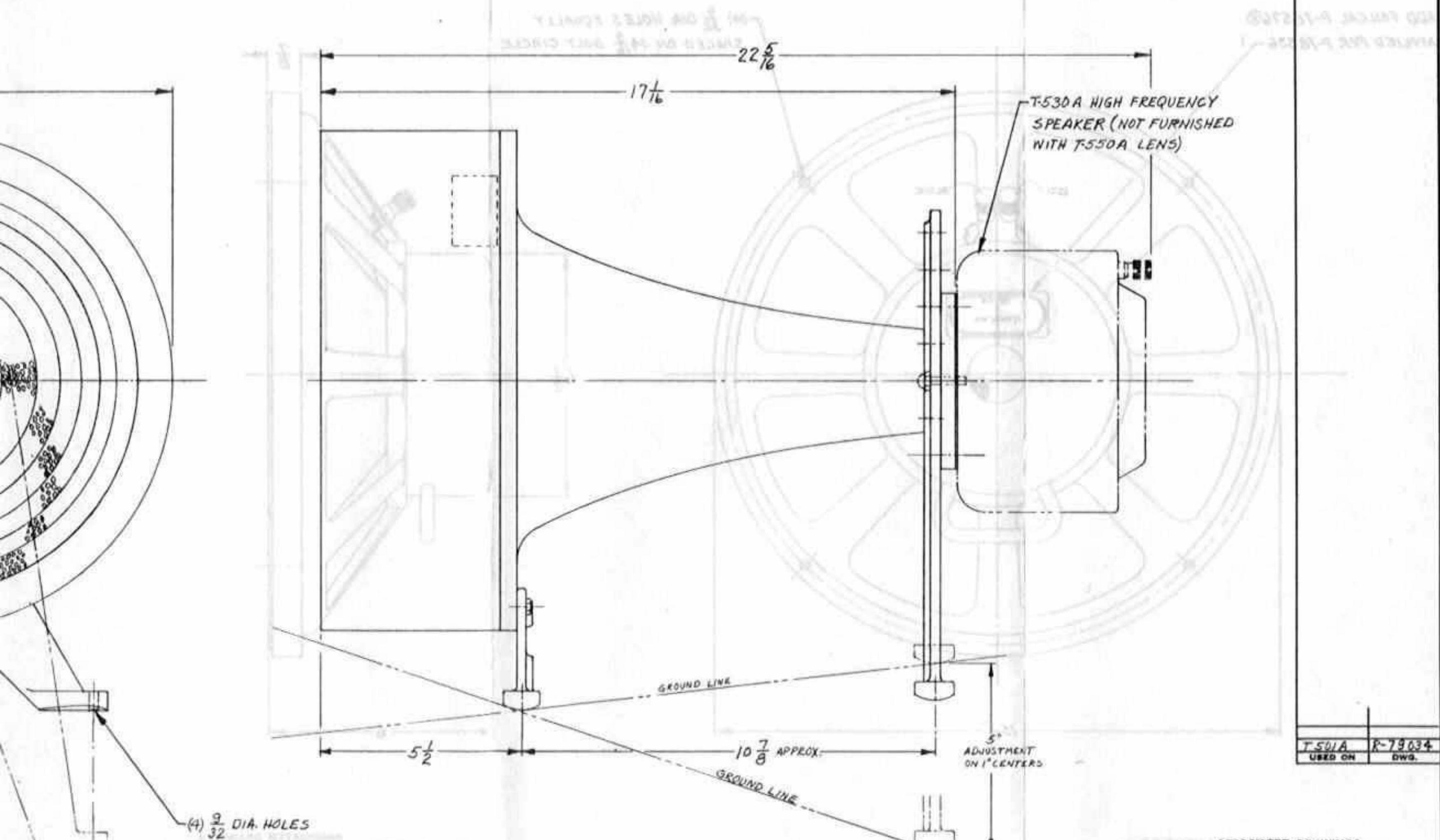
FILE 4.22

BULLETIN NO. 283  
(SUPPLEMENTING E.B. #262 & #263)

LOUDSPEAKER SYSTEMS  
WESTREX T500 SERIES  
T550A ACOUSTIC LENS  
5 PAGES - PAGE 1

ISSUE 1. 12-16-53

60



T-550A	R-79034
USED ON	DWG.

MANUFACTURER -  
JAMES B. LANSING SOUND, INC.; LOS ANGELES, CAL.  
MODEL NO. 537-500 ROUSTICAL LENS ASSEMBLY

WESTREX CORPORATION  
HOLLYWOOD DIVISION

ASSOCIATED DRAWINGS			
T-550A ACOUSTIC LENS			
ASSEMBLY			
OUTLINE DRAWING			
WESTREX CORPORATION			
HOLLYWOOD DIVISION			
DRAWN BY: JAF	CHECKED:	ENG.:	APPRO.:
DATE: 12-1-53			
SCALE: HALF	ASO-79028		

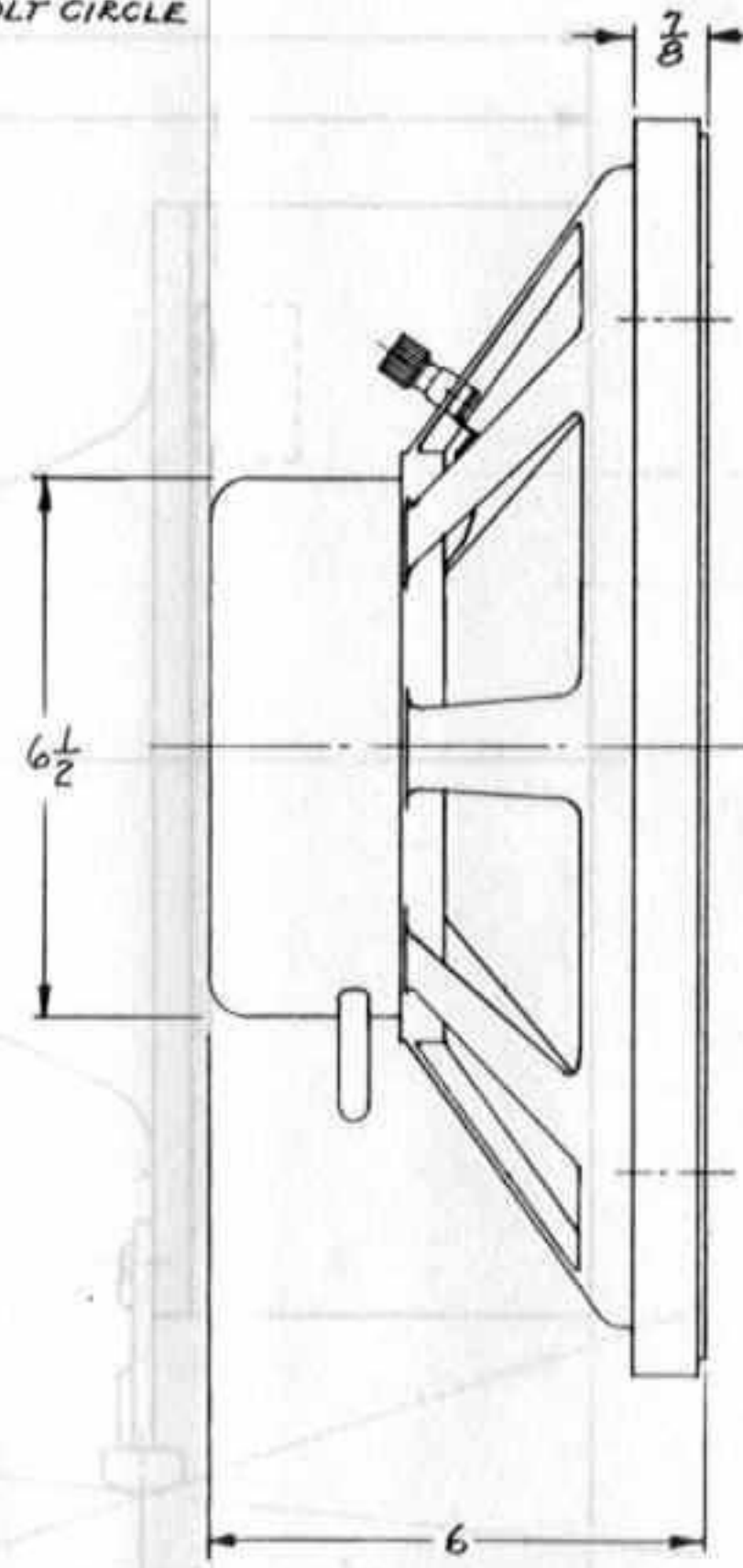
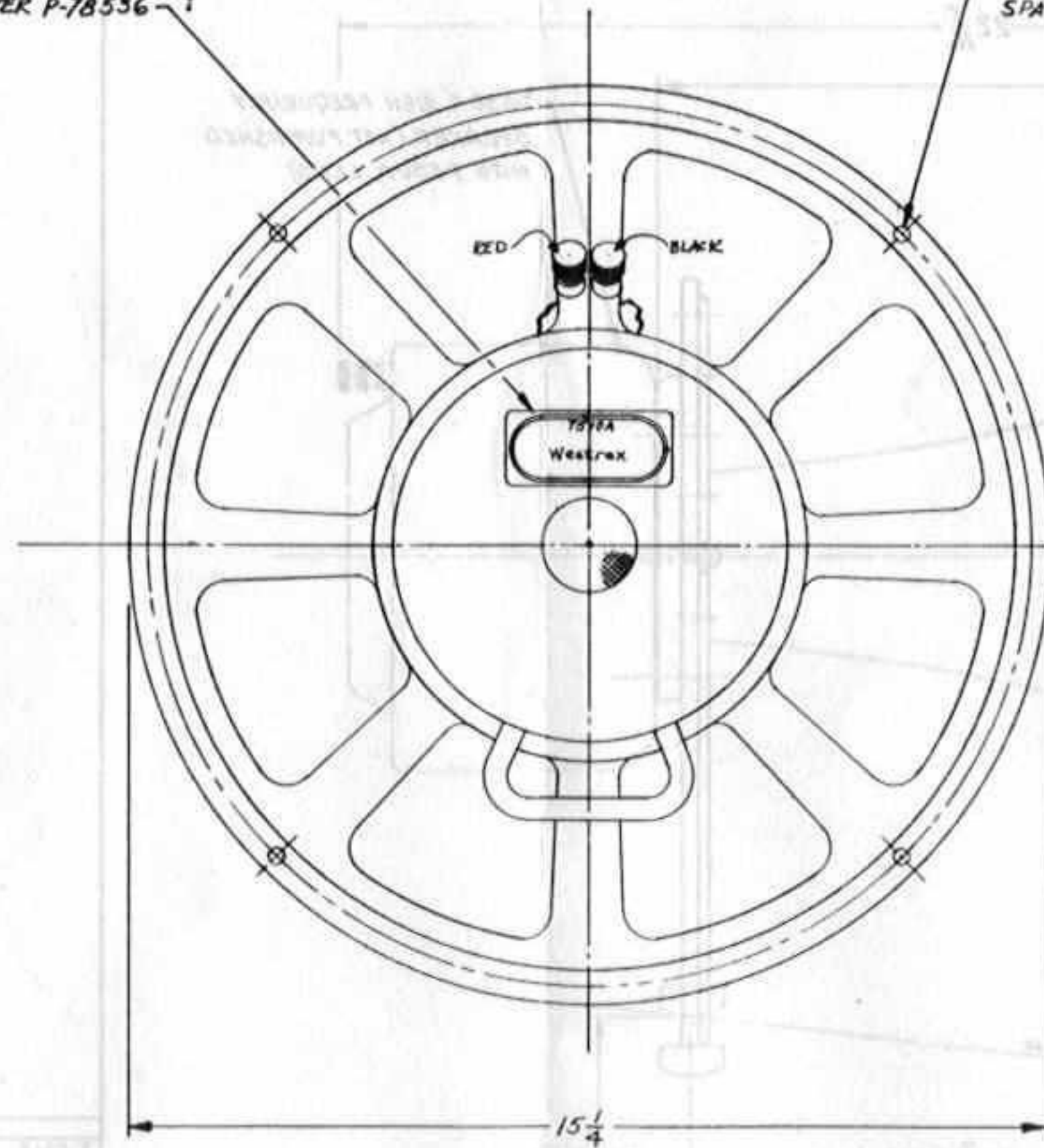


LOUDSPEAKER SYSTEMS  
WESTREX T500 SERIES  
T510A LOW FREQUENCY SPEAKER  
5 PAGES - PAGE 2

BULLETIN NO. 283  
(SUPPLEMENTING E.B. #262 & #263)

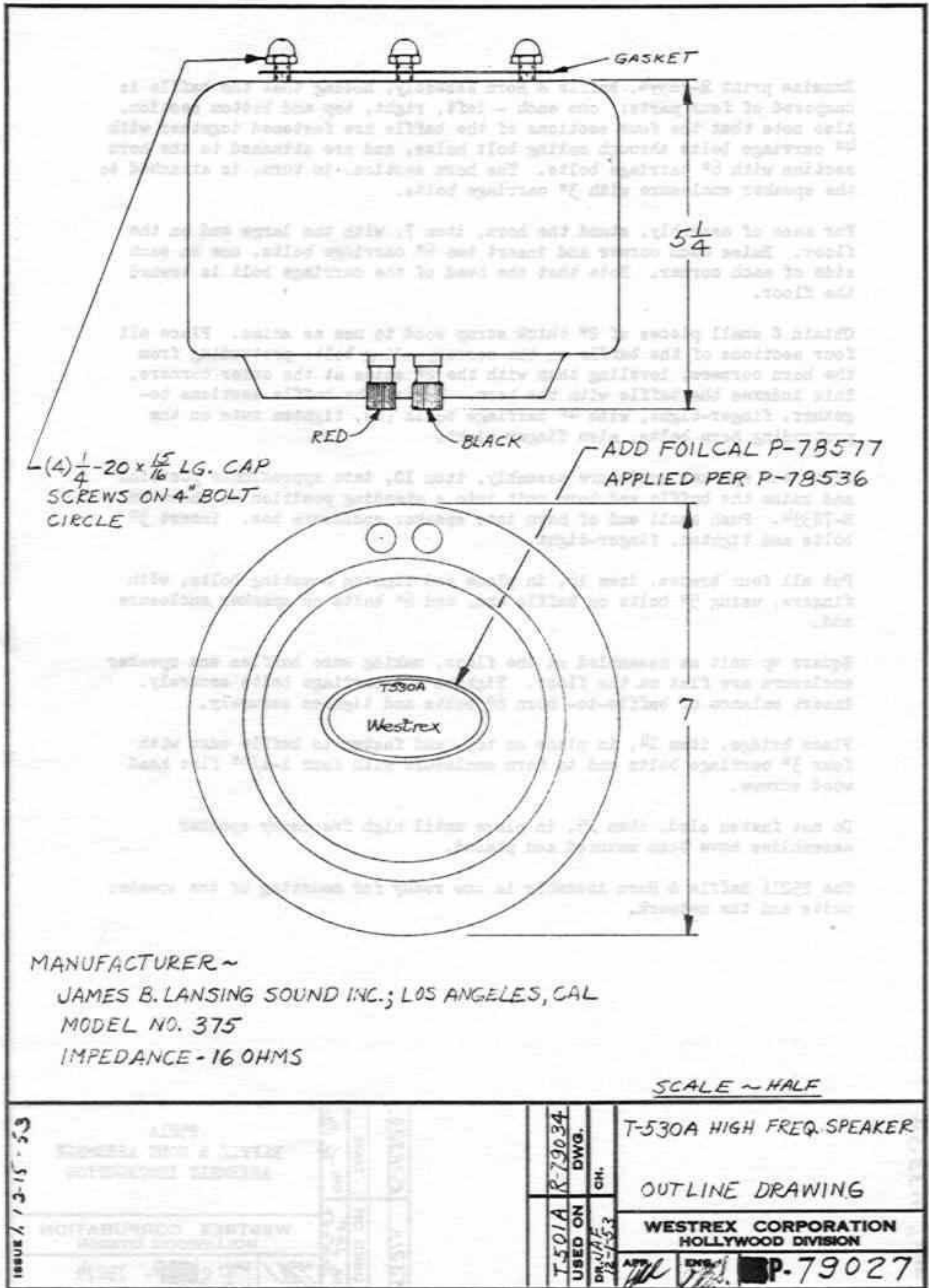
ADD FOILCAL P-78576@  
APPLIED PER P-78536

(4)  $\frac{9}{32}$  DIA. HOLES EQUALLY  
SPACED ON  $14\frac{9}{16}$  BOLT CIRCLE



MANUFACTURER -  
JAMES B. LANSING SOUND, INC., LOS ANGELES, CALIF.  
MODEL NO. 150-4W  
IMPEDANCE - 32 OHMS

ASSOCIATED DRAWINGS			
T-510A LOW FREQUENCY SPEAKER			
OUTLINE DRAWING			
WESTREX CORPORATION			
HOLLYWOOD DIVISION			
DRAWN BY VAF	CHECKED	ENG.	APP'D.
DATE 11-30-53		PPS.	W
SCALE: HALF	ASO-79026		





Examine print R-7839<sup>4</sup>, Baffle & Horn Assembly, noting that the baffle is composed of four parts: one each - left, right, top and bottom section. Also note that the four sections of the baffle are fastened together with 4" carriage bolts through mating bolt holes, and are attached to the horn section with 6" carriage bolts. The horn section, in turn, is attached to the speaker enclosure with 3" carriage bolts.

For ease of assembly, stand the horn, item 7, with the large end on the floor. Raise each corner and insert two 6" carriage bolts, one on each side of each corner. Note that the head of the carriage bolt is toward the floor.

Obtain 8 small pieces of 2" thick scrap wood to use as shims. Place all four sections of the baffle on the corresponding bolts protruding from the horn corners, leveling them with the 2" shims at the outer corners. This indexes the baffle with the horn. Fasten the baffle sections together, finger-tight, with 4" carriage bolts (8), tighten nuts on the protruding horn bolts, also finger-tight.

Bring the speaker enclosure assembly, item 10, into approximate position and raise the baffle and horn unit into a standing position as shown on R-7839<sup>4</sup>. Push small end of horn into speaker enclosure box. Insert 3" bolts and tighten, finger-tight.

Put all four braces, item 16, in place and tighten mounting bolts, with fingers, using 5" bolts on baffle end, and 6" bolts on speaker enclosure end.

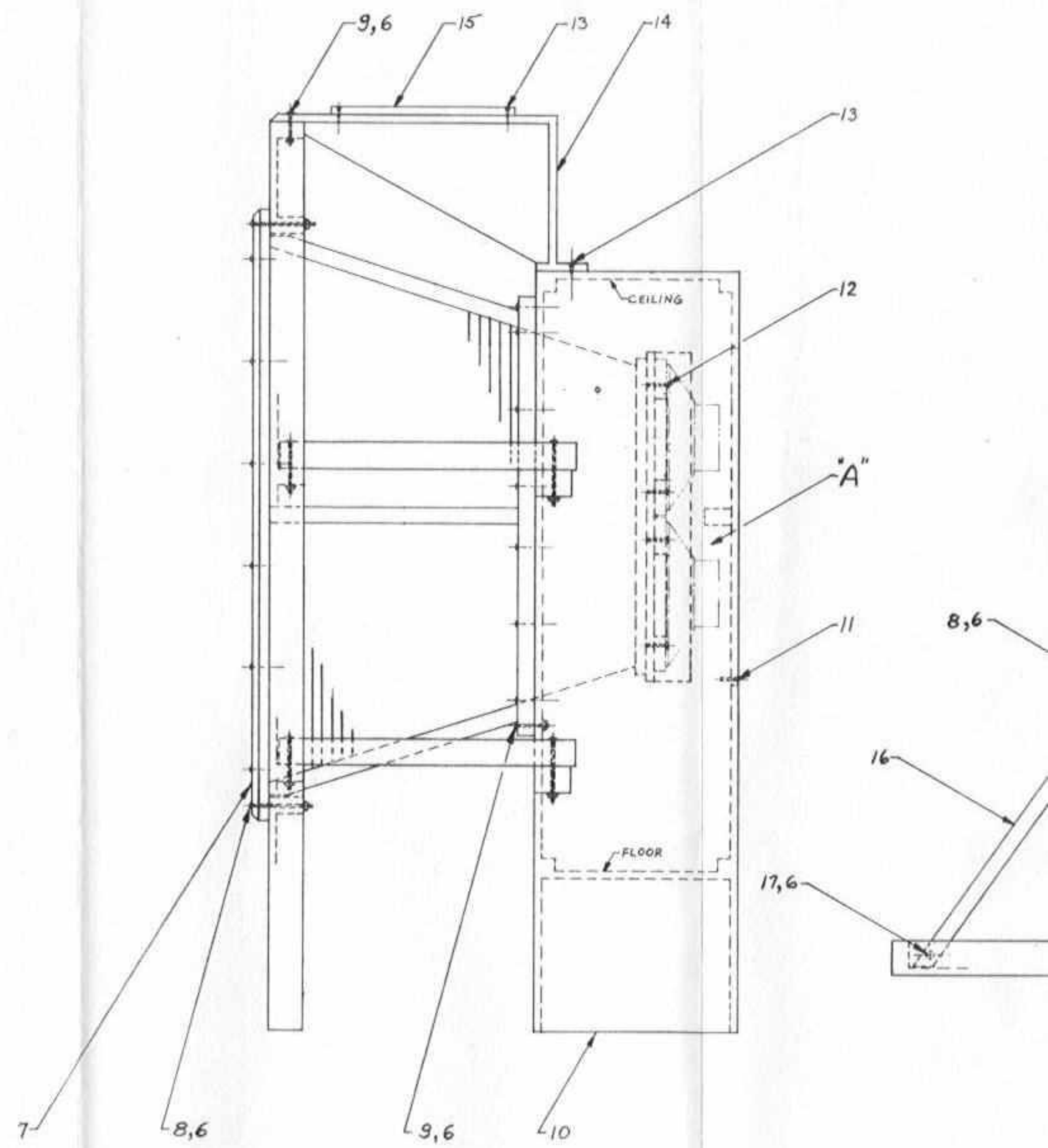
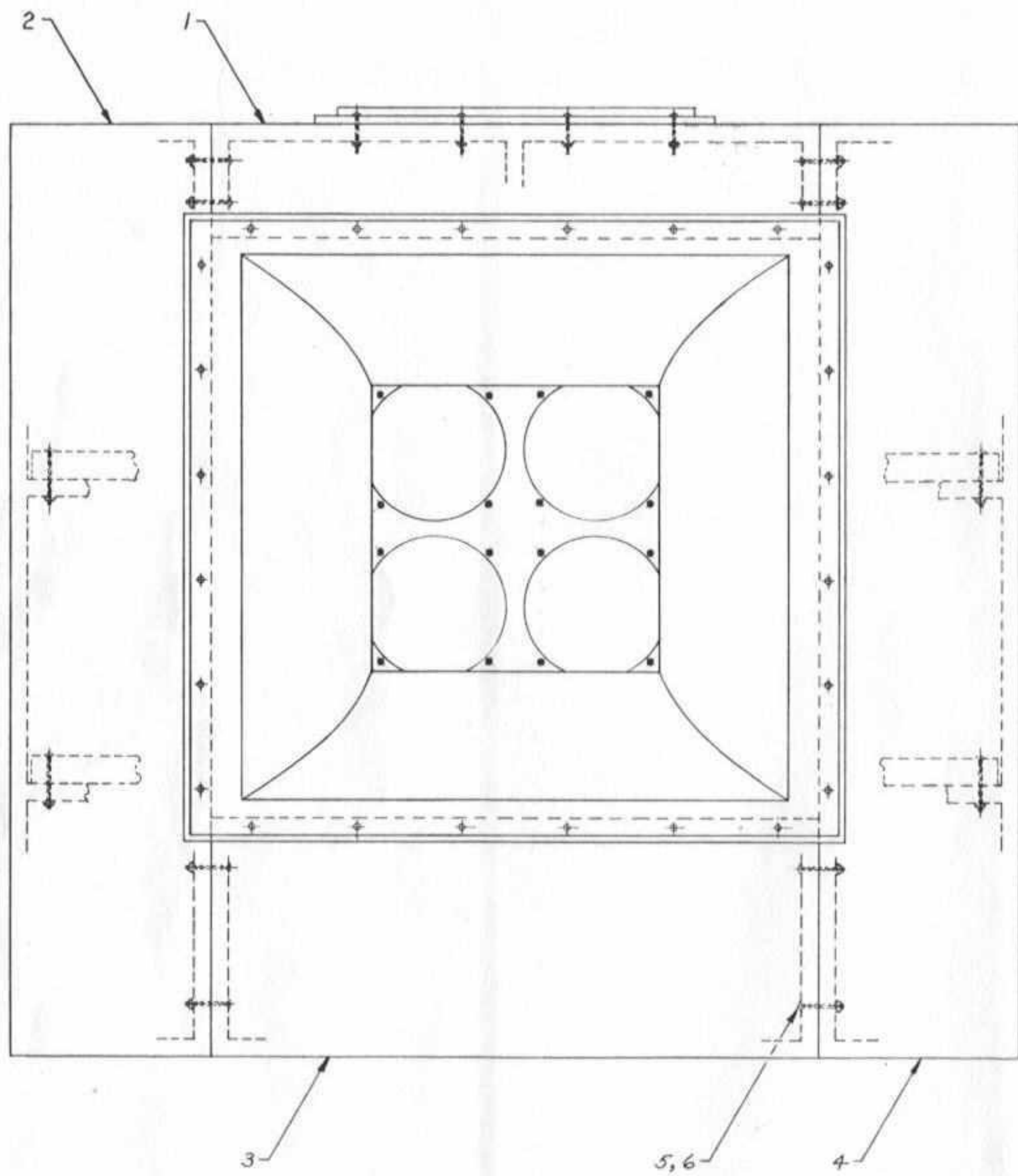
Square up unit as assembled on the floor, making sure baffles and speaker enclosure are flat on the floor. Tighten all carriage bolts securely. Insert balance of baffle-to-horn 6" bolts and tighten securely.

Place bridge, item 14, in place on top and fasten to beffle edge with four 3" carriage bolts and to horn enclosure with four 1-1/2" flat head wood screws.

Do not fasten sled, item 15, in place until high frequency speaker assemblies have been mounted and phased.

The T521A Baffle & Horn Assembly is now ready for mounting of the speaker units and the network.

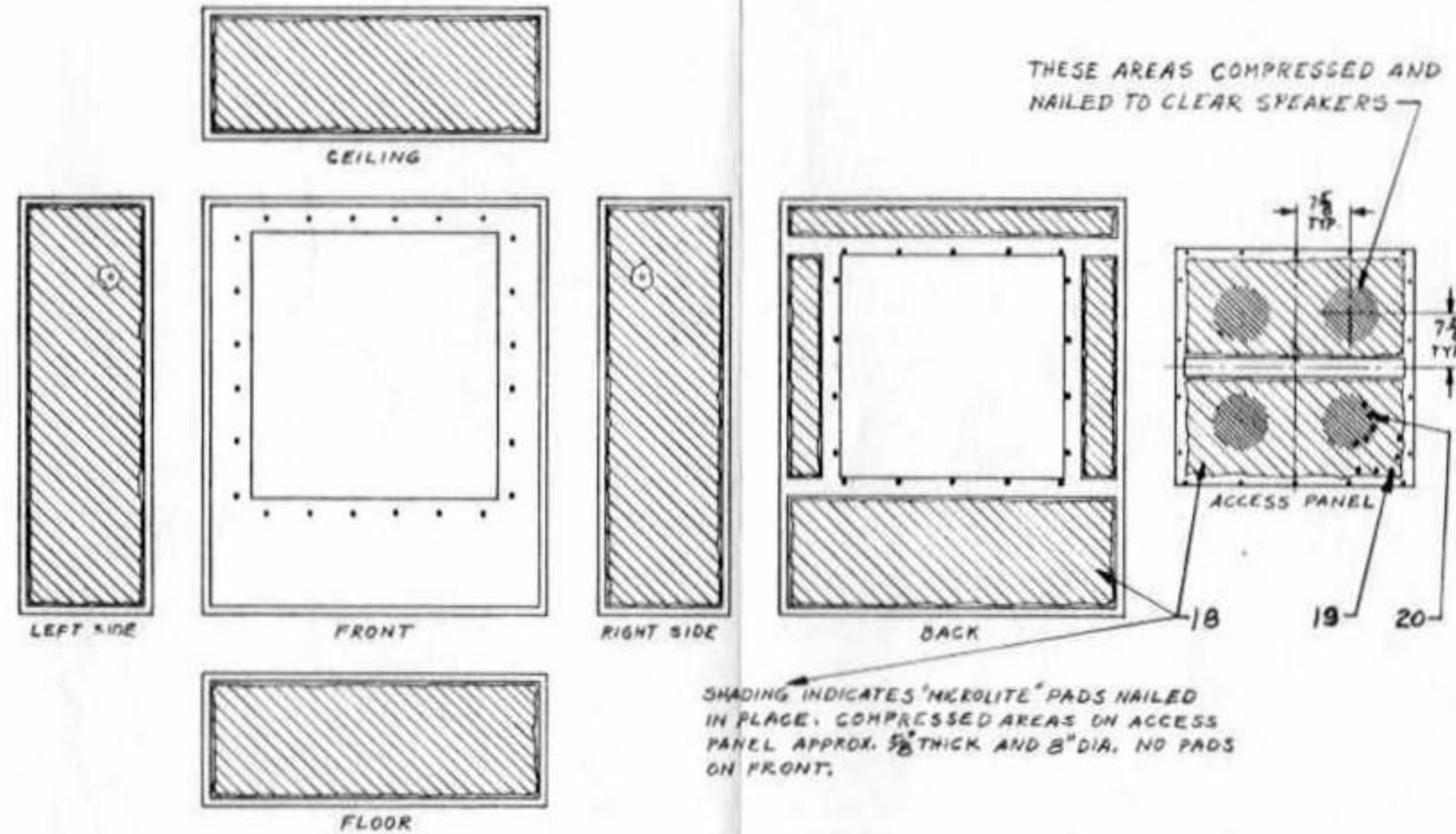
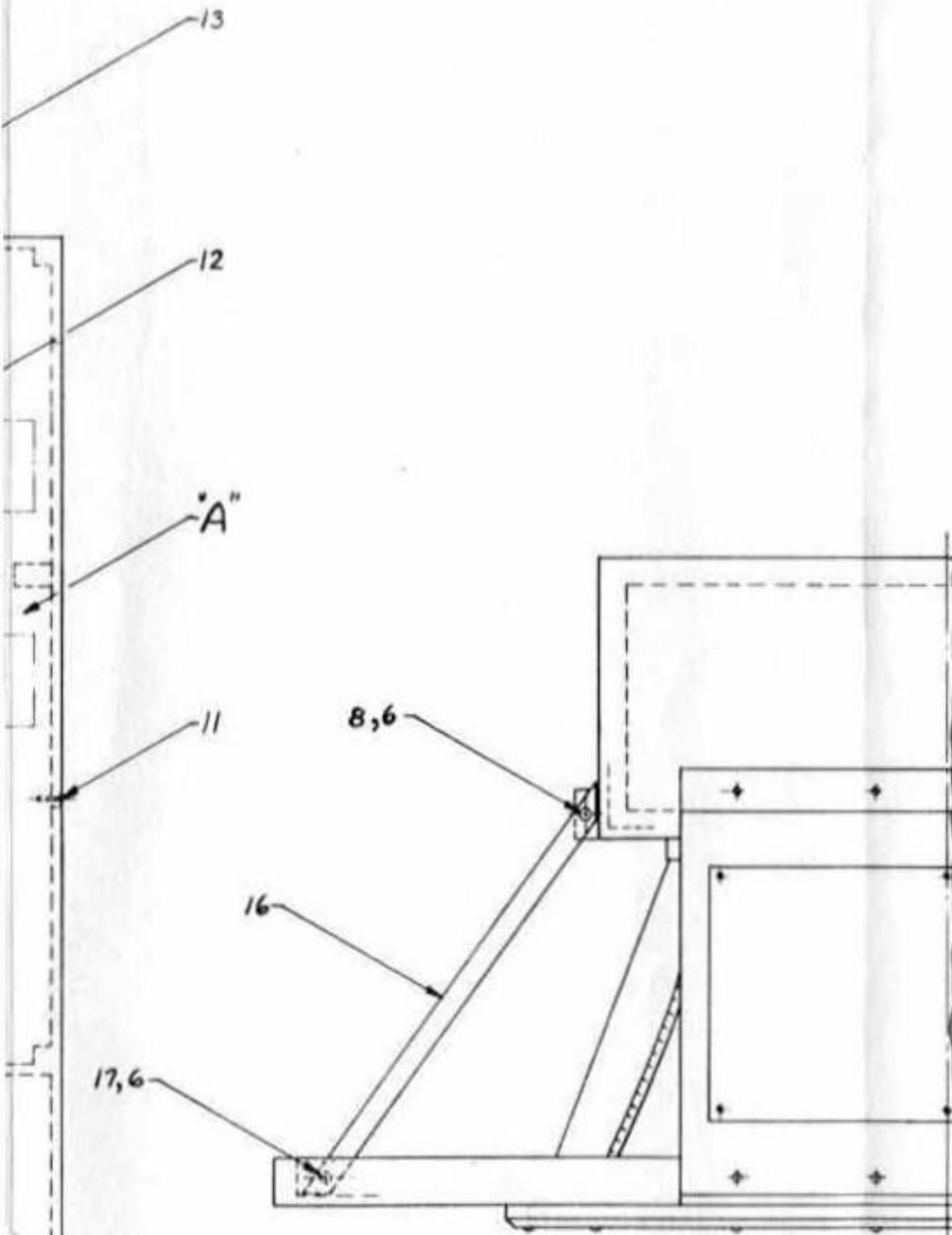
ISSUE 1, 3-30-54	R-7839 <sup>4</sup>	DWG.	CH. 4	T521A BAFFLE & HORN ASSEMBLY ASSEMBLY INSTRUCTION
	T521A	USED ON		WESTREX CORPORATION HOLLYWOOD DIVISION
			APP. [Signature]	ENGR. [Signature]
			P-79274	





NOTES~

1. MICROLITE GLASS FIBER INSULATING WOOL.  
SUPPLIER - GLASS FIBERS INC., 1810 MADISON AVE.,  
TOLEDO 2, OHIO, OR EQUIVALENT.
2. TO BE LOCATED AS REQUIRED AT TIME OF INSTALLATION.
3. ONE COPY OF ASSEMBLY INSTRUCTIONS ITEM 21 AND  
MAIN ASSEMBLY DRAWING ITEM 22 TO BE SUPPLIED  
IN MANILA ENVELOPE.



EXPLODED VIEW OF SPEAKER ENCLOSURE "A"

T 502 B	
T 502 A	
USED ON	DWS.

P-78274 ASSEMBLY INSTRUCTION  
P-79269 DRAWING LIST

ASSOCIATED DRAWINGS

T521A BAFFLE & HORN ASSEM.			
MAIN ASSEMBLY			
WESTREX CORPORATION HOLLYWOOD DIVISION			
DRAWN BY LERRARA DATE 3-25-54	CHECKED X/20	APPD J.P.S.	APPD [Signature]
SCALE: 1/8	ASR-78394		