

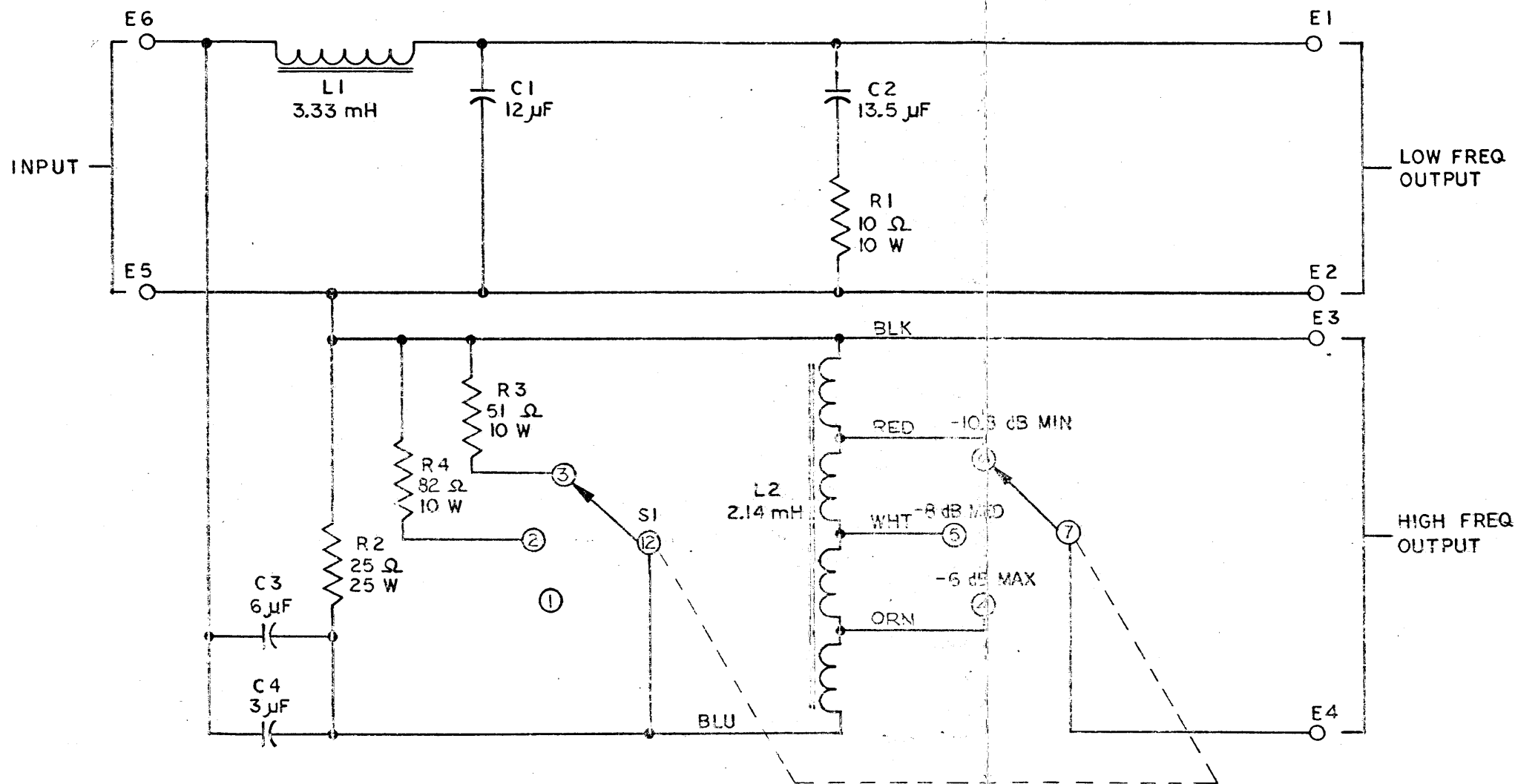
THESE DRAWINGS AND SPECIFICATIONS ARE THE PROPERTY OF JAMES B. LANSING SOUND INC. THEY ARE ISSUED IN STRICT CONFIDENCE AND SHALL NOT BE REPRODUCED, COPIED, OR USED AS THE BASIS FOR MANUFACTURE OR SALE OF APPARATUS WITHOUT WRITTEN PERMISSION.

REVISIONS

CHG	LTR	DESCRIPTION	DRFT	CHK	DATE	APPR
909B	C	REVISED & REDRAWN	eye	JS	21 MAR 78	JS
623D	D	REV RESISTOR @ R3 & 4	DRM	SM	6/17/60	JS

NOTICE

THE FOLLOWING DCR'S ARE OUTSTANDING AGAINST THIS DRAWING.



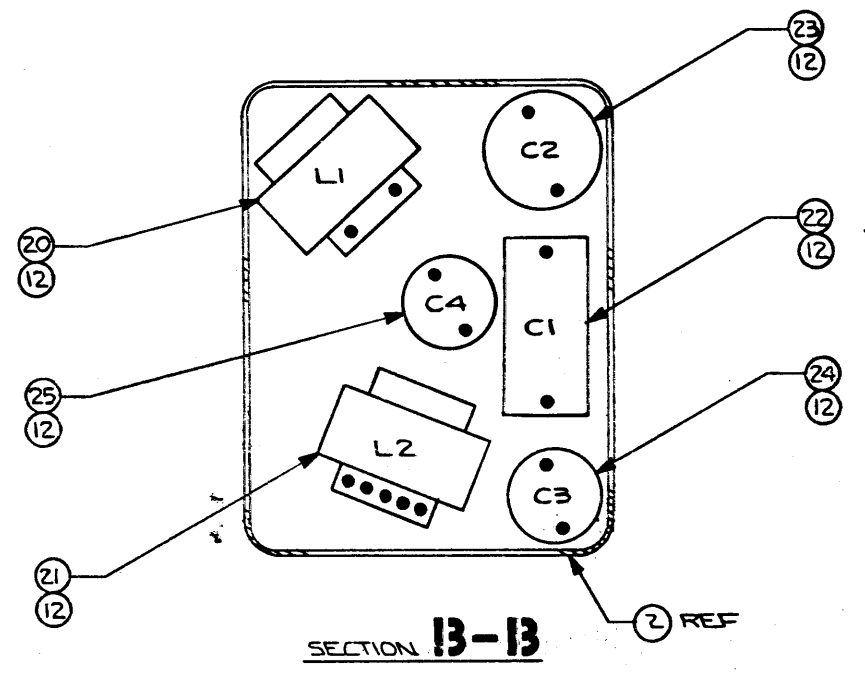
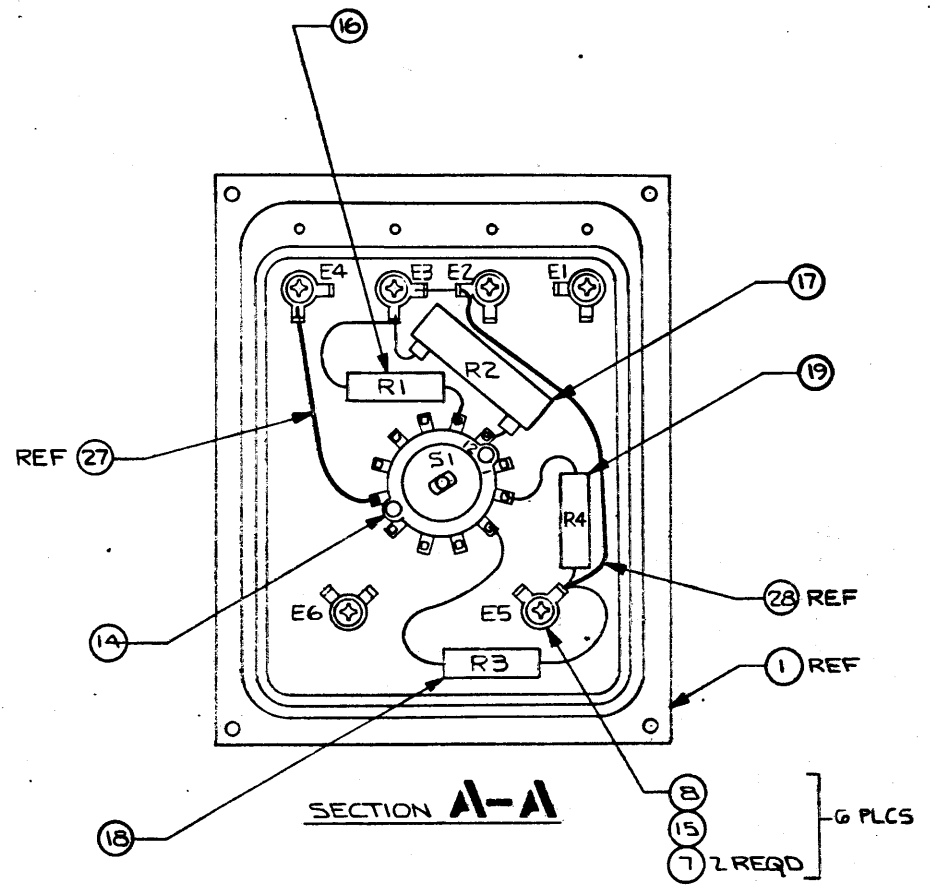
ITEM	PART NO.	DESCRIPTION	QTY	REMARKS
<b>BILL OF MATERIAL</b>				
UNLESS OTHERWISE SPECIFIED, DIMENSIONS ARE IN MILLIMETERS WITH INCHES IN BRACKETS. BREAK SHARP EDGES 0.4 mm (0.016 inch).		MATERIAL	DRAWN 17 MAR 78 <i>Paul Ventura</i>	
TOLERANCES (UNLESS OTHERWISE SPECIFIED)		FINISH	CHECKED 17 MAR 78 <i>Salvador Caniguera</i>	
DECIMALS			DESIGN	
X.XXX ± 0.13 (0.005 inch)			TITLE	
X.XX ± 0.25 (0.010 inch)			SCHEMATIC, LX13	
X.X ± 0.5 (0.020 inch)			ENGR 21 MAR 78 <i>Paul Ventura</i>	
FRACTIONAL U.S. DIMENSIONS = 1/32		MODELS USED ON	SIZE	DRAWING NO.
ALL DIMENSIONS ARE FINISHED DIMENSIONS		LX13	A2	12857
DO NOT SCALE DRAWING			SCALE	SHEET OF
				D

1. FOR WIRING DIAGRAM SEE DWG 12879.

NOTES: (UNLESS OTHERWISE SPECIFIED.)

12857

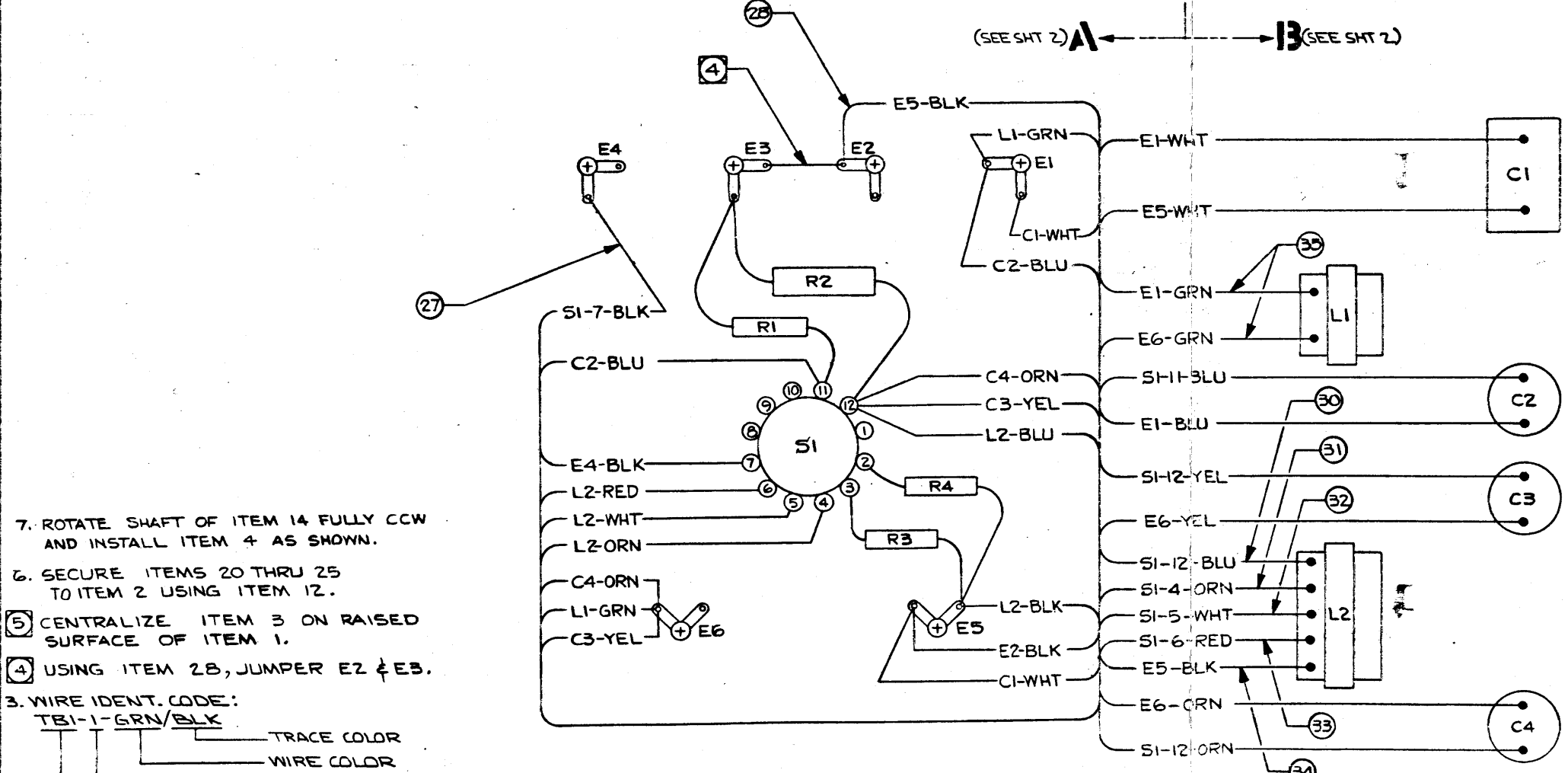
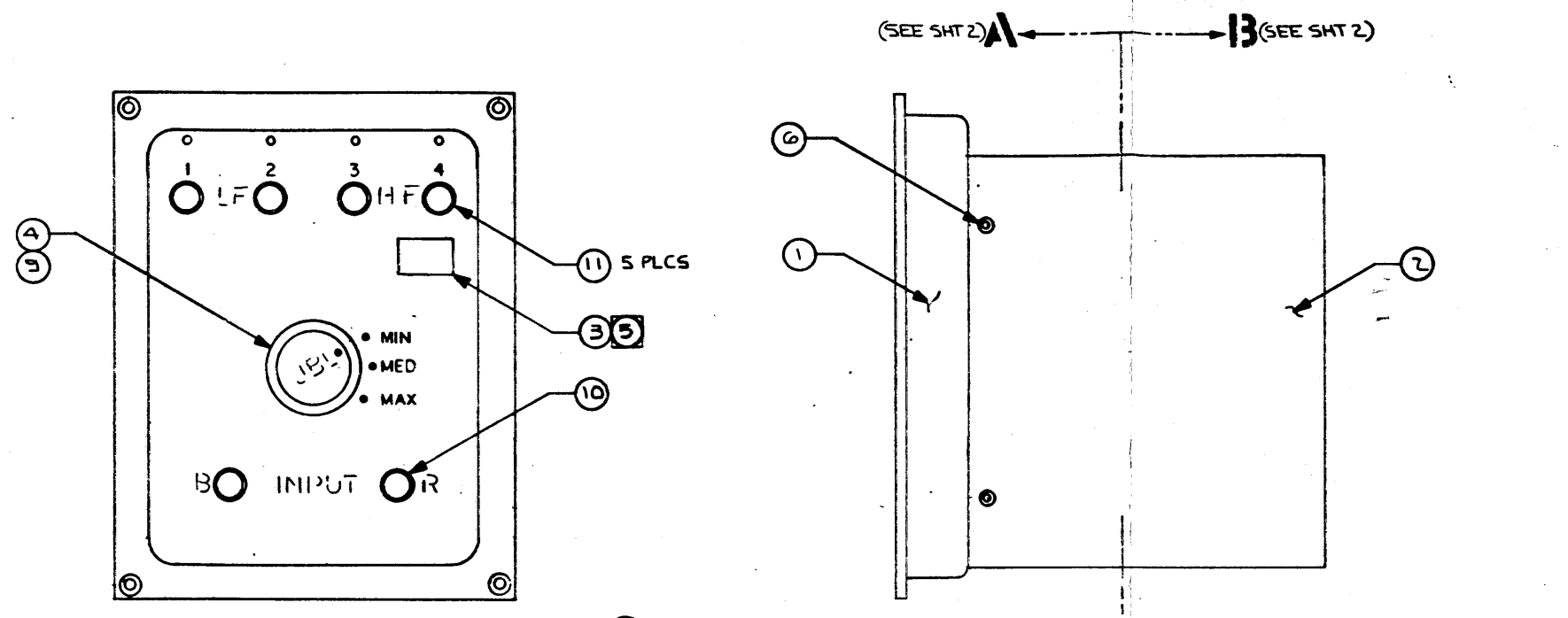
THESE DRAWINGS AND SPECIFICATIONS ARE THE PROPERTY OF JAMES B. LANSING SOUND INC. THEY ARE ISSUED IN STRICT CONFIDENCE AND SHALL NOT BE REPRODUCED, COPIED, OR USED IN THE SAME FOR MANUFACTURE OR SALE OF APPARATUS WITHOUT PERMISSION.



UNLESS OTHERWISE SPECIFIED DIMENSIONS ARE IN INCHES. BREAK SHARP EDGES .015		CHECKED: MAR 77		JBL JAMES B. LANSING SOUND 1001 Amphibious Blvd. (Calif. 90029)	
DECIMALS XX=01	FRACTIONS XXX=008	ANGULAR X/X=01.32	DESIGNER	SIZE D	DRAWING NUMBER 12879
TITL MFD ITEM WIRING DIAGRAM-LX13	MATERIAL	TREATMENT	ENGR	SCALE NONE	REV J
SEE SHIT	MACHINE FINISH V	APPL	SCALE NONE	WEIGHT	SHEET 2 OF 2
QTY MODEL NEXT DWG	DATE BY	APPLICATION	DO NOT SCALE DRAWING		

THESE DIMENSIONS AND SPECIFICATIONS ARE THE PROPERTY OF JAMES B. LANSING SOUND INC. THEY ARE ISSUED IN STRICT CONFIDENCE AND SHALL NOT BE REPRODUCED, COPIED, OR USED AS THE BASIS FOR MANUFACTURE OR SALE OF APPARATUS WITHOUT PERMISSION.

**NOTICE**  
THE FOLLOWING DCR'S ARE OUTSTANDING AGAINST THIS DRAWING.



7. ROTATE SHAFT OF ITEM 14 FULLY CCW AND INSTALL ITEM 4 AS SHOWN.
  6. SECURE ITEMS 20 THRU 25 TO ITEM 2 USING ITEM 12.
  5. CENTRALIZE ITEM 3 ON RAISED SURFACE OF ITEM 1.
  4. USING ITEM 28, JUMPER E2 & E3.
3. WIRE IDENT. CODE:  
TBI-1-GRN/BLK
- TRACE COLOR
  - WIRE COLOR
  - TERMINATION
  - DESTINATION

2. FOR ENGINEERING SPEC. SEE E D S 10044.  
1. FOR SCHEMATIC SEE DWG. 12857.  
NOTES: (UNLESS OTHERWISE SPECIFIED)

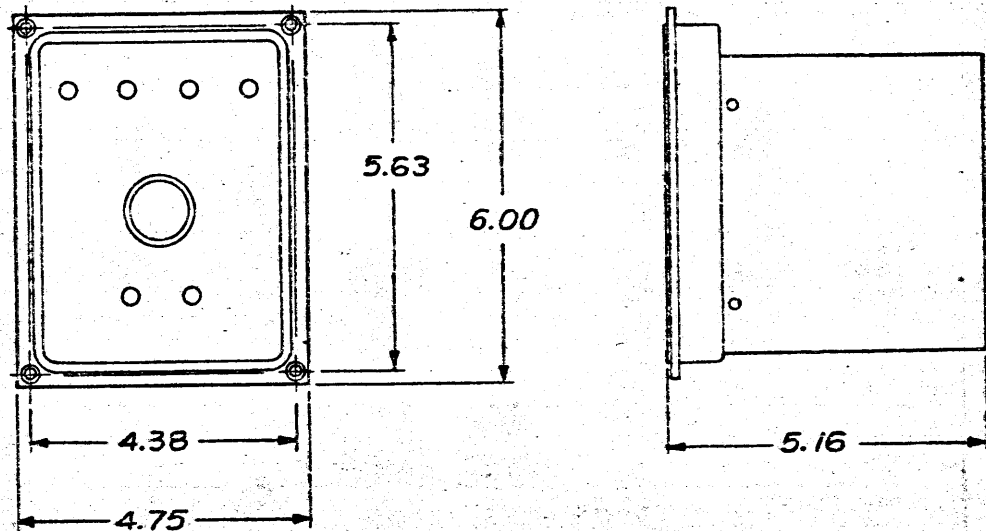
36				
35	10351\$	SLEEVING, NO. 14, GRN	2	7 IN. TOTAL
34	10325\$	NO. 14, BLK	1	
33	10326\$	NO. 12, RED	1	
32	10352\$	NO. 12, WHT	1	
31	10353\$	NO. 12, ORN	1	
30	10323\$	SLEEVING, NO. 14, BLU	1	7 IN. TOTAL
29				
28	56621	WIRE, 16 AWG, BLK, STRANDED	1	6 IN. TOTAL
27	11872	WIRE, 20 AWG, BLK, SOLID	1	3 1/2 IN TOTAL
26				
25	11937	CAPACITOR, 3 μF	1	C4
24	10296	CAPACITOR, 6 μF	1	C3
23	10359	CAPACITOR, 13.5 μF	1	C2
22	10434	CAPACITOR, 12 μF	1	C1
21	12883	INDUCTANCE COIL, 2.14 mH	1	L2
20	12882	INDUCTANCE COIL, 3.33 mH	1	L1
19	34753	RESISTOR, 82 Ω, 10 W	1	R4 35491
18	34752	RESISTOR, 51 Ω, 10 W	1	R3 35491
17	10368	RESISTOR, 25 Ω, 25 W	1	R2
16	34751	RESISTOR, 10 Ω, 10 W	1	R1 35491
15	10241	SOLDER LUG, Y-TYPE	6	E1 THRU E6
14	57559	SWITCH, ROTARY, 3 POSITION	1	S1
13				
12	50182\$	ADHESIVE, HOT MELT	AR	
11	10244	BINDING POST, BLACK	5	
10	10243	BINDING POST, RED	1	
9	12961	SET SCREW, 6-32 x 1/4	1	
8	10811	SCREW, 6-32 x 3/8, PN HD, PH	6	
7	10817	WASHER, INSULATING	12	
6	53672	RIVET	4	
5				
4	10293	KNOB	1	MRD4717B
3	13227	FOILCAL	1	
2	10357	NETWORK CONTAINER	1	MRD47171
1	10365	MOUNTING FLANGE	1	MRD47175
ITEM	PARTNUMBER	DESCRIPTION	QTY	REMARKS

BILL OF MATERIAL

UNLESS OTHERWISE SPECIFIED DIMENSIONS ARE IN INCHES.		DRAWN BY: [Signature]		JBL JAMES B. LANSING SOUND	
BREAK SHARP EDGES .015		CHECKED BY: [Signature]		TITLE: MFD ITEM/WIRING DIAGRAM-LX13	
DECIMALS	FRACTIONS	ANGULAR	DESIGN:	ENGR:	SIZE D
XX=01	XX=008	XX=32			
REV. 5 REDRAWN		LX13		DATE: [ ]	
QTY	MODEL	NEXT DWG	DATE	BY	APP: [ ]
11					
MACHINE FINISH V		DO NOT SCALE DRAWING		SCALE NONE	
WEIGHT X		INSET 1 of 2		REV J	

THESE DRAWINGS AND SPECIFICATIONS ARE THE PROPERTY OF JAMES B. LANSING SOUND INC. THEY ARE ISSUED IN STRICT CONFIDENCE AND SHALL NOT BE REPRODUCED, COPIED, OR USED AS THE BASIS FOR MANUFACTURE OR SALE OF APPARATUS WITHOUT PERMISSION.

**NOTICE**  
THE FOLLOWING  
DCR'S ARE  
OUTSTANDING  
AGAINST THIS  
DRAWING.



ITEM	PART NUMBER	DESCRIPTION	QTY	REMARKS
6	57329	CARTON	1	MRD 47303
5	12867	CARTON FILLER PAD	2	
4	10455	CARTON TUBE	1	
3	50766	WARRANTY STATEMENT	1	
2	55343	INSTALLATION KIT	1	MRD 55344
1	12879	MFD ITEM/ WIRING DIAGRAM - LX13	1	

SEE DRAWING 57479 FOR PACKING INSTRUCTIONS.

NOTES: (UNLESS OTHERWISE SPECIFIED)

REV	DATE	BY	DESCRIPTION
1			ITEM 1 WAS MFD ITEM
2			REVISED & REDRAWN

BILL OF MATERIAL

UNLESS OTHERWISE SPECIFIED DIMENSIONS ARE IN INCHES SHARP CORNERS - 0.015		DRAWN 4-6-77 R. K. HILL	SALES MODEL LX-13
DECIMALS XX.XX	FRACTIONS X/X=1/32	CHECK 4-28-77 R. K. HILL	TITLE
TREATMENT	ANGULAR	DESIGN	SIZE C
DATE 1-81	BY	SCALE NONE	WEIGHT
APPROVAL	DATE 1-81	DO NOT SCALE DRAWING	DRAWING NUMBER 12880
			REV G
			SHEET 1 of 1