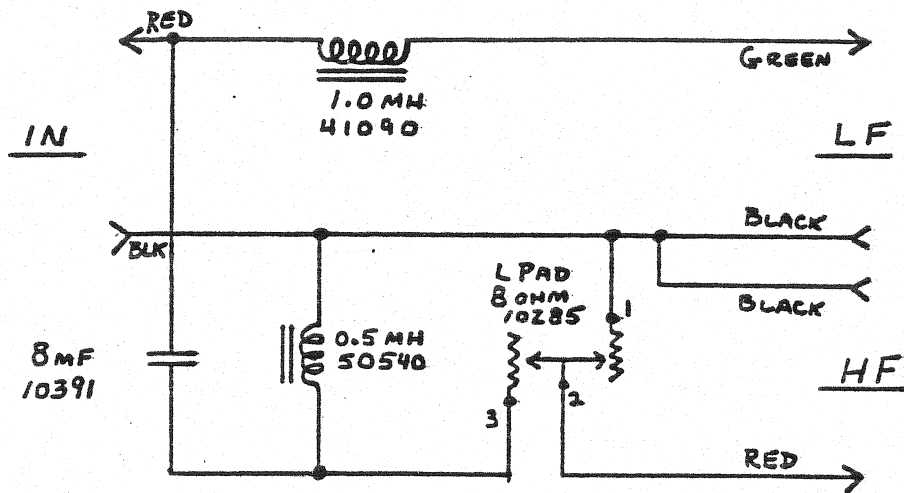


SPECIFICATIONS: NOTE ①

| LOAD Z | LOW PASS | CROSS OVER | HIGH PASS | ATTENUATION |
|--------|-------------------------|--------------------------|-------------------------|-------------|
| 8 | 100HZ LF -2 | | | |
| | 1KHZ LF -4 HF -17 | 1.7KHZ LF -7 HF -7 | 5KHZ LF -14 HF -1 | 5KHZ VAR |

CIRCUIT:

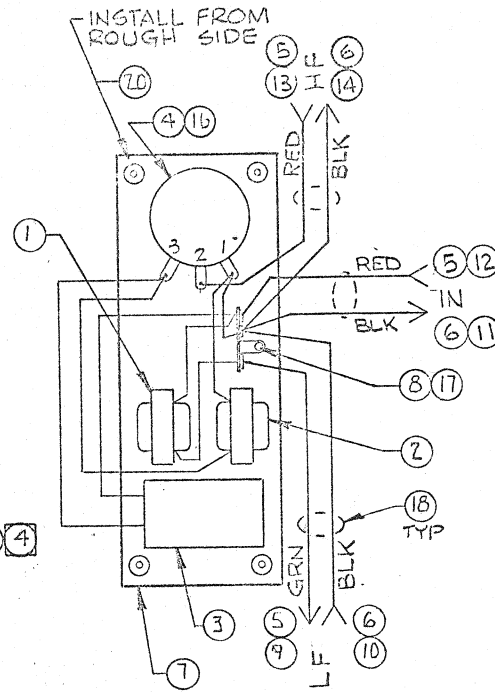
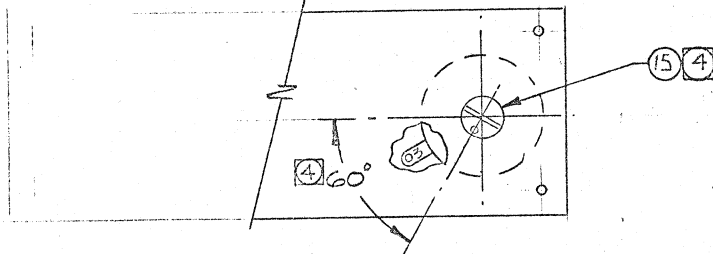
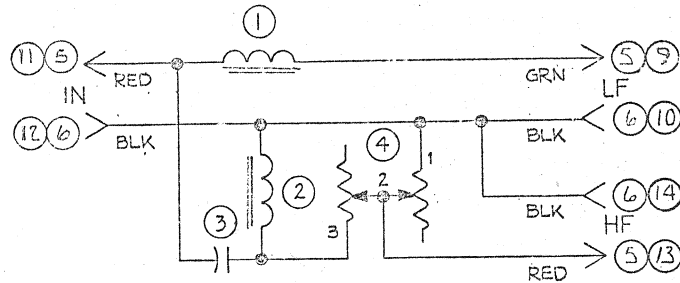


NOTES:

- ① USE STANDARD TEST FIXTURE
- ② N26 GILDED & STAPLED TO BAFFLE BOARD
N26-A ATTACHED WITH SCREWS

| | | |
|-------|---|-------|
| N26-A | F | 12-75 |
| N26 | K | 12-75 |

THESE DRAWINGS AND SPECIFICATIONS ARE THE PROPERTY OF JAMES B. LANSING SOUND INC. THEY ARE ISSUED IN STRICT CONFIDENCE AND SHALL NOT BE REPRODUCED, COPIED, OR USED AS THE BASIS FOR MANUFACTURE OR SALE OF APPARATUS WITHOUT PERMISSION.



| ITEM | P/N | DESC | QTY |
|------|--------|-----------------------------|-----|
| 1 | 41090 | INDUCTOR, 1,0 MH | 1 |
| 2 | 50540 | INDUCTOR, 0,5 MH | 1 |
| 3 | 10391 | CAP, 8 UFD | 1 |
| 4 | 10285 | L-PAD, 8 Ω | 1 |
| 5 | 50473 | TERMINAL, MALE | 3 |
| 6 | 50289 | TERMINAL, FEMALE | 3 |
| 7 | 54792 | MTG BD MRD 50291 | 1 |
| 8 | 82862 | TERML STRIP | 1 |
| 9 | 37883 | WIRE, GRN, 12 MRD 37051 | 1 |
| 10 | 37623 | " BLK, 12 " 37055 | 1 |
| 11 | 37956 | " RED, 16 " 37050 | 1 |
| 12 | 37631 | " BLK, 16 " 37055 | 1 |
| 13 | 37936 | " RED, 8 " 37050 | 1 |
| 14 | 37611 | " BLK, 8 " 37055 | 1 |
| 15 | 52192 | KNOB MRD 52191 | 1 |
| 16 | 12306 | LOCKWASHER | 1 |
| 17 | 53673 | PDP RIVET | 1 |
| 18 | 353535 | CABLE TIE | 3 |
| 19 | 52014 | SCREW, 8-32 X 1/4 L FH, BLK | 4 |
| 20 | 51204 | RIVET, TH'D, 8-32 BLK | 4 |

- 5 LOOSE ITEM, PACKED IN 11710'S BAG.
- 4 KNOB (ITEM 15) TO BE INSTALLED AS SHOWN WHEN SHAFT OF ITEM 4 IS ROTATED TO A FULL 'CCW' POSITION. TOP OF KNOB TO PROTRUDE 25/32 ABOVE SURFACE OF MOUNTING BOARD, (ITEM 7).
- 3. REFER TO TEST SPECS # 51520 REF.
- 2. ITEMS 1, 2 & 3 BONDED TO ITEM 7 WITH 501825 ADHESIVE (HOT MELT).
- 1. APPROVED ENG'R SAMPLE. CURRENT REV. MAINTAINED IN ENG'R DEPT.

| | | | | | | | | | | | |
|---|--|--|--|---|--|--|--|------------------------------|--|----------------------------------|--|
| REVISIONS | | | | UNLESS OTHERWISE SPECIFIED DIMENSIONS ARE IN INCHES. BREAK SHARP EDGES .015 | | | | DRAWN: 11-12-74 RSHEPHERD | | JBL JAMES B. LANSING SOUND, INC. | |
| 125A C 52014 (WAS 41134 PER E.C.O.) DR 5/67 R37 | | | | DECIMALS .XX ± .01 FRACTIONS XX/XX ± .005 ANGULAR XX ± 1/32 ± | | | | CHECK: 11-13-74 | | TITLE: MFD ITEM/SLS MDL, N26-A | |
| 2389 B REV FOR E.O. | | | | TIR MATERIAL: | | | | DESIGN: | | SIZE B | |
| 3257 A REL FOR PROT | | | | TREATMENT: | | | | ENGR: | | MFD ITEM/SLS MDL | |
| ECN LET. CHANGE DATE BY APPLICATION | | | | MACHINE FINISH: V | | | | APPR: 11/15/74 | | DRAWING NUMBER 54789 | |
| | | | | DO NOT SCALE DRAWING | | | | SCALE: — | | SHEET 1 OF 1 | |