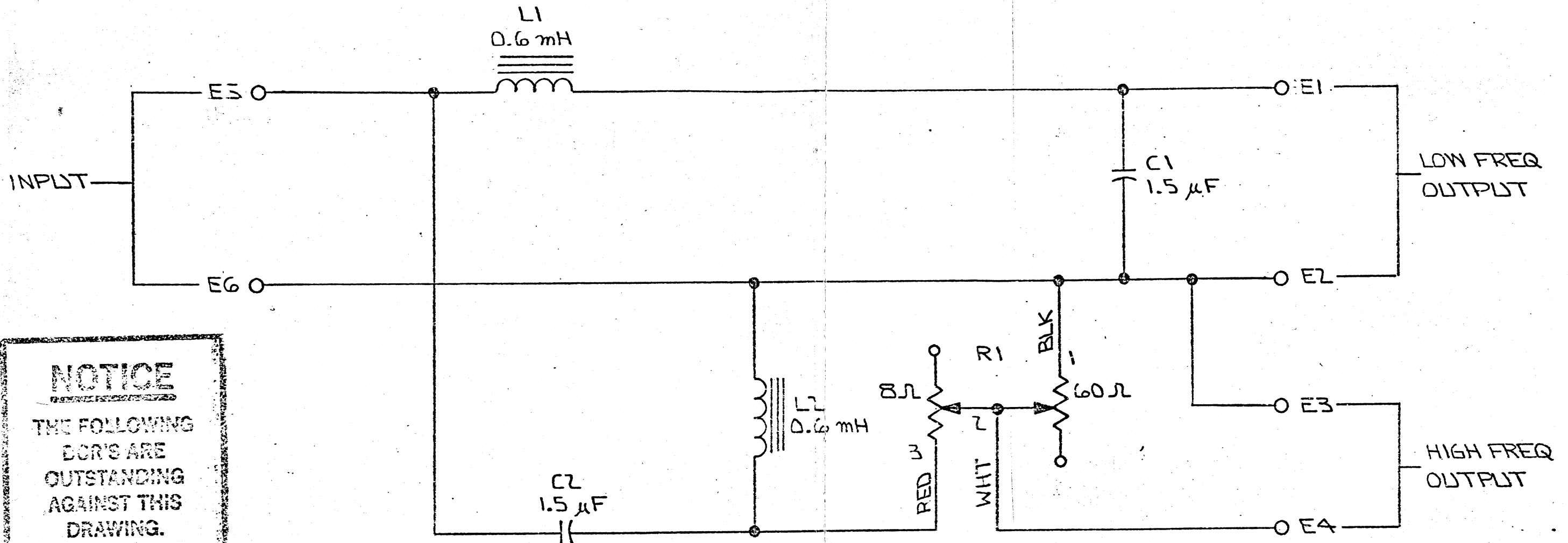


THESE DRAWINGS AND SPECIFICATIONS ARE THE PROPERTY OF JAMES B. LANSING SOUND INC. THEY ARE ISSUED IN STRICT CONFIDENCE AND SHALL NOT BE REPRODUCED, COPIED, OR USED AS THE BASIS FOR MANUFACTURE OR SALE OF APPARATUS WITHOUT PERMISSION.



NOTICE
THE FOLLOWING
COR'S ARE
OUTSTANDING
AGAINST THIS
DRAWING.

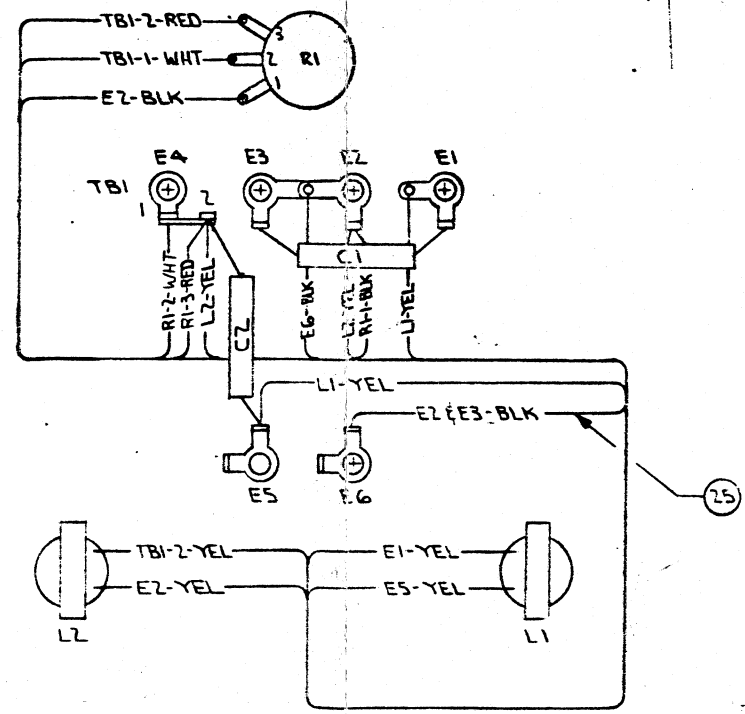
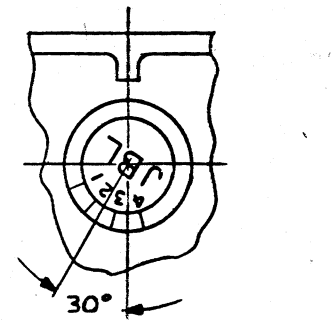
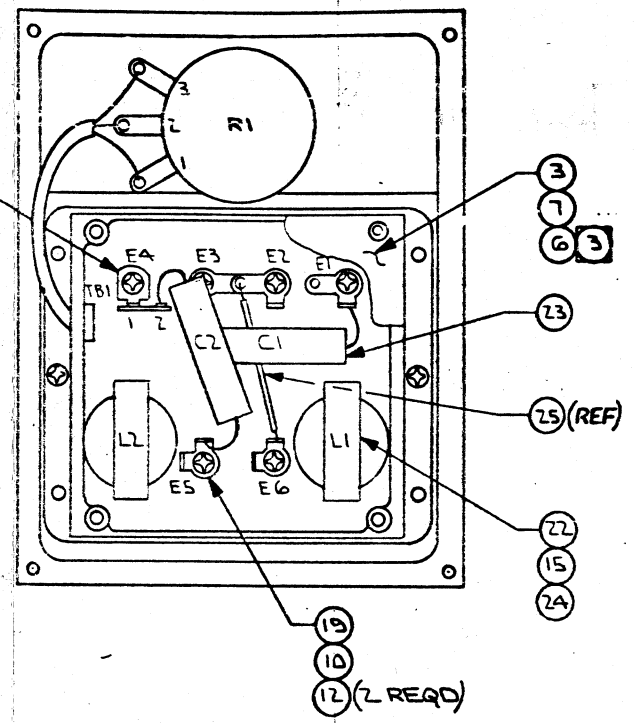
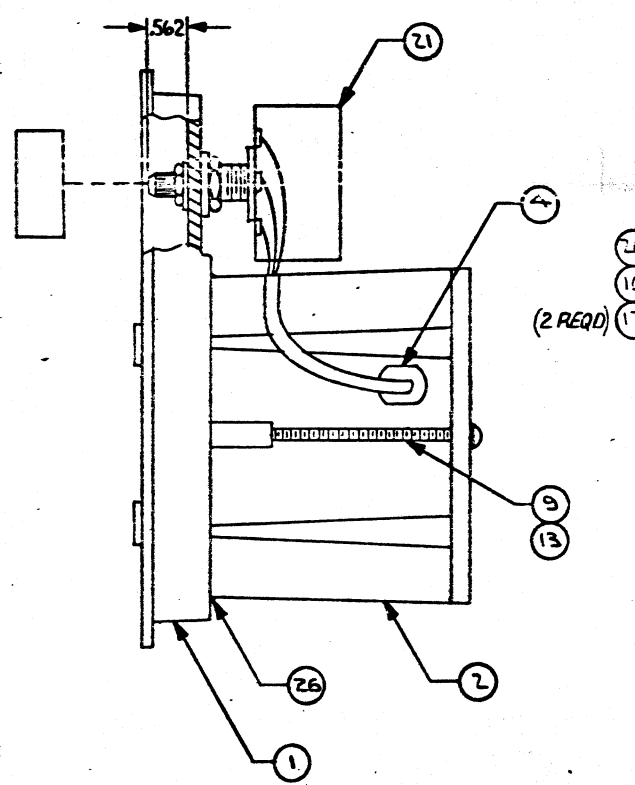
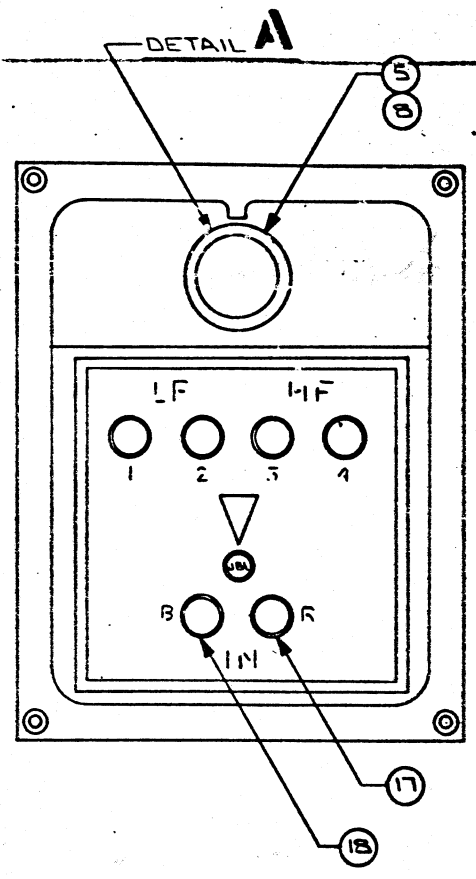
FILE COPY

1. FOR WIRING DIAGRAM SEE DWG. 10463.
NOTES: UNLESS OTHERWISE SPECIFIED

REVISIONS				UNLESS OTHERWISE SPECIFIED DIMENSIONS ARE IN INCHES. BREAK SHARP EDGES .015				DRAWN: 6/31/77 S. Hallman		TITLE: SCHEMATIC-N7000	
				DECIMALS .XX ± .01		FRACTIONS X/Y ± 1/32		CHECK: 18, Nov. '77 Belmont Conington		DESIGN:	
				MATERIAL:		ENGR: 12-1-77		SIZE: B		DRAWING NUMBER: 11134	
				TREATMENT:		APPR: 3 DEC. 1977		SCALE: X		WEIGHT: X	
				MACHINE FINISH: V		DO NOT SCALE DRAWING		SHEET: 1		OF: 1	
5520	C	WHT LEAD WAS GRN	ALY DAM	2/4/79	466	N7000					
6968	B	REV & REDRAWN	CP	12-1-77							
ECN	LET.	CHANGE	DATE	BY	QTY	MODEL	NEXT DWG	APPLICATION			

THESE DRAWINGS AND SPECIFICATIONS ARE THE PROPERTY OF JAMES R. HANSON SOUND INC. THEY ARE ISSUED IN STRICT CONFIDENCE AND SHALL NOT BE REPRODUCED, COPIED, OR USED AS THE BASIS FOR MANUFACTURE OR SALE OF APPARATUS WITHOUT PERMISSION.

NOTICE
THE FOLLOWING DCR'S ARE OUTSTANDING AGAINST THIS DRAWING.



- 8. COMBINE ITEMS 26, 27, & 28 PER EDS 1004.
 - 7. KNOB TO BE INSTALLED IN POSITION SHOWN WHEN POT IS IN A FULL COUNTER-CLOCKWISE POSITION.
 - 6. ITEM 19 IS USED WITH E1, E2, E3, E5, E6.
 - 5. WIRE IDENT. CODE:
TBI-1-GRN/BLK
TRACE COLOR
WIRE COLOR
TERMINATION
DESTINATION
 - 4. ASSEMBLE ITEM 2 TO ITEM 1 & SEAL UNIT ALL AROUND WITH ITEM 14.
 - 3. CENTRALLY LOCATE ITEM 6 ON ITEM 3, FOILCAL TO READ RIGHT WHEN POT IS DIRECTLY ABOVE IT.
 - 2. FOR ENGINEERING SPEC SEE E.S.T. 1025
 - 1. FOR SCHEMATIC SEE DWG NO. 11134.
- NOTES: UNLESS OTHERWISE SPECIFIED

ITEM	PART NUMBER	DESCRIPTION	QTY	REMARKS
28	474175	POWDER, ADDITIVE	A/R	
27	294545	DYE, DYKEM BLUE STEEL	A/R	
26	293685	ADHESIVE	A/R	EDS 1002
25	10298	WIRE, 20 AWG, BLK, 2 1/2	1	
24	103245	SLEEVING, NO. 14, YEL	A/R	
23	10460	CAPACITOR, 1.5 μF	2	C1, C2
22	13222	INDUCTANCE COIL, 0.6 mH	2	L1, L2
21	13359	L-PAD ASSY	1	R1
20	10212	TERMINAL STRIP, 2 TERM.	1	TBI
19	10241	SOLDER LUG, Y-TYPE	5	
18	10244	BINDING POST, BLK	5	E1, E2, E3, E4, E6
17	10243	BINDING POST, RED	1	E5
16				
15	61961	ADHESIVE	A/R	
14				
13	10280	WASHER, LOCK, NO. 6, INTERNAL	2	
12	10817	WASHER, NO. 6, INSULATING	12	
11				
10	10811	SCREW, 6-32 X 3/8, PH HD PHIL	6	
9	10281	SCREW, 6-32 X 2 1/4, RD HD PHIL	2	
8	12961	SCREW, SET, 6-32 X 1/4, SOC HD	1	
7	53613	RIVET	4	
6	57415	FOILCAL	1	MRD 57402
5	10330	KNOB	1	MRD 47074
4	12274	STRAIN RELIEF	1	
3	10302	BOTTOM LID	1	
2	10316	NETWORK CONTAINER	1	MRD 47077
1	50403	MOUNTING PLATE	1	MRD 47068

BILL OF MATERIAL

UNLESS OTHERWISE SPECIFIED DIMENSIONS ARE IN INCHES. BREAK SHARP EDGES .015		DRAWN: JAMES R. HANSON SOUND INC.	
DECIMALS XX.XX.XX	FRACTIONS X/X	ANGULAR X° X' X"	CHECK: [Signature]
MATERIAL: [Blank]		DESIGN: [Blank]	
TREATMENT: [Blank]		ENGR: [Blank]	
MACHINE FINISH: [Blank]		APP: [Blank]	
DATE: [Blank]	BY: [Blank]	SCALE: FULL	WEIGHT: [Blank]
DO NOT SCALE DRAWING		SHEET 1 OF 1	