

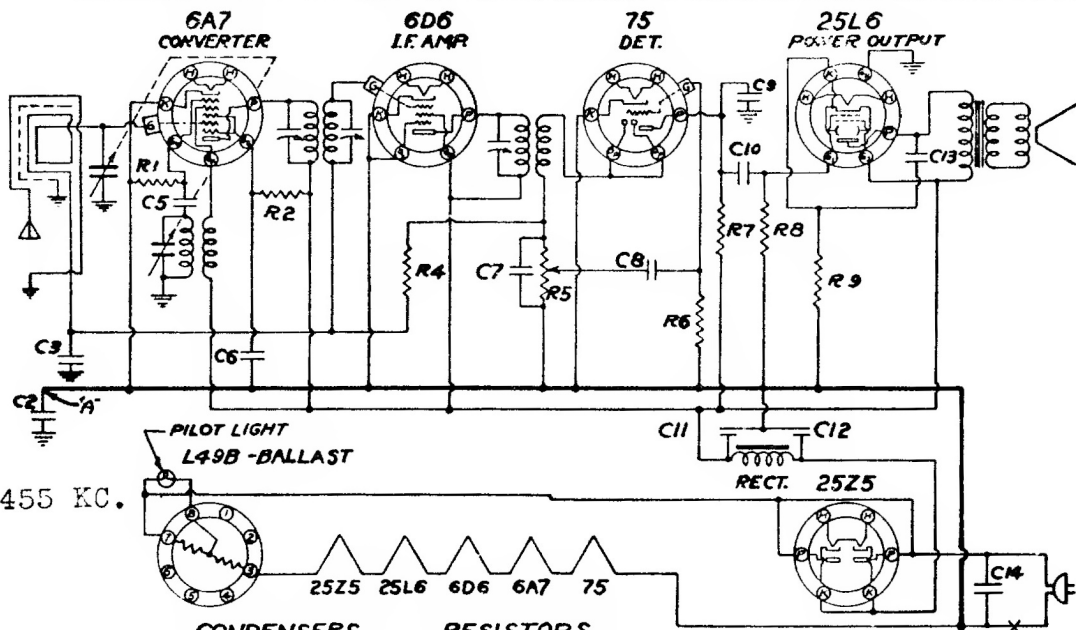
Admiral

I.F. ALIGNMENT

Remove the receiver chassis from the cabinet and connect a 100,000 ohm resistor to the green and yellow leads in place of the loop antenna to which they were originally connected. Adjust the signal generator to 455 KC and connect the output to the grid of the first detector tube (1A7) through a .05 or .1 mfd. condenser. The ground on the signal generator should be connected to the chassis ground. Align all I.F. trimmers to peak or maximum reading on the output meter.

Admiral Radio

Model 4D



CONDENSERS

N ^o	MFD.	VOLTS
C2	.25	200
C3	.02	400
C5	.00005	MICA
C6	.05	400
C7	.00025	MICA
C8	.01	400
C9	.00025	MICA
C10	.01	400
C11	20.	150
C12	20.	
C13	.005	600
C14	.05	400

RESISTORS

N ^o	OHMS	WATTS
R1	50,000	1/2
R2	30,000	1/2
R4	2,000,000	1/2
R5	500,000	VOL CONT
R6	500,000	1/2
R7	250,000	1/2
R8	500,000	1/2
R9	150	1/2 ±10%

↓ IND. CHASSIS GND.

Admiral Radio

SCHEMATIC DIAGRAM
MODEL 5LL
MODEL 5L

NOTE: C2 USED ON MODEL 5LL ONLY.
ON MODEL 5L POINT A' IS CONNECTED TO CHASSIS