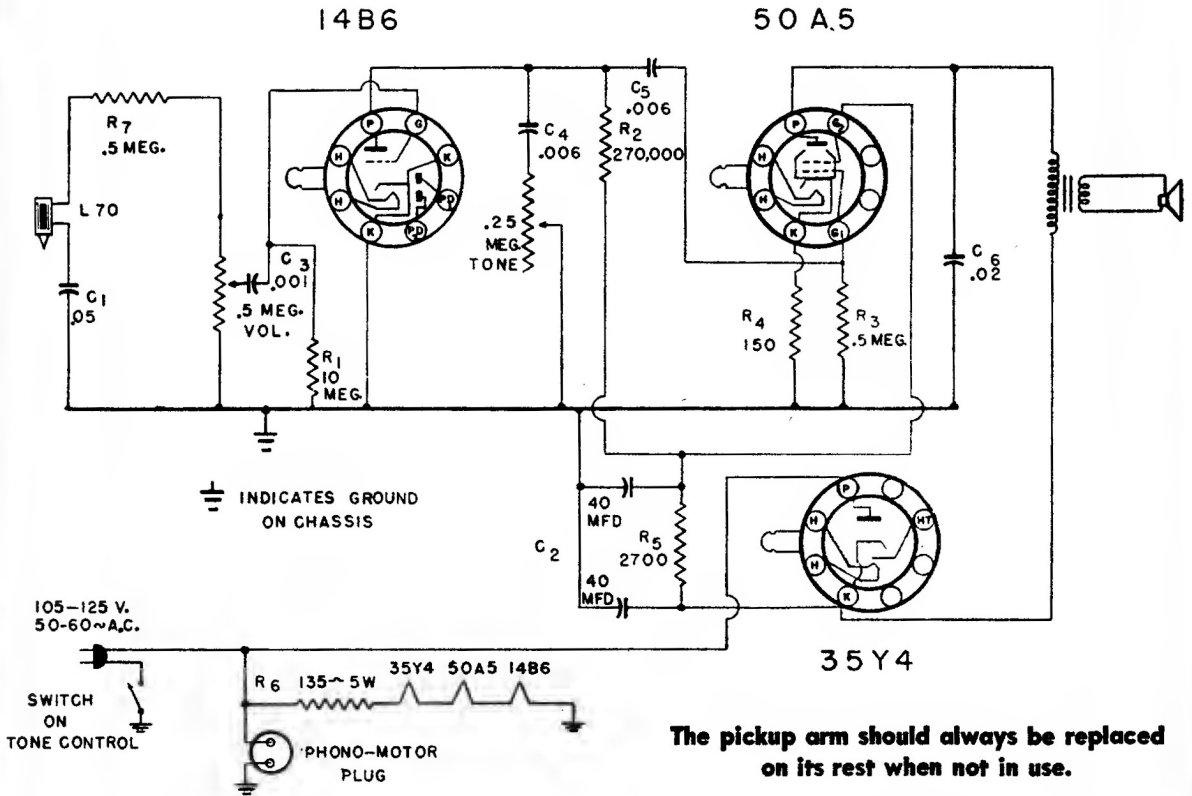


AIR KING Model 4625

3-Tube Amplified Phonograph



NOISY RECORDS: A background of noise and scratching indicates worn records. Poor tone may be evidence of a worn needle. Some records will wear longer than others, even if kept equally clean. This is due to quality of manufacture, care given the records, and to the kind of music recorded.

CAUTION: The lead wire which emerges from the rear of the tone arm and goes through the motor board is arranged so that it will not restrict the free movement of the tone arm across the record. It is important that this wire be free and loose at all times. Do not attempt to push the excess wire through the panel. Remove clip from stem before placing records on turntable.

PARTS LIST

Schematic Location	Part No.	Description	Schematic Location	Part No.	Description
	T454	Cabinet		18111	Plug, speaker, female
	62180	Cover, back		18112	Plug, motor, male
C4, C5	1971	Condenser, .006 mfd, mica		18113	Plug, motor, female
C1	1967	Condenser, .05 mfd, 200V		18104	Plug, phono, female
C2	2065	Condenser, electrolytic, 40-40 mfd, 150V		1861	Plug, phono, male
C3	1956	Condenser, .001 mfd	R6	2238	Resistor, 135 ohms, 5W, wire wound
C6	1963	Condenser, .02 mfd, 400V	R5	2378	Resistor, 2700 ohms, 1W
	2473	Control, Tone, with switch, 1/4 Meg.	R2	2361	Resistor, 278,000 ohms, 1/2W
	2472	Control, Volume, 1/2 Meg.	R4	2372	Resistor, 150 ohms, 1/2W
	5559	Cord, line	R3, R7	2353	Resistor, 500,000 ohms, 1/4W
	39145	Knob (2)	R1	2335	Resistor, 10 Meg., 1/4W
	6414	Motor	R8	2363	Resistor, 220,000 ohms, 1/4W
	6342	Pick-up arm with cartridge, L78		5855	Speaker, 5", with output trans.
	18103	Plug, speaker, male		6417	Turntable, 9"
				54228	Needle, Fidelity Master