

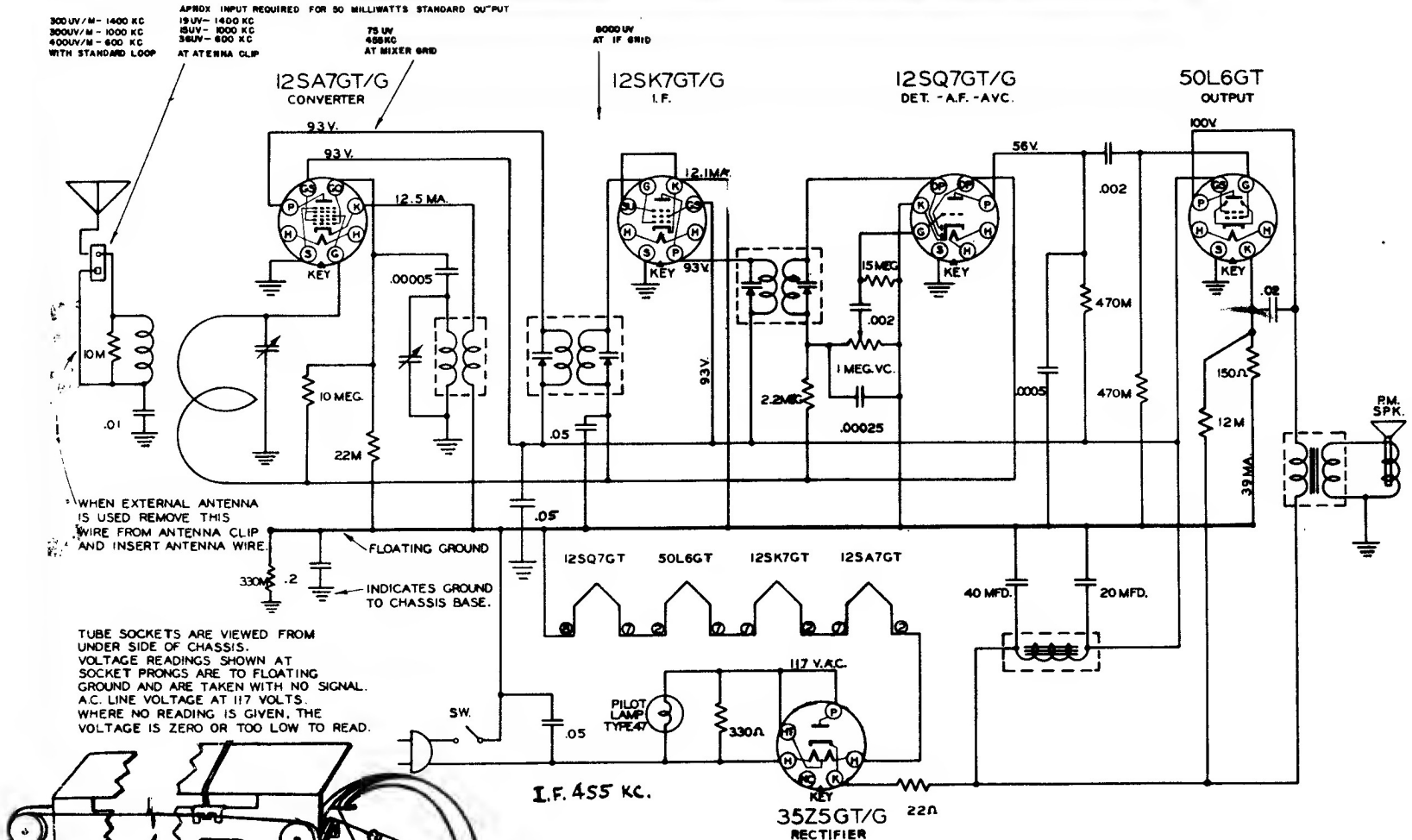
300UV/M - 1400 KC  
 300UV/M - 1000 KC  
 400UV/M - 600 KC  
 WITH STANDARD LOOP

APPROX INPUT REQUIRED FOR 50 MILLIWATTS STANDARD OUTPUT

19UV - 1400 KC  
 18UV - 1000 KC  
 38UV - 600 KC  
 AT ANTENNA CLIP

75 UV  
 450 MC  
 AT MIXER GRID

8000 UV  
 AT IF GRID



WHEN EXTERNAL ANTENNA IS USED REMOVE THIS WIRE FROM ANTENNA CLIP AND INSERT ANTENNA WIRE.

FLOATING GROUND  
 INDICATES GROUND TO CHASSIS BASE.

TUBE SOCKETS ARE VIEWED FROM UNDER SIDE OF CHASSIS. VOLTAGE READINGS SHOWN AT SOCKET PRONGS ARE TO FLOATING GROUND AND ARE TAKEN WITH NO SIGNAL. A.C. LINE VOLTAGE AT 117 VOLTS. WHERE NO READING IS GIVEN, THE VOLTAGE IS ZERO OR TOO LOW TO READ.

I.F. 455 KC.

35Z5GT/G  
 RECTIFIER

**FOR ARVIN RADIOS  
 MODELS 555; 555A; 552N; 8552AN  
 CHASSIS RE-202 AND RE-231  
 5 TUBE AC-DC**

MANUFACTURED BY NOBLITT-SPARKS INDUSTRIES, INC., COLUMBUS, IND.

STRING MAKES ONE COMPLETE TURN AROUND TUNING SHAFT & CONDENSER PULLEY