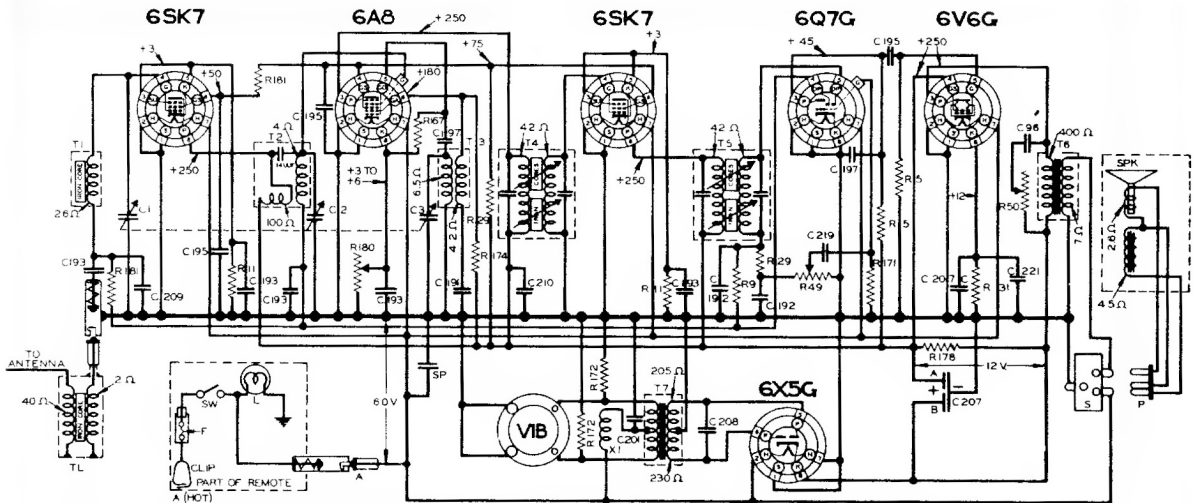


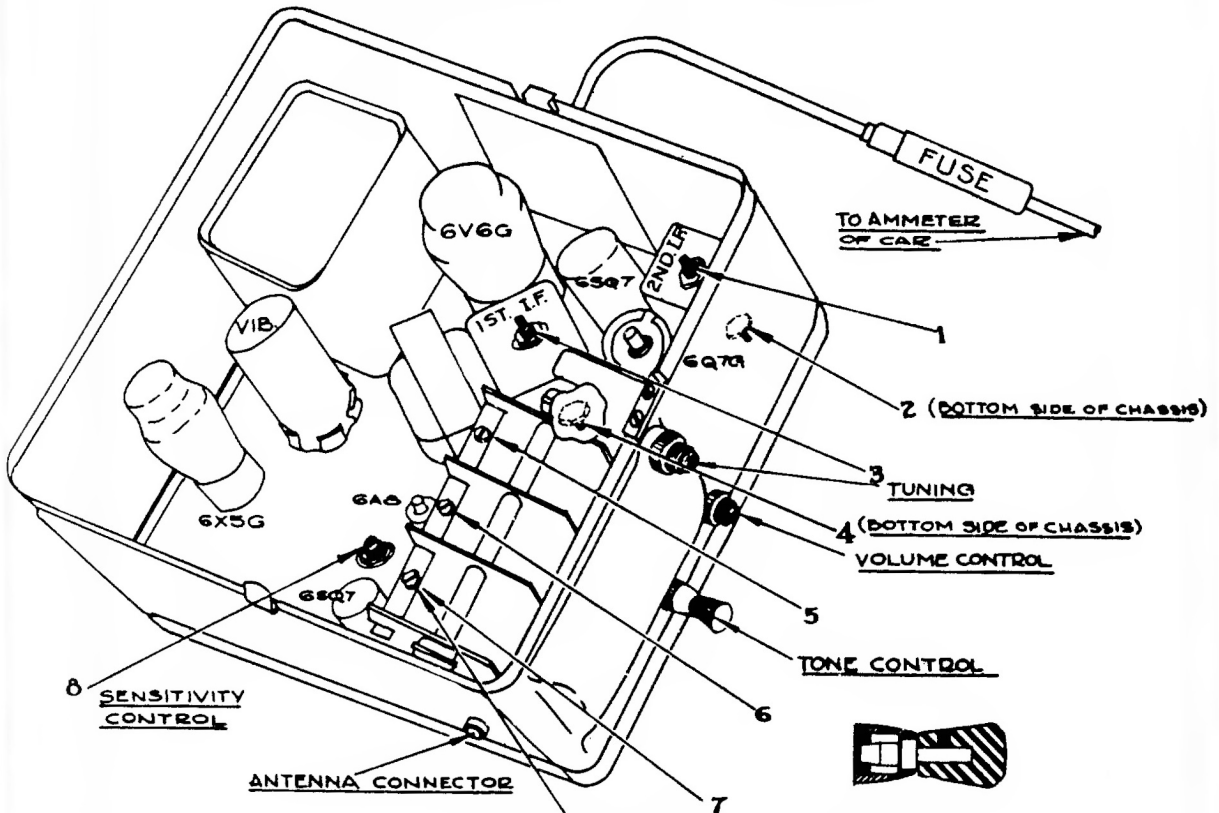
ARVIN CAR RADIO CHASSIS RE-60



NOTE - ALL VOLTAGES GIVEN FOR 30" INPUT OF 6 VOLTS. ALLOW ±10% ON ALL VOLTAGES & RESISTANCES OF WINDING

RESISTORS			CONDENSERS			CHOKES & TRANSFORMERS			MISCELLANEOUS UNITS		
P	FORMER PART NO.	WATTAGE	C	FORMER PART NO.	WVLT.	T	TYPE	PART NO.	SYMBOL	DESCRIPTION	PART NO.
1	100K	1/2	1	100K	50	1	ANTENNA COIL	00-1800	T	TUNER - 80 AMP	17-226A
2	100K	1/2	2	100K	50	2	AF COIL	00-1800	L	REAL LIGHT WAB - MFD204 NO. 51	17-300A
3	100K	1/2	3	100K	50	3	1ST I.F. COIL	00-1800	P	SPEAKER PLUG	17-4700
4	100K	1/2	4	100K	50	4	2ND I.F. COIL	00-1800	S	SPEAKER SOCKET	17-1200
5	100K	1/2	5	100K	50	5	OUTPUT TRANS	00-1800	SP	SPEAKER ASSEMBLY	17-6500
6	100K	1/2	6	100K	50	6	POWER TRANS	00-1800	SW	POWER SWITCH	17-1200
7	100K	1/2	7	100K	50	7	TRANSFORMER	00-1800	TL	TRANSMISSION LINE	00-1800
8	100K	1/2	8	100K	50	8	CHOKER	00-1800	VIB	VIBRATOR	17-1200

INTERMEDIATE FREQUENCY 170 K.C.
FREQUENCY RANGE 1570 TO 540 K.C.
NOBLITT-SPARKS INDUSTRIES, INC.,
COLUMBUS, INDIANA



ADJUST THIS ANTENNA BALANCING SCREW AFTER INSTALLATION OF THE RADIO ON THE CAR. TUNE IN A WEAK STATION FROM 1200 TO 1400 K.C. AND TURN UNTIL MAXIMUM VOLUME IS OBTAINED.