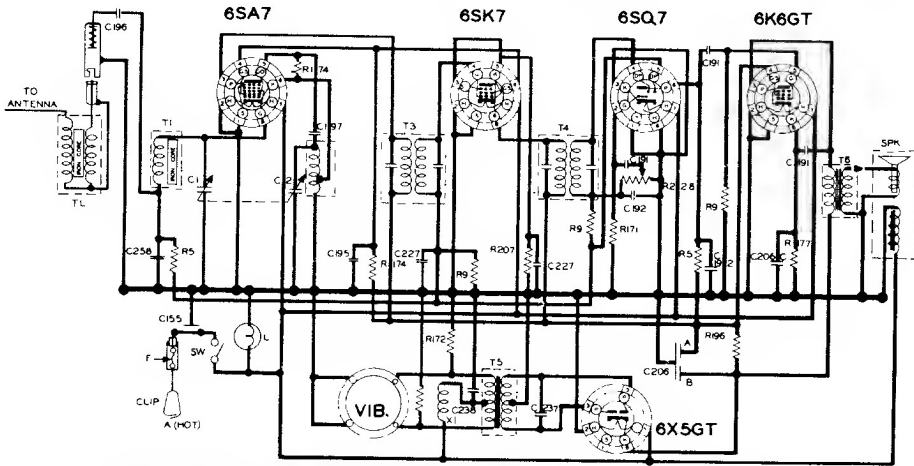


ARVIN CAR RADIO CHASSIS RE-84

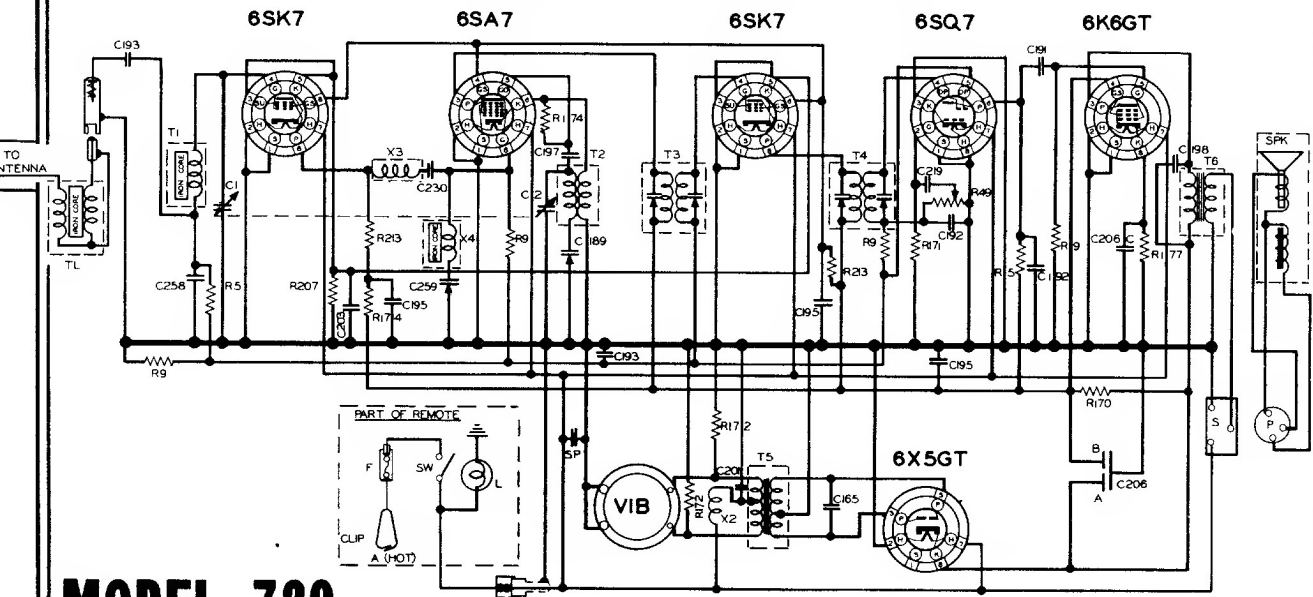


RESISTORS		CONDENSERS		CHOKES & TRANSFORMERS		MISCELLANEOUS UNITS	
SYMBOL	PART NO.	SYMBOL	PART NO.	SYMBOL	PART NO.	SYMBOL	DESCRIPTION
R1	500K	C1	17-1280	T1	00-4626	F	FUSE 20 AMPS
R2	1M	C2	17-1280	T2	00-7100	L	DIAL LIGHT BULB-MAZDA NO. 31
R3	500K	C3	17-1280	T3	00-7100	P	SPEAKER PLUG
R4	1M	C4	17-1280	T4	00-7100	S	SPEAKER SOCKET
R5	500K	C5	17-1280	T5	00-4626	SPK	SPEAKER ASSEMBLY
R6	1M	C6	17-1280	T6	00-4626	SW	POWER SWITCH
R7	500K	C7	17-1280	T7	00-4626	TL	TRAP CHOKES
R8	1M	C8	17-1280	T8	00-4626	VB	VIBRATOR
R9	500K	C9	17-1280	T9	00-4626		
R10	1M	C10	17-1280	T10	00-4626		

IF PEAK 455 KC.
FREQUENCY RANGE 1575 TO 540 KC.
NOBLITT-SPARKS INDUSTRIES, INC.
COLUMBUS, INDIANA

MODEL 520

ARVIN CAR RADIO — CHASSIS RE-86



MODEL 720

RESISTORS		CONDENSERS		CHOKES & TRANSFORMERS		MISCELLANEOUS UNITS	
SYMBOL	PART NO.	SYMBOL	PART NO.	SYMBOL	PART NO.	SYMBOL	DESCRIPTION
R1	500K	C1	17-2070	T1	00-4626	F	FUSE 20 AMPS
R2	1M	C2	17-2070	T2	00-7100	L	DIAL LIGHT BULB-MAZDA NO. 31
R3	500K	C3	17-2070	T3	00-7100	P	SPEAKER PLUG
R4	1M	C4	17-2070	T4	00-7100	S	SPEAKER SOCKET
R5	500K	C5	17-2070	T5	00-4626	SPK	SPEAKER ASSEMBLY
R6	1M	C6	17-2070	T6	00-4626	SW	POWER SWITCH
R7	500K	C7	17-2070	T7	00-4626	TL	TRAP CHOKES
R8	1M	C8	17-2070	T8	00-4626	VB	VIBRATOR
R9	500K	C9	17-2070	T9	00-4626		
R10	1M	C10	17-2070	T10	00-4626		

IF PEAK 455 K.C.
FREQUENCY RANGE 1575 TO 540 K.C.
NOBLITT-SPARKS INDUSTRIES, INC.
COLUMBUS, INDIANA