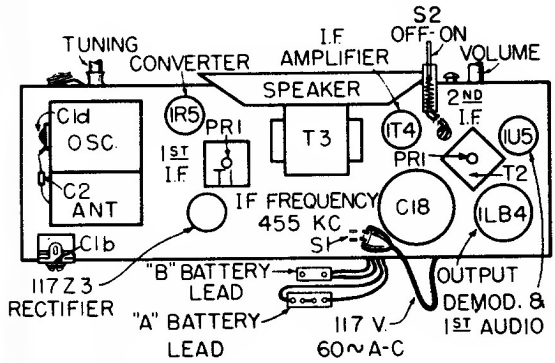
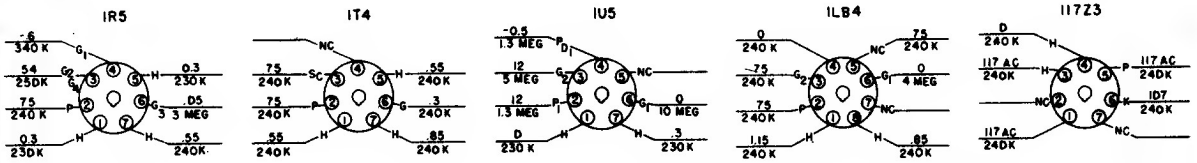


CONDITIONS OF MEASUREMENTS

VOLTAGE 117 A.C. ZERO SIGNAL INPUT. VOL. CDNT. MIN. SOCKET VOLTAGE TO CHASSIS GROUND. D.C. AT 20,000 Ω /V. A.C. AT 1,000 Ω /V. SWITCH S1 CLOSED.



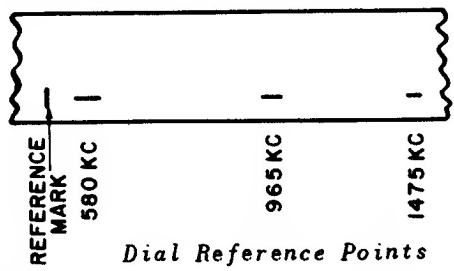
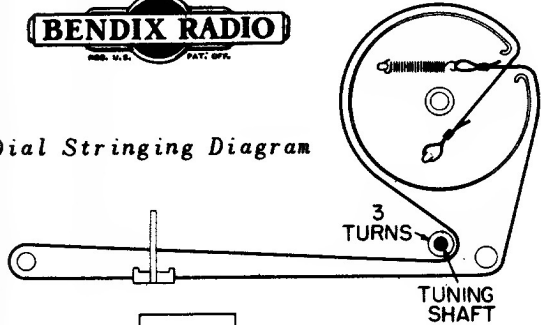
Bendix Radio 55X4

CIRCUIT ALIGNED	DIAL POINTER	INPUT FREQ.	APPLY THROUGH	ADJUST
IF	Max. To Right	†455KC	.01 mfd	SLUGS-Top & Bottom of T2 SLUGS-Top & Bottom of T1 (Fig. 3)
OSC. & ANT.	1475 Ref. Mark (Fig. 4)	1475KC	50 mmf	* Check Calibration
	965 Ref. Mark (Fig. 4)	965KC	50 mmf	* Check Calibration
	580 Ref. Mark (Fig. 4)	580KC	50 mmf	* Check Calibration

† If calibration does not check within the frequency mark, both oscillator and antenna sections of the gang condenser must be bent to correct tracking.
* Signal Generator connected to external antenna connection for complete alignment.

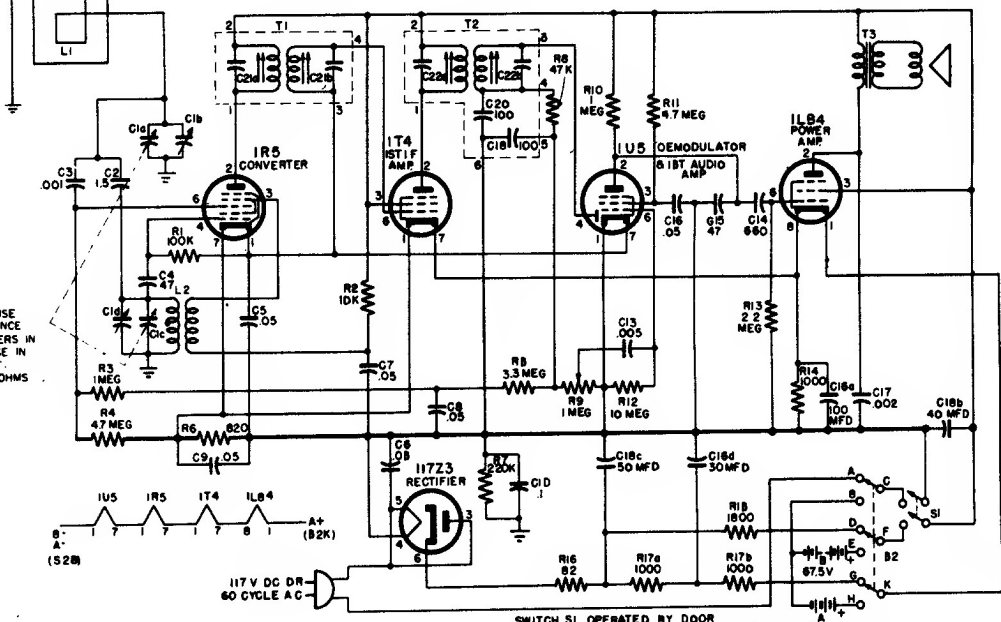


Dial Stringing Diagram



Dial Reference Points

NOTES
UNLESS OTHERWISE STATED CAPACITANCE IN WHOLE NUMBERS IN MMF, CAPACITANCE IN DECIMALS IN MF, RESISTANCE IN OHMS K = 1000 Ω .



SWITCH S1 OPERATED BY DOOR
SWITCH S2 OPERATED BY LINE CORD PLUG.