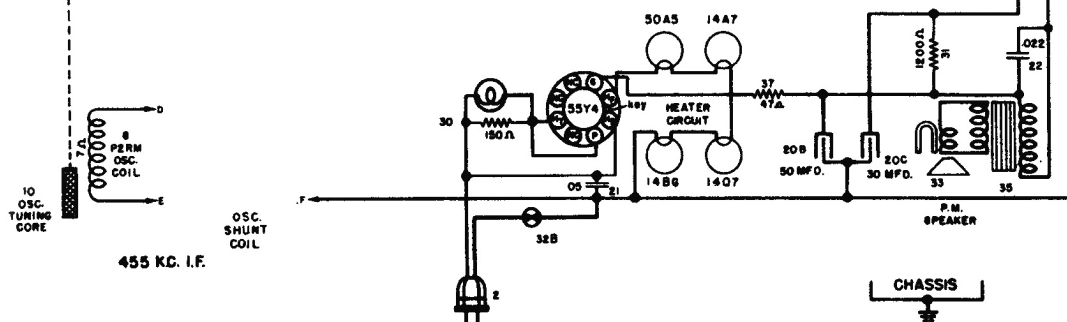
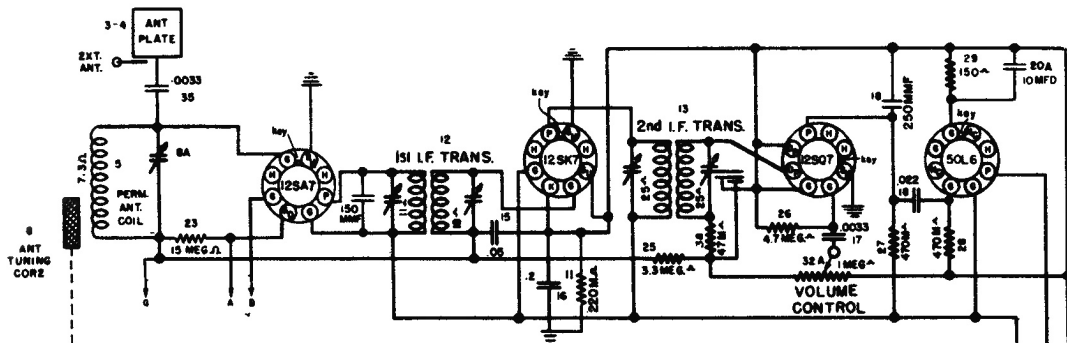


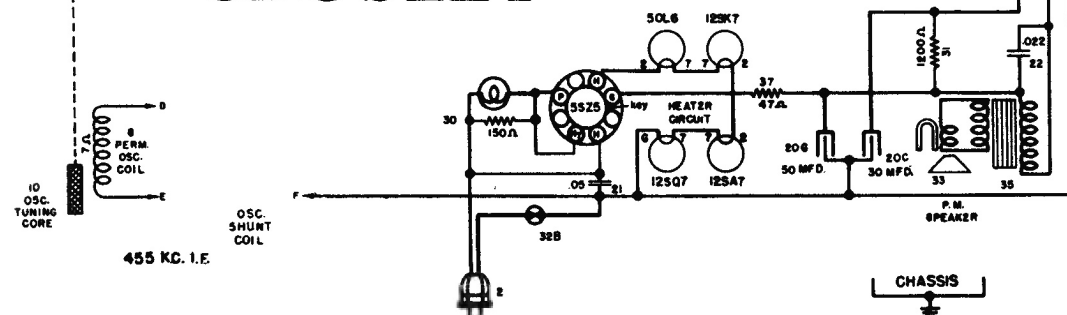
Please refer to the next page.



SCHMATIC DIAGRAM—MODEL 56TG, 56TH, 56TJ (LOCTAL)

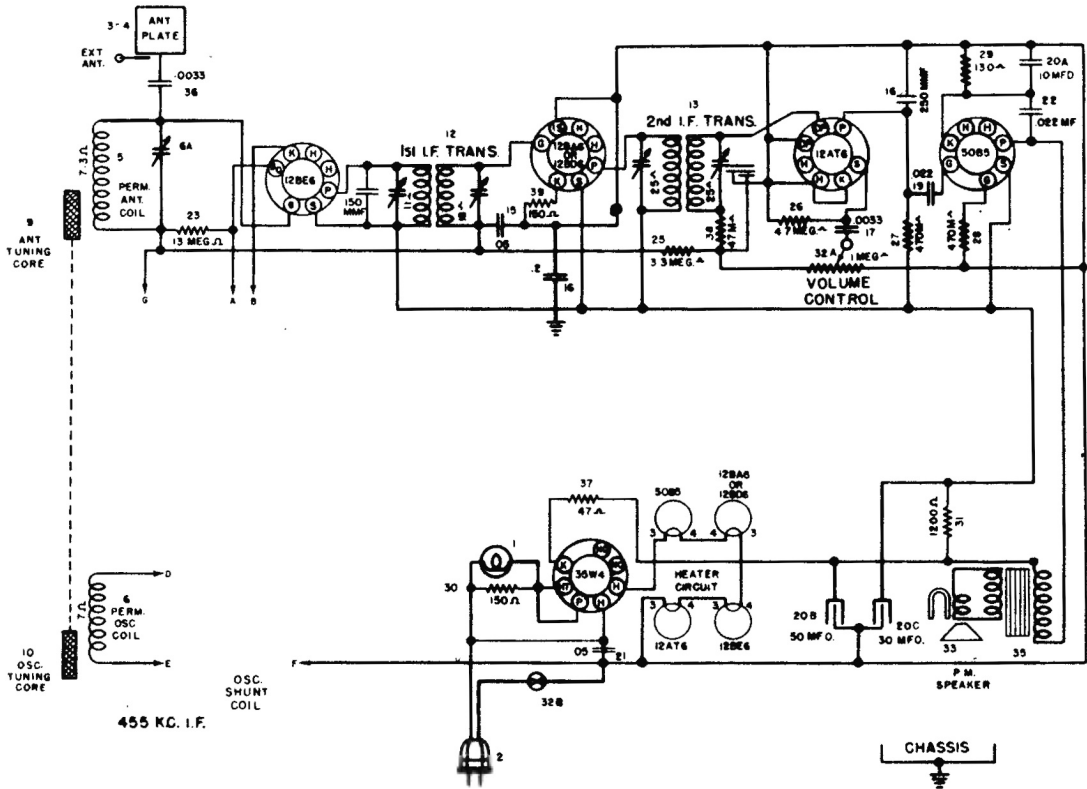


CROSLLEY



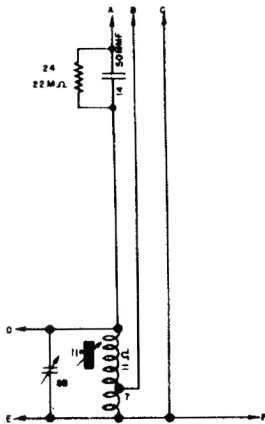
SCHMATIC DIAGRAM—MODEL 56TG-O, 56TH-O, 56TJ-O (OCTAL)

CROSLEY

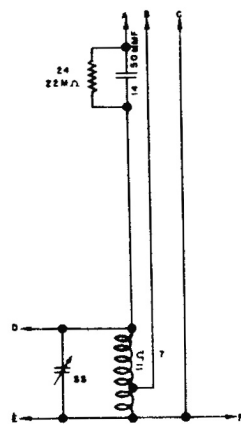


SCHMATIC DIAGRAM—MODEL 56TG-M, 56TH-M, 56TJ-M (MINIATURE)

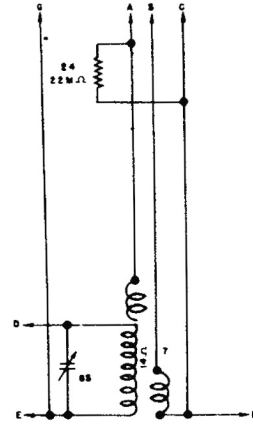
Select oscillator shunt coil circuit which corresponds to the model radio you are servicing. Connection G is used in the 3rd production sets.



THE ABOVE OSCILLATOR SHUNT COIL IS USED IN THE FIRST PRODUCTION MODELS. IT IS MOUNTED ON THE PERMEABILITY TUNER AND USES AN ADJUSTABLE IRON CORE. "C" IS NOT USED WITH A MINIATURE OR AN OCTAL TUBE.



THIS OSCILLATOR SHUNT COIL IS USED IN THE SECOND PRODUCTION MODELS. IT IS MOUNTED ON THE REAR OF THE PERMEABILITY TUNER AND DOES NOT USE AN ADJUSTABLE IRON CORE. "C" IS NOT USED WITH A MINIATURE OR AN OCTAL TUBE.



THIS OSCILLATOR SHUNT COIL IS USED IN THE THIRD PRODUCTION MODELS. IT IS MOUNTED UNDER THE CHASSIS AND DOES NOT USE AN ADJUSTABLE IRON CORE. "C" IS NOT USED WITH A MINIATURE OR AN OCTAL TUBE.

OSCILLATOR SHUNT COIL CHARTS