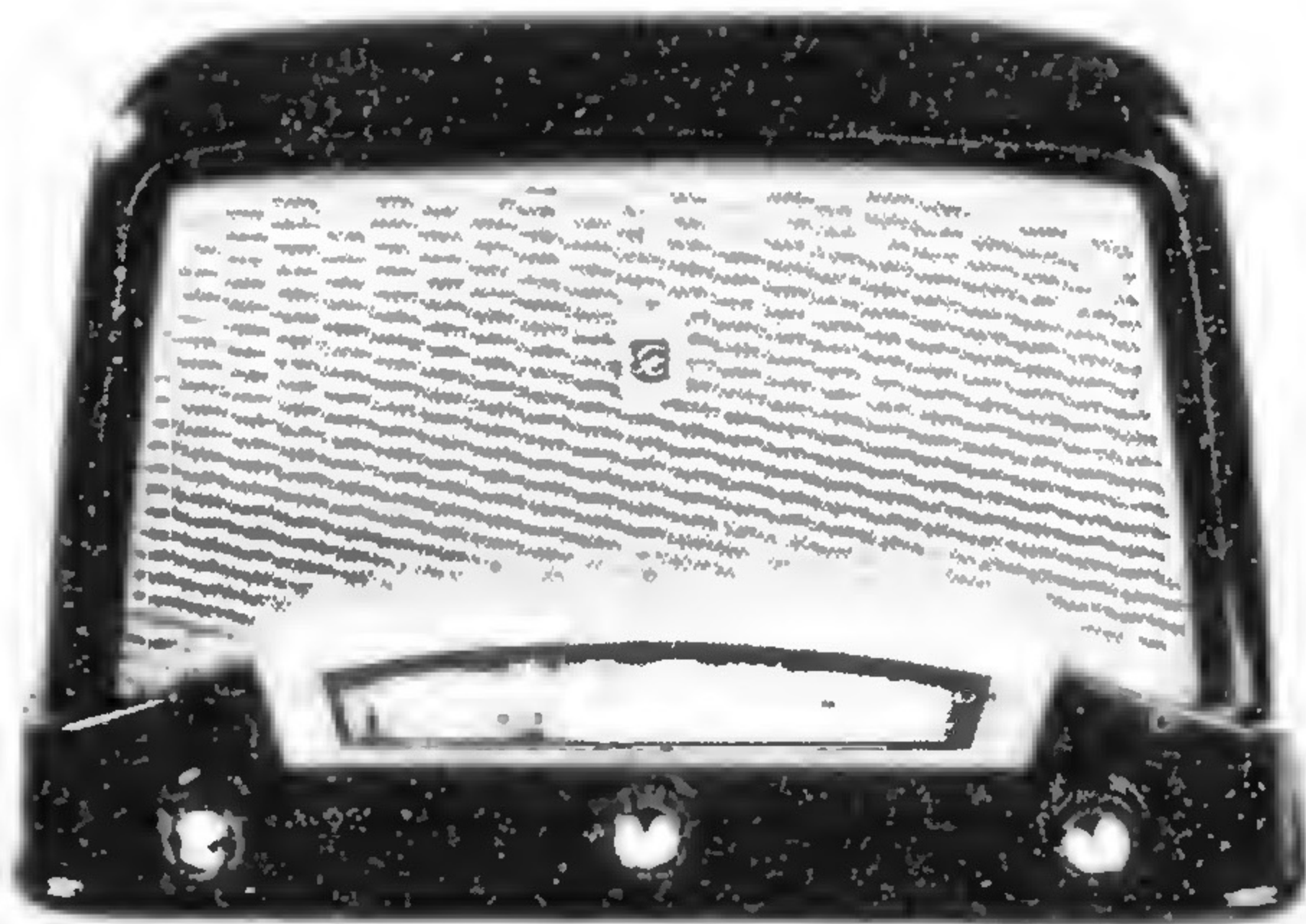


# CROSLEY

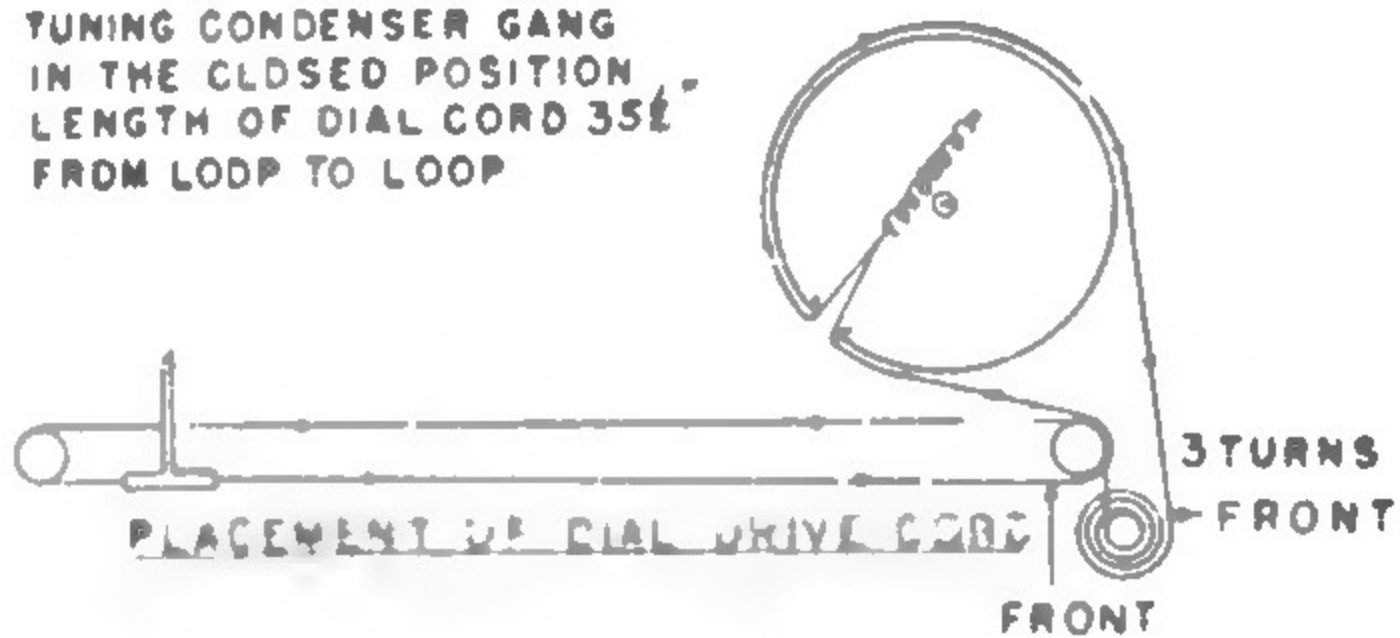
MODELS: 9-103, 9-104W

9-103



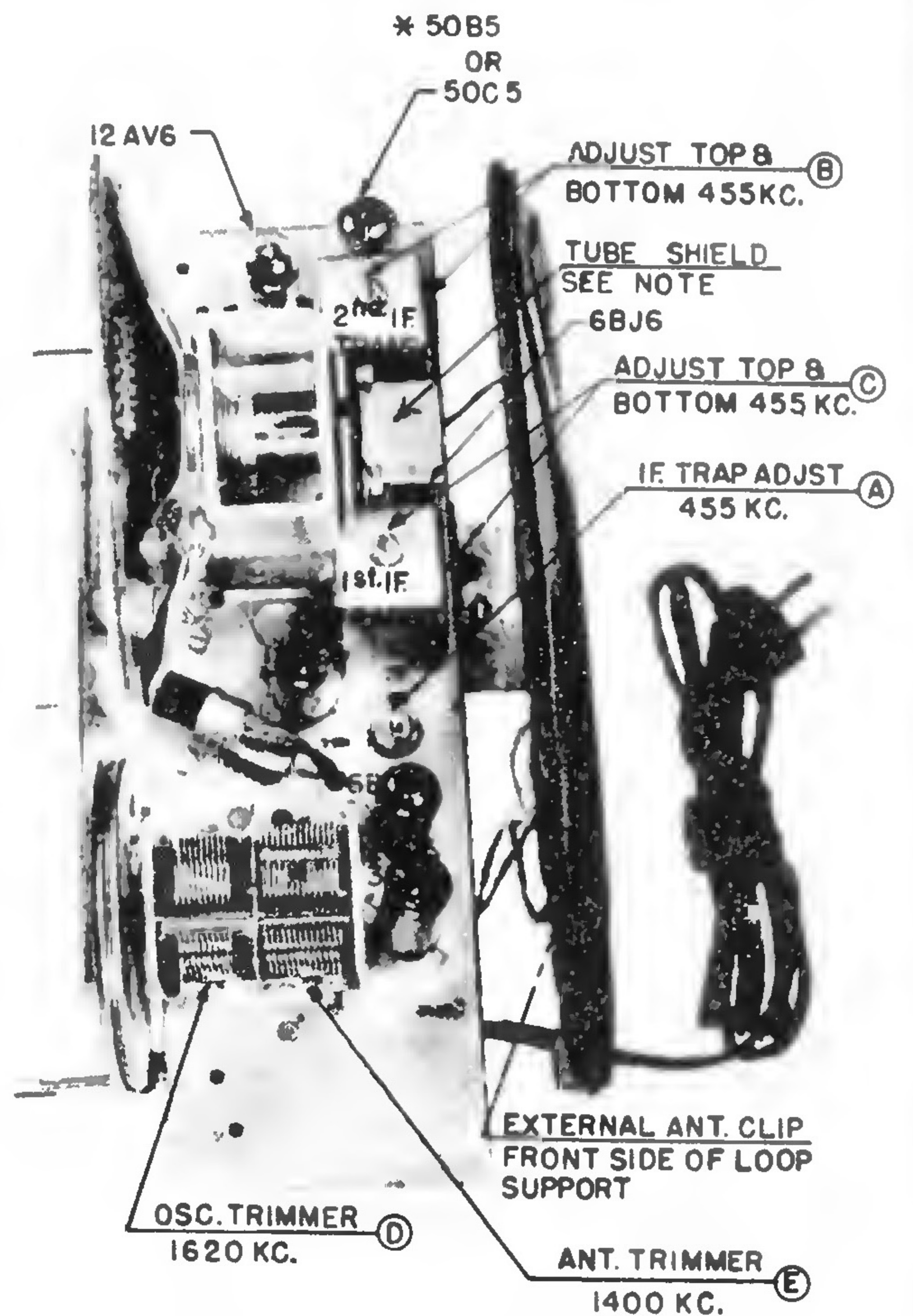
FREQUENCY RANGE: 540 to 1600 kc.  
INTERMEDIATE FREQUENCY: 455 kc.

TUNING CONDENSER GANG IN THE CLOSED POSITION LENGTH OF DIAL CORD 35 1/2" FROM LOOP TO LOOP



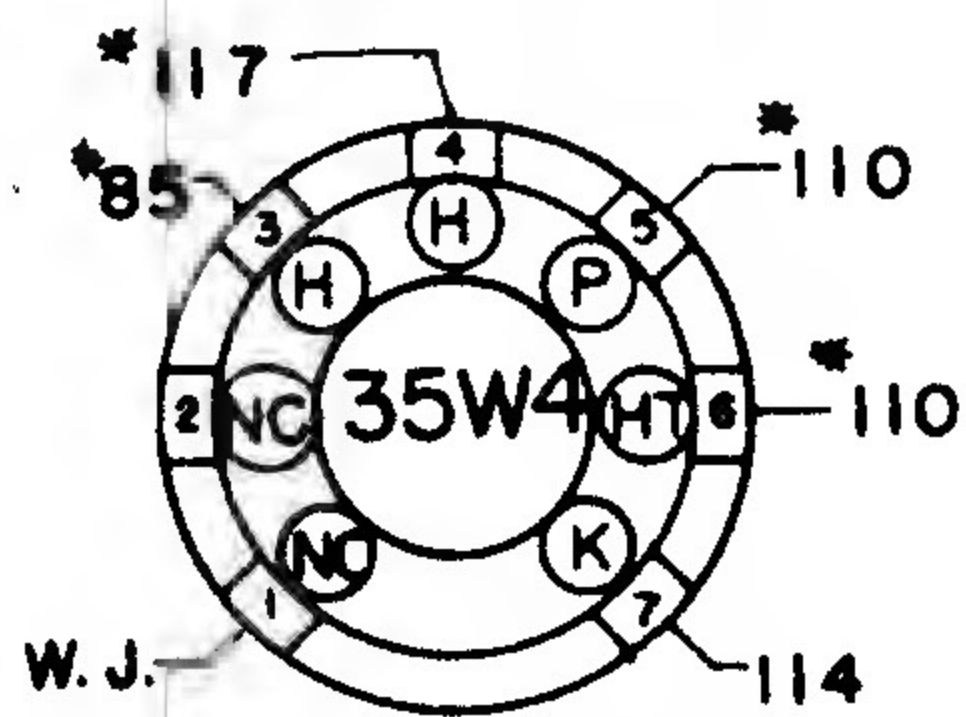
\*NOTE:

RECEIVERS WITH TUBE SHIELD USE 50B5 TUBE.  
RECEIVERS WITHOUT TUBE SHIELD USE 50C5 TUBE.

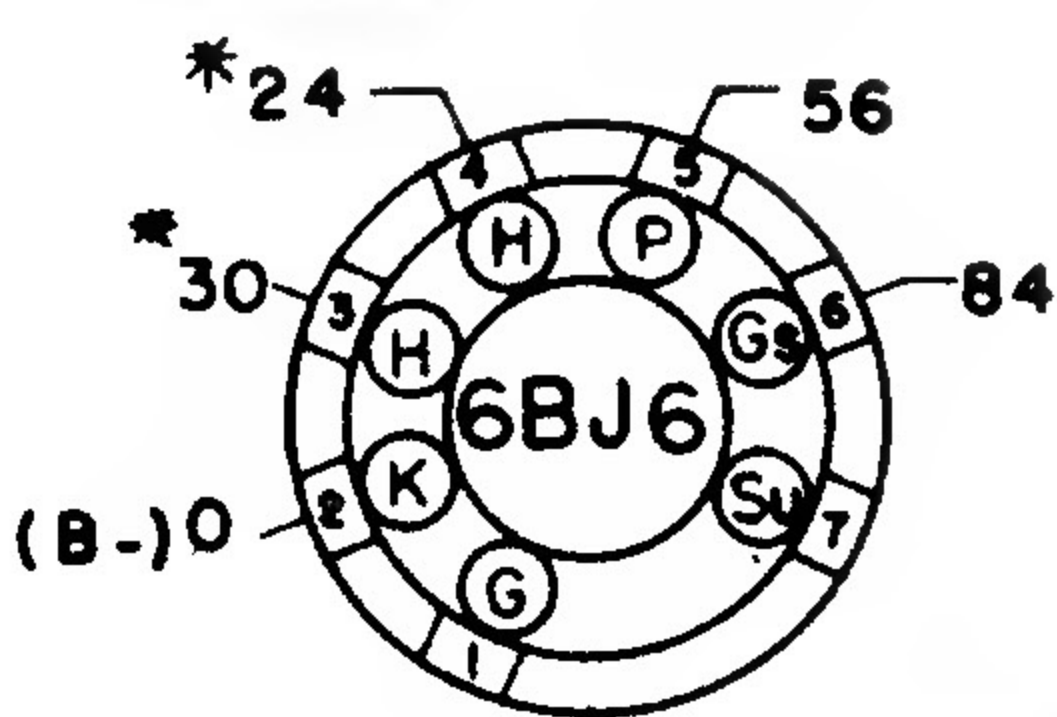


CHASSIS, VIEW

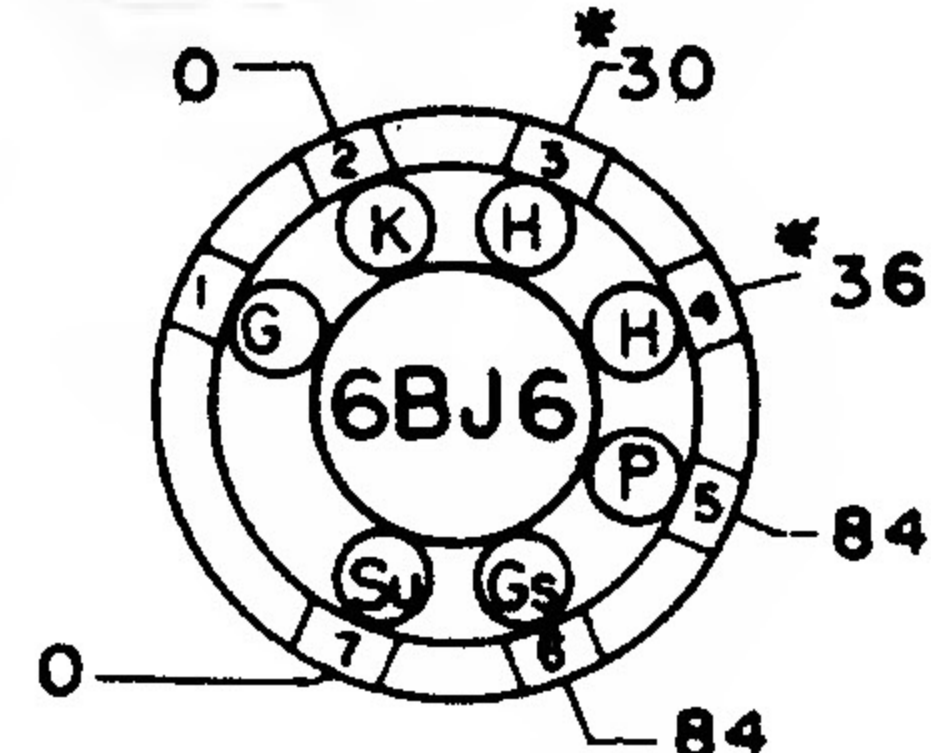
## RECTIFIER



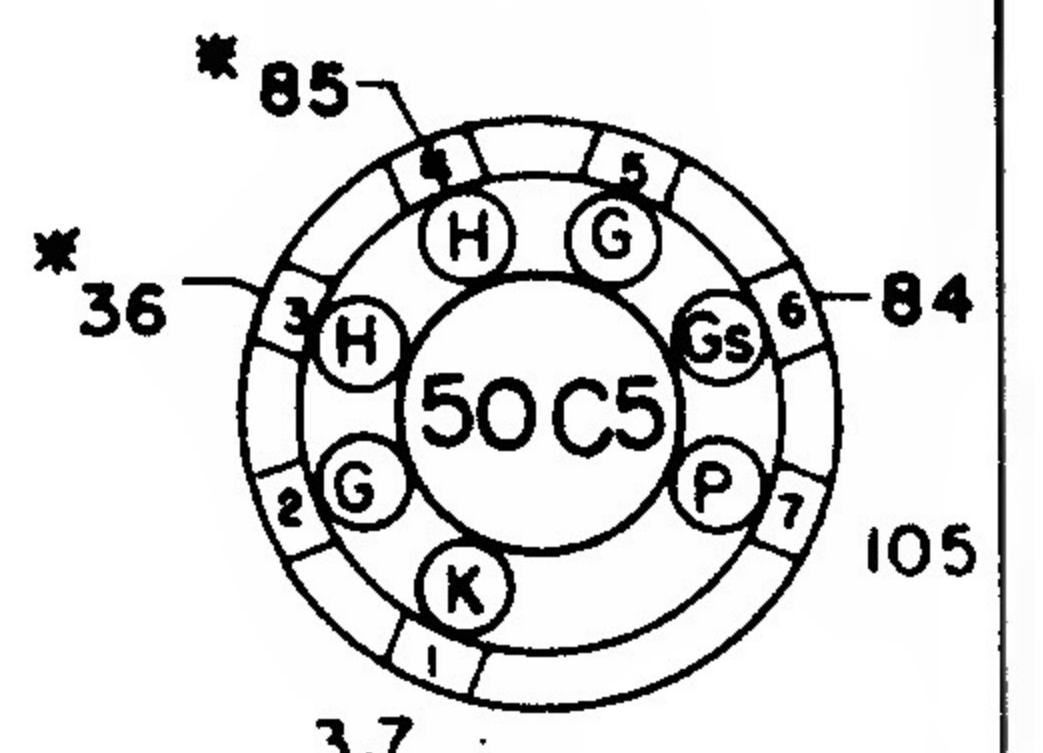
## R.F. AMPLIFIER



## I.F. AMPLIFIER



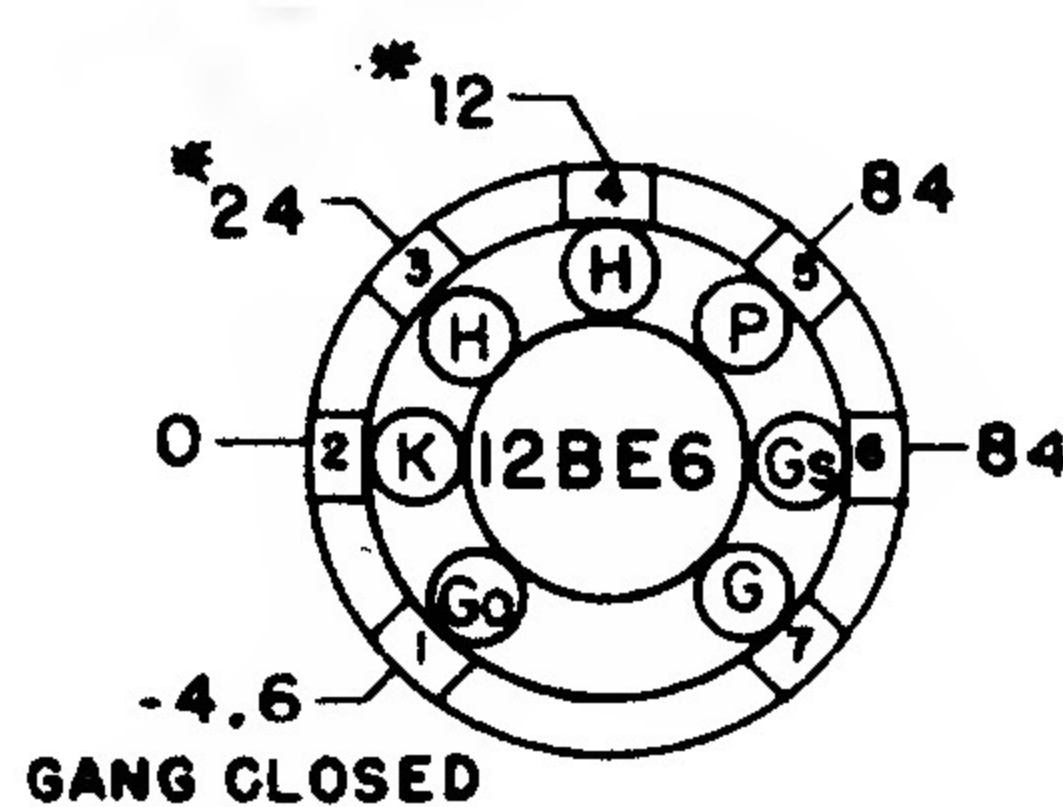
## OUTPUT



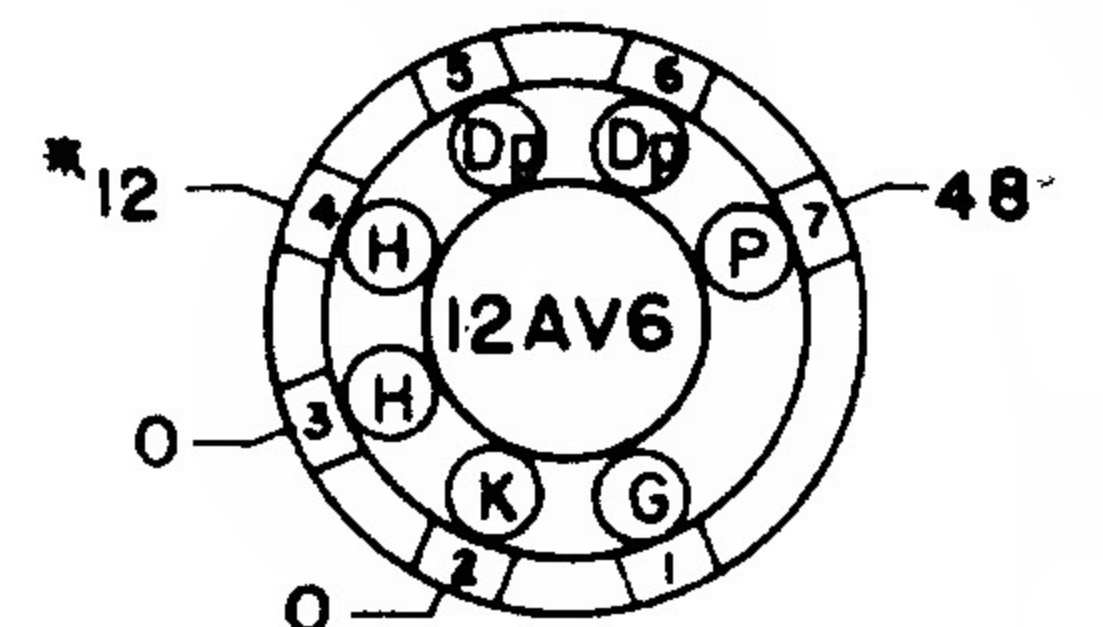
### NOTES:

1. BOTTOM VIEW OF TUBE SOCKETS.
2. VOLTAGE MEASURED WITH AN ELECTRONIC VOLTMETER FROM SOCKET LUG TO B-.
3. LINE VOLTAGE 117 V. 60 CYCLE.
4. NC=NO CONNECTION.
5. W.J.= WIRING JUNCTION.
6. \* = AC VOLTAGE.
7. SOCKET VOLTAGE TOLERANCE ± 10%.

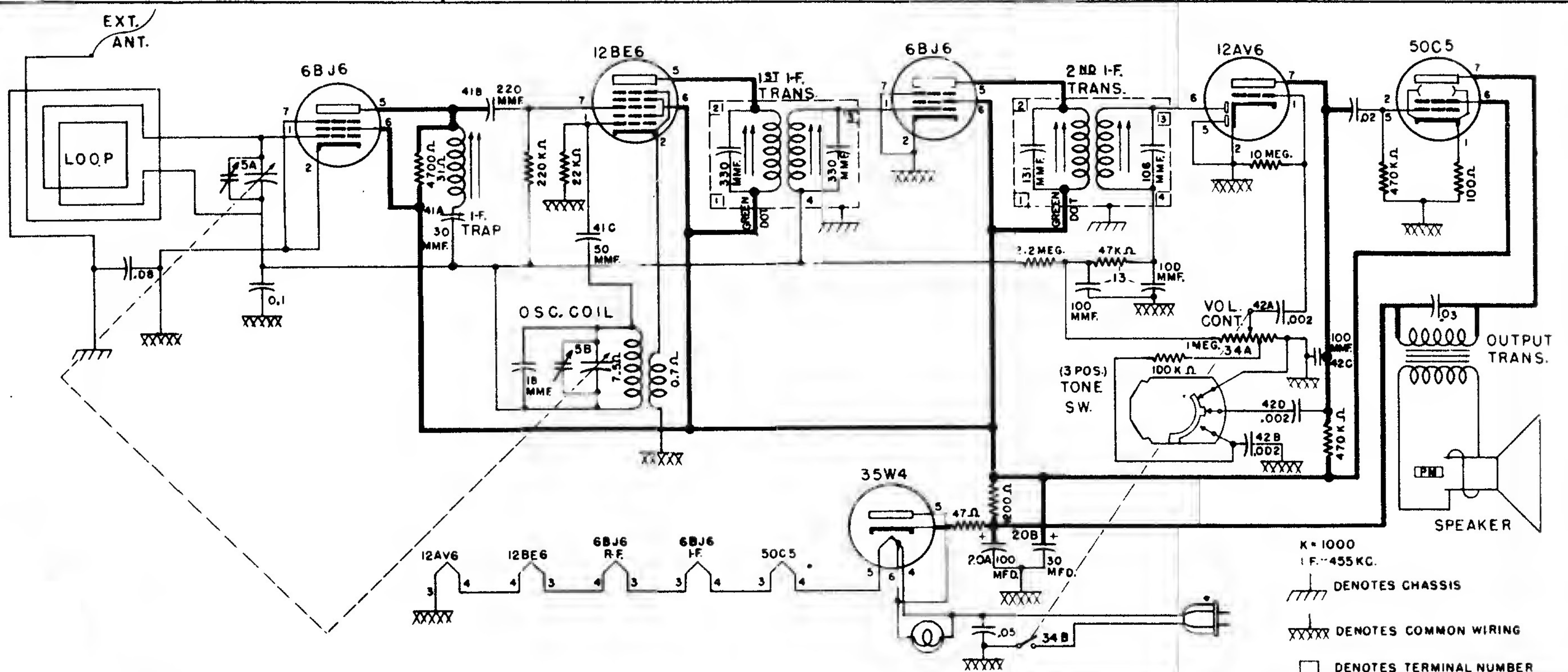
## CONVERTER



## DET. AVC. & 1st AUDIO AMPLIFIER



SOCKET VOLTAGE CHART



K = 1000  
M = 1000000  
F. = 455 KC.  
DENOTES CHASSIS  
XXXXX DENOTES COMMON WIRING  
□ DENOTES TERMINAL NUMBER