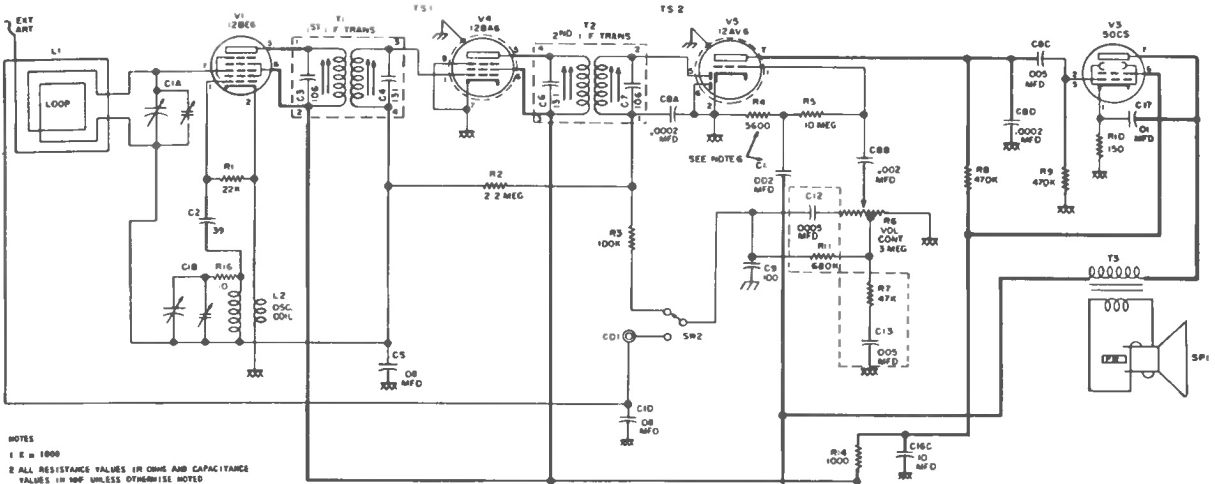
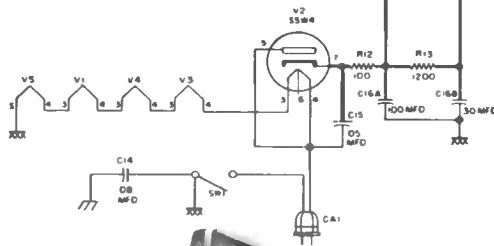
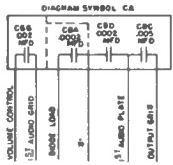


# CROSLEY

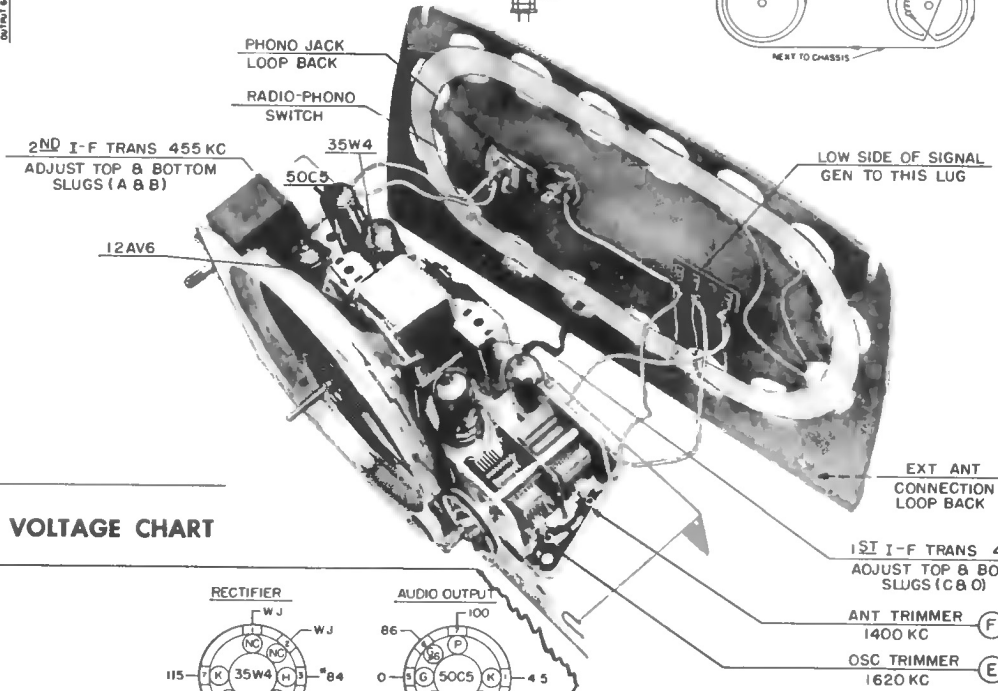
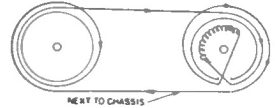
MODELS: E15WE, E15BE, E15TN, E15SL, E15CE, E20MN, E20GN, E20GY, E20TN  
(Chassis 15-20E)



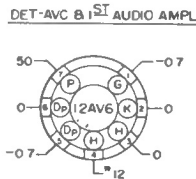
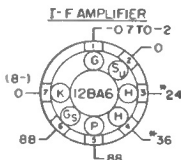
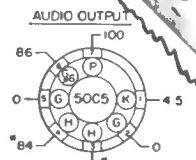
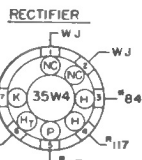
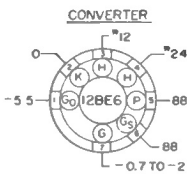
- NOTES  
 1 E = 1000  
 2 ALL RESISTANCE VALUES IN OHMS AND CAPACITANCE VALUES IN  $\mu$ F UNLESS OTHERWISE NOTED  
 3 NUMBER ONE TERMINAL ON I.F. TRANSFORMERS COORD WITH GREEN DOT, IMMEDIATE PREVIOUS CLOCKWISE.  
 4 I.F. = 455 KC.  
 5 CHASSIS  
 6 COMMON WIRING  
 7 R4 AND C11 USED WITH PH. SPEAKERS ONLY.



PLACEMENT OF DIAL DRIVE CORD  
 TUNING CAPACITOR GANG IN  
 THE CLOSED POSITION



## SOCKET VOLTAGE CHART



- NOTES  
 1 BOTTOM VIEW OF TUBE SOCKETS  
 2 VOLTAGES MEASURED WITH AN ELECTRONIC VOLTMETER FROM SOCKET LUG TO B-(PIN 7 OF 12BA6)  
 3 MEASURED WITH THE VOLUME CONTROL AT MINIMUM & NO SIGNAL INTO THE LOOP, TUNING GANG CLOSED  
 4 WJ = WIRING JUNCTION  
 5 = AC VOLTAGES, NC=NO CONNECTION.  
 6 LINE VOLTAGE = 117V, 60 $\pm$ 1%  
 7 SOCKET VOLTAGE TOLERANCE  $\pm$ 10%

## CHASSIS, TOP VIEW