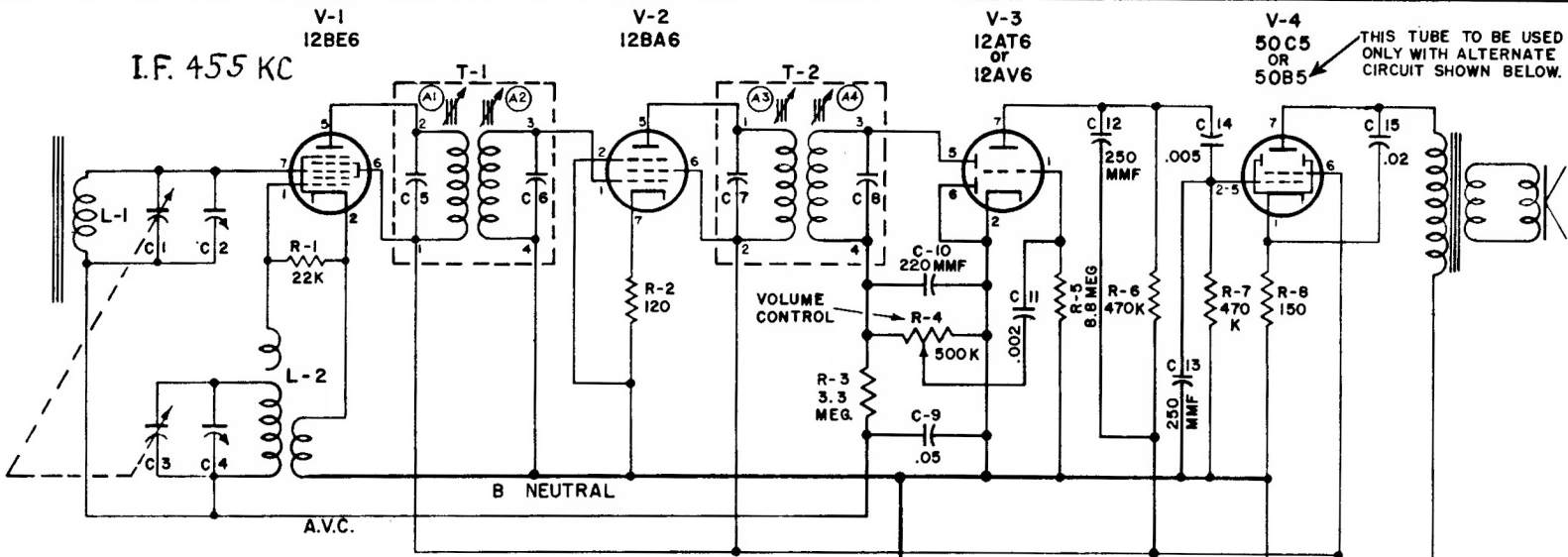


Emerson Radio

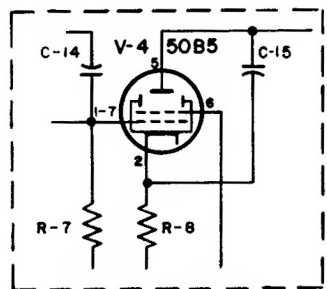
MODEL - 706B - 707B
CHASSIS - 120156-B



THIS TUBE TO BE USED ONLY WITH ALTERNATE CIRCUIT SHOWN BELOW.

AN ACCIDENTAL APPLICATION OF A POSITIVE VOLTAGE TO THE A.V.C. CIRCUIT DURING SERVICING CAN TEMPORARILY DISABLE THE RECEIVER. TO RESUME OPERATION REMOVE CHARGE ON A.V.C. BY SHORTING THIS POINT TO B NEUTRAL OR SWITCHING THE RECEIVER OFF MOMENTARILY. THE TUNING GANG FRAME IS AT A.V.C. POTENTIAL.

RES. IN OHMS, CAP. IN MFDS UNLESS OTHERWISE NOTED.



ALTERNATE CIRCUIT WHEN USING 50B5 (V-4) AS OUTPUT TUBE

Measurements made with voltohmyst or equivalent.
Line voltage maintained at 117 volts a.c. for voltage measurements.

VOLTAGE READINGS FOR CHASSIS 120156-B

SYMBOL	TUBE	PIN 1	PIN 2	PIN 3	PIN 4	PIN 5	PIN 6	PIN 7
V-1	12BE6	-7.6	0	12 AC	24 AC	95	95	-.5
V-2	12BA6	0	0	24 AC	36 AC	95	95	1.3
V-3	12AT6 ⊕	-1	0	0	12 AC	-.65	0	.45
V-4	50C5 ‡	6.5	0	36 AC	85 AC	0	95	120
V-5	35W4	N.C.	N.C.	85 AC	117 AC	110 AC	112 AC	130

⊕ In some models 12AV6 may be used as alternate for 12AT6.

‡ The 50C5 may be substituted with a 50B5 but only when the alternate circuit is used shown in schematic diagram.

TYPE OF TUBES:

- V-1--12BE6, converter
- V-2--12BA6, i-f amplifier
- V-3--12AT6, or 12AV6, detector, a.v.c. a-f
- V-4--50C5, or 50B5 power output
- V-5--35W4, rectifier