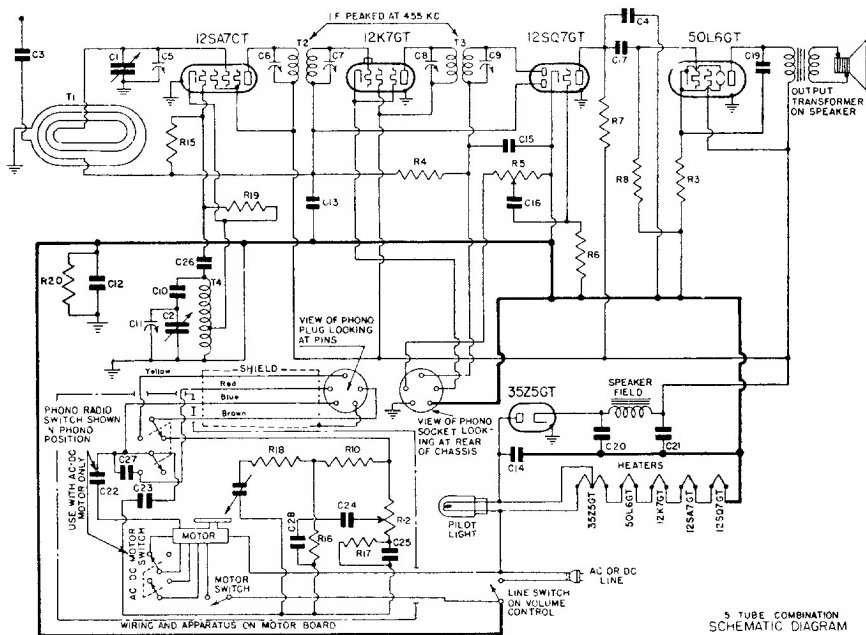


Emerson Radio



CV-289, 290 AND CV1-290 WITH 12SA7GT

ITEM	PART No.	DESCRIPTION
T1	6MW-171B	Loop antenna assembly (for CV-289, CV-291 and CV1-291) (see prod. ch. No. 4)
T1	6VW-188A	Loop antenna assembly (for CV-290 and CV1-290) (see production change No. 4)
T4	7BT-486A	Oscillator coil (see production change No. 2)
T2	7BT-488C	Double-tuned 455 kc first i-f transformer
T3	7BT-489A	Double-tuned 455 kc second i-f transformer
	or	
	7FT-513D	Double-tuned 455 kc second i-f transformer
R1	2CR-193	30,000 ohm 1/2 watt carbon resistor
R2	KR-53	50,000 ohm 1/4 watt carbon resistor
R3	3FR-293	140 ohm 1/2 watt wire-wound resistor
R4	NNR-220	3 megohm 1/4 watt carbon resistor
R5	6VR-364	Volume control .5 megohm with line switch
R6, R15	4XR-327	15 megohm 1/4 watt carbon resistor
R7, R8, R11, R18	KR-56	500,000 ohm 1/4 watt carbon resistor
R9, R10		KR-57
R12	6VR-366	Tone control, 75,000 ohm, with motor line switch
R13	6RR-375	170 ohm 1 watt wire-wound resistor
R14	4XR-334	2,500 ohm 1 watt carbon resistor
R19	LR-60	20,000 ohm 1/4 watt carbon resistor
R16, R20	LR-61	200,000 ohm 1/4 watt carbon resistor
R17	KR-54	100,000 ohm 1/4 watt carbon resistor
C1, C2	6RC-436	Two-gang variable condenser
C3, C16	3HC-274	0.002 mf, 600 volt tubular condenser
C4, C15, C26	4XC-394A	0.00022 mf mica condenser
+C5, C11		Trimmers, part of variable condenser
+C6, C7, C8, C9		Trimmers, part of i-f transformers
C10, C13, C23	BC-12	0.05 mf, 200 volt tubular condenser
C12	3CC-302	0.15 mf, 200 volt tubular condenser
C14	LC-64	0.05 mf, 400 volt tubular condenser
C17	6JC-425	0.024 mf, 400 volt tubular condenser
C18	4XC-404	20 mf, 150 volt dry electrolytic condenser
C19	LC-65	0.02 mf, 400 volt tubular condenser
C20, C21	6JC-426B	Dual 20 mf, 150 volt dry electrolytic condenser
C22	3LC-297A	0.01 mf, 400 volt tubular condenser (used only with a.c.-d.c. motors)
C24	IC-47A	0.0005 mf mica condenser
C25	KC-59	0.006 mf, 400 volt tubular condenser (see production change No. 6)
C27	NCC-127	0.01 mf, 200 volt tubular condenser
C28	NC-70A	0.0002 mf mica condenser
	6JS-368U	4" dynamic speaker (not used on CV-291 or CV1-191)
	6JS-386	6 1/2" permanent magnet dynamic speaker