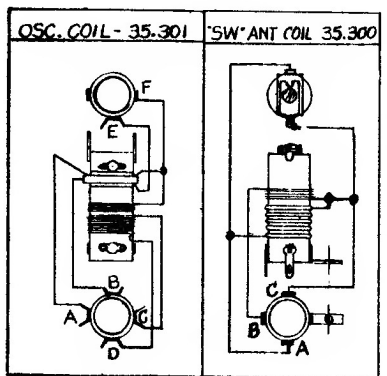


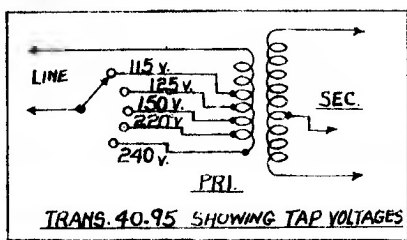
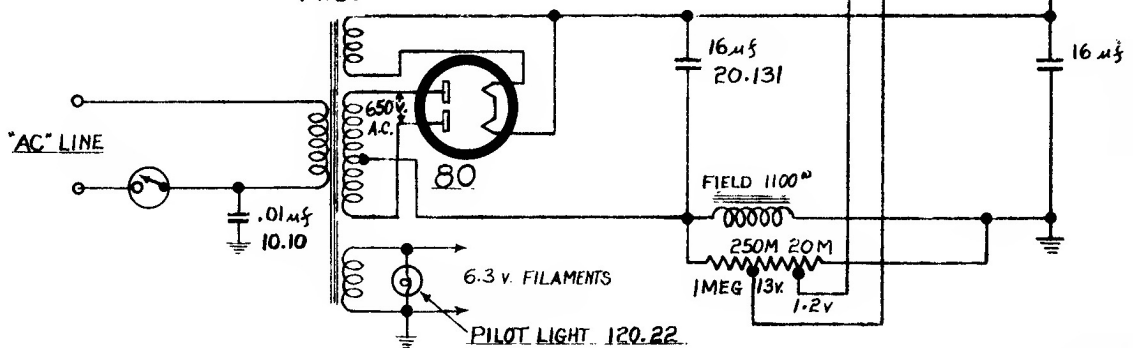
VAR. COND. 25.356A

25.119 (TRIPLE)

BAND-PHONO SWITCH 45.138



**COVERAGE =**  
 BROADCAST - 538-1625 KC.  
 SHORT WAVE - 4.7-16.5 MC.



TRANS. 40.95 SHOWING TAP VOLTAGES

**SPEC'S -**  
 VOLTAGES MEASURED TO CHASSIS WITH 1000 OHMS PER VOLT VOLTMETER  
 M = THOUSAND OHMS  
 ⏏ = CHASSIS  
 SWITCH 45.138 SHOWN IN 'BC' POSITION

**I.F. 456 KC.**

**Fada Radio Model 1256**