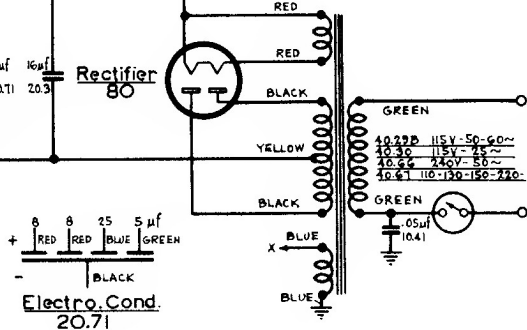


A-A PART NO. 25.105
 C-C " " 25.106
 E-E " " 25.107

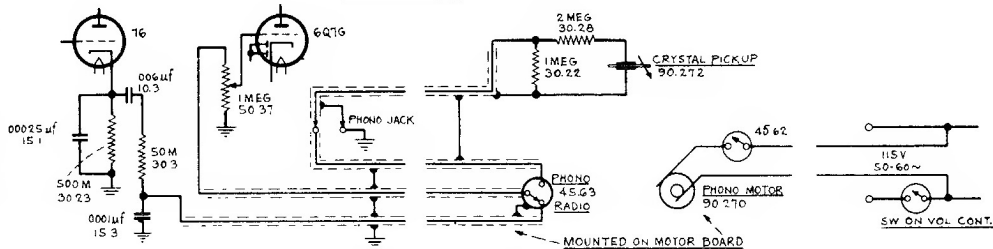
BAND SWITCH POSITIONS
 Ⓞ SHORT WAVE
 Ⓞ BROADCAST
 Ⓞ AUTOMATIC (B.C. ONLY)

⊥ = CHASSIS
 M = THOUSAND OHMS
 Ⓢ = SPEAKER PLUG & SOCKET
 No. 1 PRONG OF OCTAL SOCKETS GROUNDED

I.F. Peak = 456 Kc.



Model 366PT
 Phono Combination



FADA RADIO & ELECTRIC CO.
 LONG ISLAND CITY, N.Y.
 MODELS 366 & 366PT
 DRAWN BY: [Signature]
 DATE: 10-23-37
 CHECKED BY: [Signature]
 APPROVED BY: [Signature]

<p>Ant. Coil 35.48</p> <p>A-D = .02Ω B-D = 8.6Ω C-D = 2.6Ω</p>	<p>Osc. Coil 35.78</p> <p>A-C = .02Ω B-D = .33Ω E-F = 3.15Ω</p>
<p>1st. I.F. 35.95</p> <p>PR1. BLUE-RED = 23Ω SEC. GREEN-BROWN = 23Ω EXP. WINDG. YELLOW-BROWN = 15Ω</p>	<p>2nd I.F. 35.77</p> <p>PR1. BLUE-RED = 23Ω SEC. GREEN-BLACK = 22Ω</p>

NOTE Ⓞ ON EARLY MODELS I.F. PART NO. 35.89 IS USED IN PLACE OF 35.95.

NOTE Ⓞ ON EARLY MODELS PART NO. 25.11 IS USED IN PLACE OF PART NO. 25.66
 NOTE Ⓞ ON EARLY MODELS 10M RESISTOR - PART NO. 30.31 IS USED IN PLACE OF 35.67 & A.F. CHOKER 35.67 IS USED IN PLACE OF 100M. 30.24