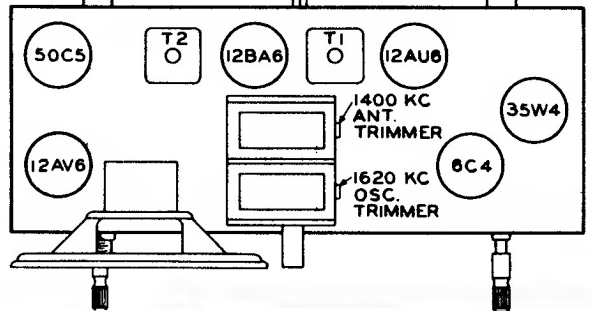
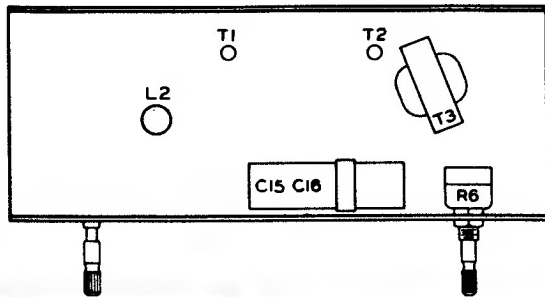
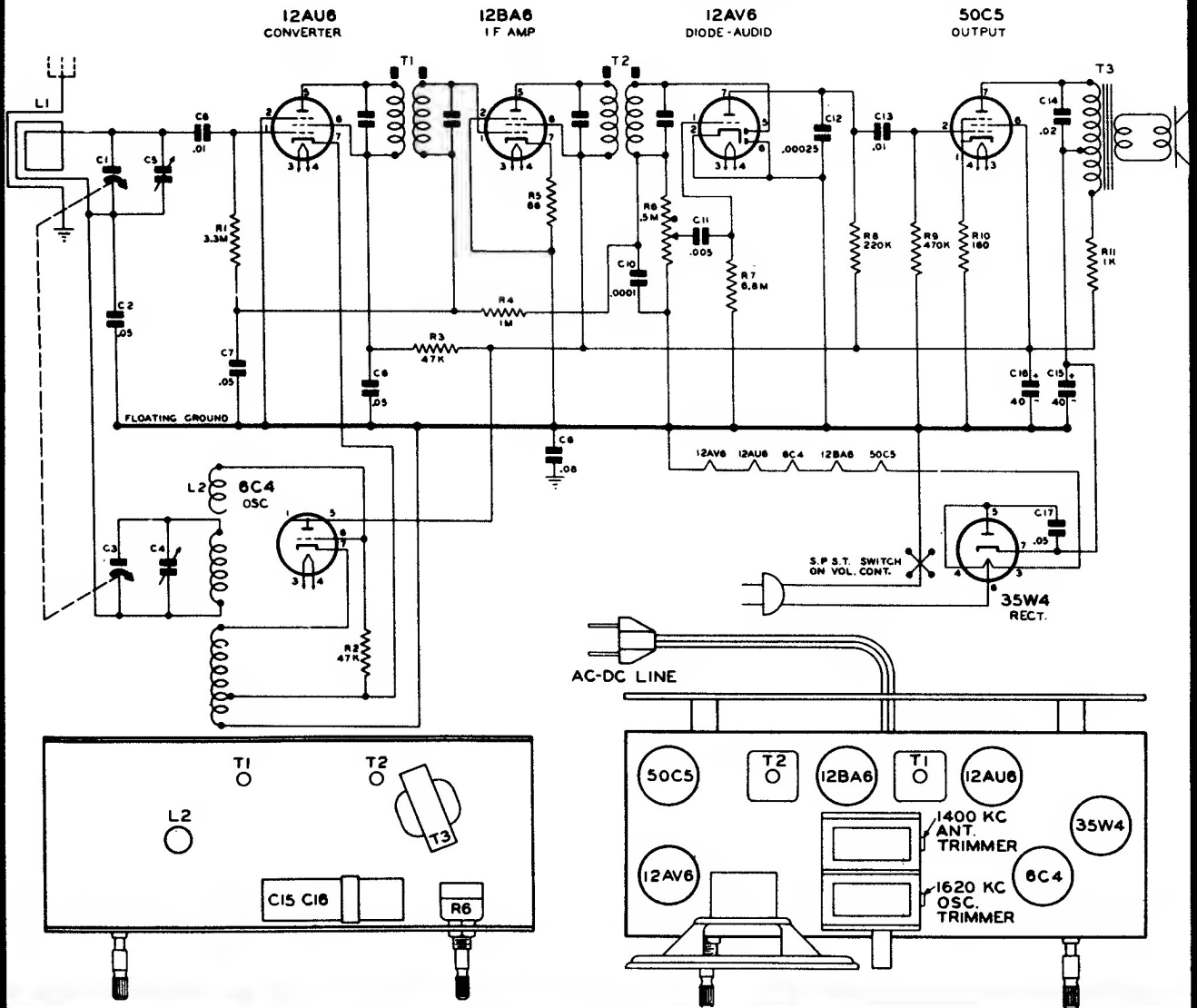


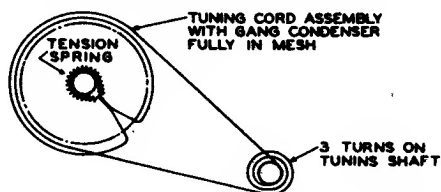
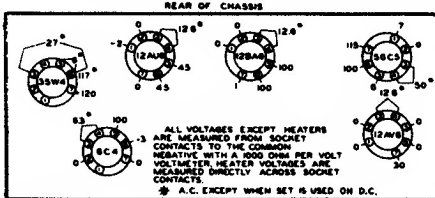
Firestone

CODE NO.
STOCK NO.
STOCK NO.

297-0-3123
4-A-85 Walnut
4-A-89 White



Steps	Set Receiver dial to:	TEST OSCILLATOR		DUMMY ANTENNA	Refer to parts layout diagram for location of trimmers mentioned below:
		Adjust test oscillator frequency to:	Attach output of test oscillator to:		
1	Any point where no interfering signal is received.	EXACTLY 455 KC	High side to grid of 12AU6 Tube. Low side to common negative.	.05 MFD. CONDENSER.	Adjust slugs at top and bottom of 2nd I.F. (T2) and then each of the slugs of the 1st I.F. (T1) for max. output.
2	Exactly 1620 KC	Exactly 1620 KC	External Antenna blue lead on loop.	100 MMFD CONDENSER	Adjust 1620 KC oscillator trimmer for maximum output.
3	Approx. 1400 KC	Approx. 1400 KC	External Antenna blue lead on loop.	100 MMFD CONDENSER	Adjust 1400 KC antenna trimmer for maximum output.



VOLTAGE TABLE