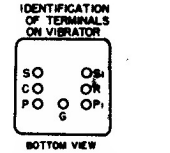
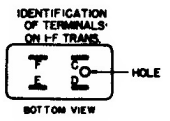
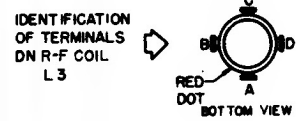
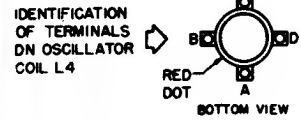


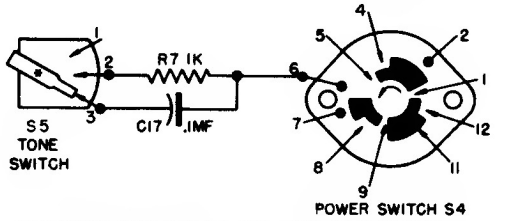
CAPACITOR VALUES IN MMF UNLESS OTHERWISE INDICATED. RESISTANCE VALUES IN OHMS. "K" = 1000, i.e. 22K = 22,000 OHMS



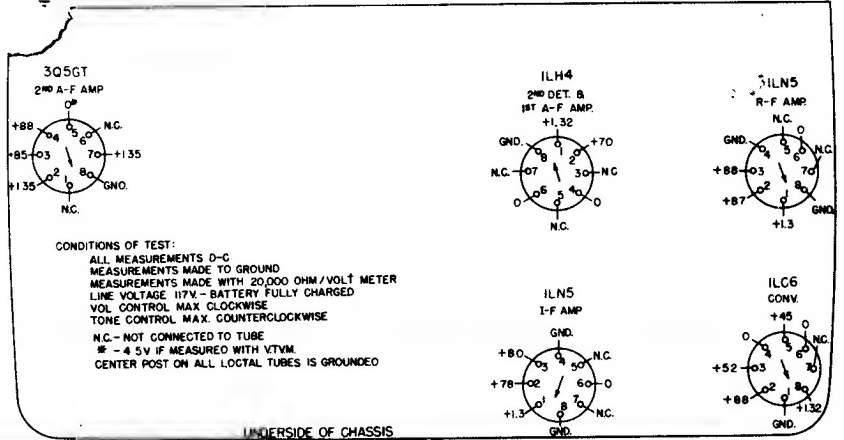
Coil and Switch Terminal Identification



IDENTIFICATION OF TERMINALS ON TONE AND POWER SWITCHES

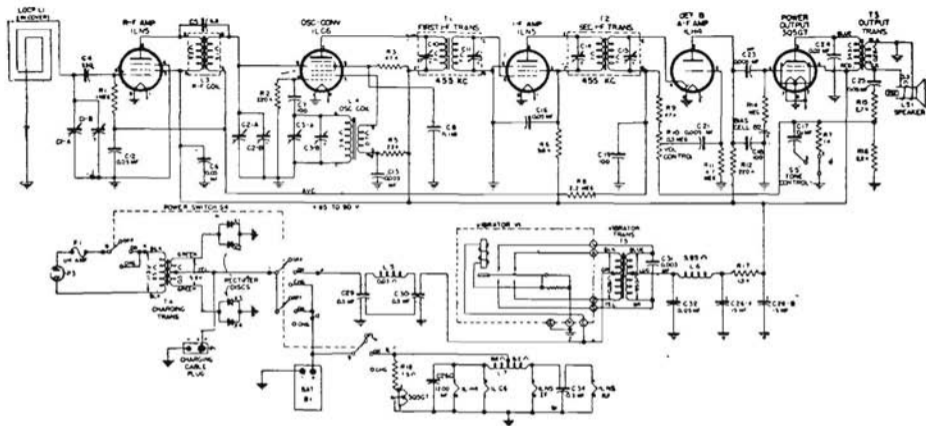


VIED FROM REAR OF RADIO. BOTH SWITCHES IN EXTREME COUNTER-CLOCKWISE POSITION.



CONDITIONS OF TEST:  
 ALL MEASUREMENTS D-C  
 MEASUREMENTS MADE TO GROUND  
 MEASUREMENTS MADE WITH 20,000 OHM/VOLT METER  
 LINE VOLTAGE 117V - BATTERY FULLY CHARGED  
 VOL CONTROL MAX. CLOCKWISE  
 TONE CONTROL MAX. COUNTERCLOCKWISE  
 N.C. - NOT CONNECTED TO TUBE  
 \* - 4.5V IF MEASURED WITH VTVM  
 CENTER POST ON ALL LOctal TUBES IS GROUNDED

**GENERAL ELECTRIC**  
**MODEL 250**



## GENERAL ELECTRIC MOD. 250

Portatile tipo campeggio, con accensione ad accumulatore provvisto di rettificatore a selenio per la ricarica. Alimentazione anodica dall'accumulatore, con vibratore.