

The Models 356, 357 and 358 are alike except for cabinets. On broadcast, a conventional gang condenser is used for tuning, while on FM, guillotine tuners are used to tune the antenna, r-f, and oscillator stages. The set employs three i-f transformers. Each transformer is a composite 455 kc and 10.7 mc transformer. The discriminator circuit is a standard Armstrong type with the primary and secondary of the discriminator transformer being slug tuned instead of trimmer capacitor tuned. The power line antenna is used when there is no external dipole and is utilized by attaching the blue wire on the cabinet back to the top dipole terminal. This should be disconnected when a dipole is used. For best reception with a power line antenna, the power cord should not be coiled up.

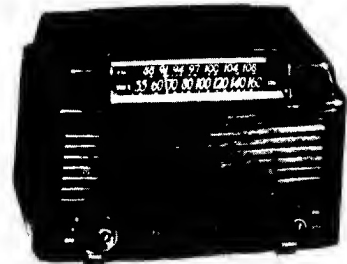
TUNING BAND:

Standard Broadcast 540-1600 kc
FM 88-108 mc

INTERMEDIATE FREQUENCY:

Standard Broadcast 455 kc
FM 10.7 mc

GENERAL ELECTRIC
RADIO
SERVICE DATA
FOR
MODELS 356, 357 AND 358



Model 356—Mahogany Plastic
Model 357—Ivory Plastic