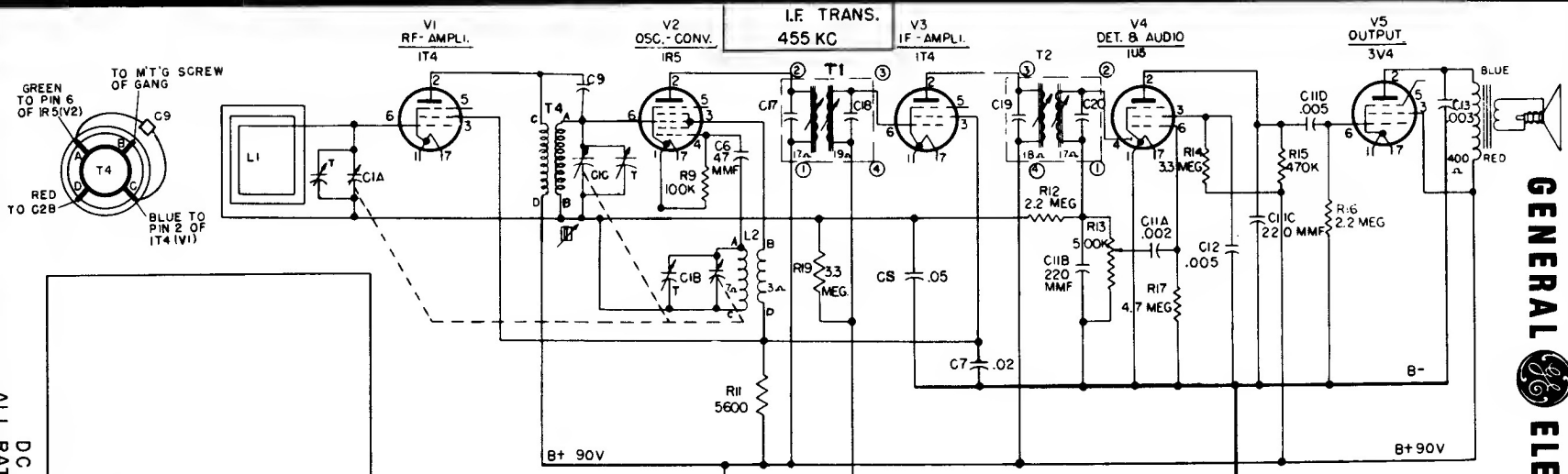
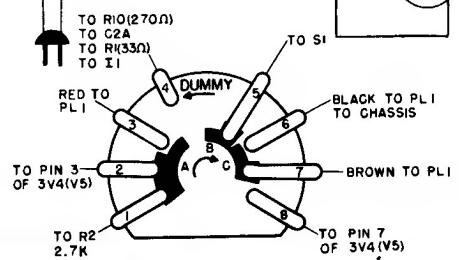
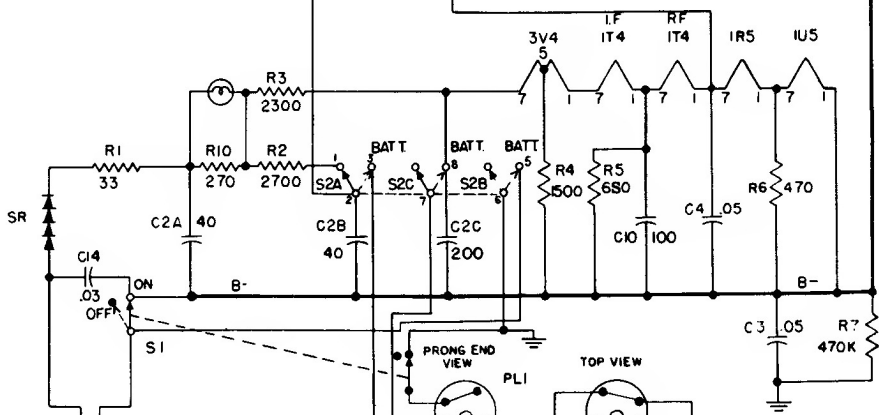
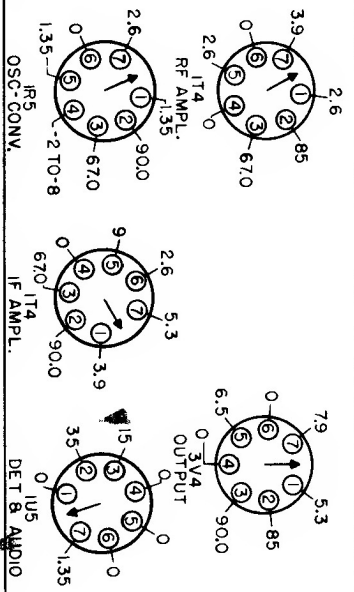


GENERAL ELECTRIC MODELS 610 AND 611



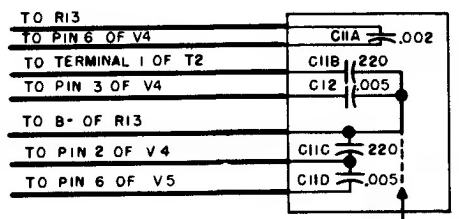
DC VOLTAGES TO B- UNLESS OTHERWISE SPECIFIED. ALL RATINGS ARE A.C. OPERATION MEASURED WITH REFERENCE TO B-. RATINGS FOR BATTERY ARE SIMILAR TO AC RATINGS. VOLTAGE IS MEASURED WITH 20,000 OHMS PER VOLT METER.

BOTTOM VIEW OF CHASSIS



SWITCH S2 IN AC-DC POSITION
VIEW FROM FRONT OF CHASSIS

NOTE: ALL CAPACITIES ARE IN MFD. UNLESS OTHERWISE INDICATED



SHIELD