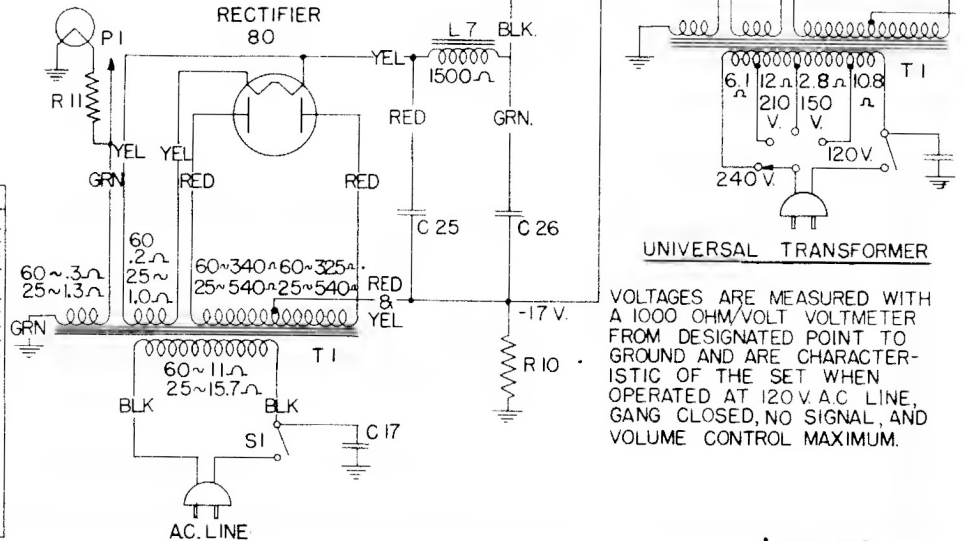


APPROX. RESIS. MEASUREMENTS

RESIS. TO GND.	TUBE	SOCKET PRONG
① 6Ω	6A7	GRID CAP
② 990,000Ω	6B7	GRID CAP
③ 170,000Ω	6B7	PRONG 4
④ 940,000Ω	41	PRONG 4

CONDITIONS OF TEST
POWER SWITCH OFF

SYMBOL	DESCRIPTION	SYMBOL	DESCRIPTION
C1	TUNING CAPACITOR	R1	VOL. CONTROL FIXED 350 TOTAL 8,000Ω
C2	TUNING	R2	CARBON RESISTOR
C3	TRIMMER	R3	↑
C4	↑	R4	↑
C5	↑	R5	↑
C6	↑	R6	↑
C7	↑	R7	↑
C8	↑	R8	↑
C9	↑	R9	CARBON RESISTOR
C11	TRIMMER	R10	WIRE WOUND RESISTOR
C12	PAPER	R11	WIRE WOUND RESISTOR
C13	↑		
C14	↑		
C16	↑		
C17	PAPER		
C20	MICA		
C21	↑		
C22	↑		
C23	MICA		
C25	DRY ELECT.		
C26	DRY ELECT.		
C27	PAPER CAPACITOR	S1	POWER SWITCH COMBINED WITH R1



I.F. 455 KC.