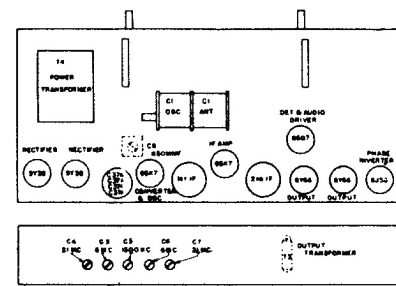


Symbol	Description	Symbol	Description	Symbol	Description
C-1	Tuning Capacitor	C-42	.01 mfd., Paper Capacitor	R-20	3.3 megohms, Carbon Resistor
C-3	"C" Band Antenna Trimmer	C-43	7-85 mmf., Antenna Trimmer	R-21	270,000 ohms, Carbon Resistor
C-4	"D" Band Antenna Trimmer	C-45	20-180 mmf., Antenna Trimmer	R-22	220,000 ohms, Carbon Resistor
C-5	"B" Band Oscillator Trimmer	C-46	20-180 mmf., Antenna Trimmer	R-23	150,000 ohms, Carbon Resistor
C-6	"C" Band Oscillator Trimmer	C-48	100-490 mmf., Antenna Trimmer	R-24	100 ohms, 3.4-W. Wire Wound
C-7	"D" Band Oscillator Trimmer	C-49	100-490 mmf., Antenna Trimmer	R-25	2400 ohms, 2-W. Carbon Resistor
C-8	"B" Band Padder	C-50	100-490 mmf., Antenna Trimmer	R-26	2200 ohms, 2.6-W Wire Wound
C-9	1600 mmf., Mica Capacitor =5%	C-52	.25 mfd., Paper Capacitor	R-28	68 ohms, Carbon Resistor
C-10	4300 mmf., Mica Capacitor =5%	C-53	.08 mfd., Paper Capacitor	R-29	47,000 ohms, Carbon Resistor
C-11	750 mmf., Silvered Mica Capacitor =5%	L-1	Beam-a-Scope	R-33	1000 ohms, Carbon Resistor
C-12	150 mmf., Mica Capacitor	L-2	"C" Band Antenna Coil	R-34	1000 ohms, Carbon Resistor
C-13	0.1 mfd., Paper Capacitor	L-3	"D" Band Antenna Coil	R-40	33 ohms, Carbon Resistor
C-14	47 mmf., Mica Capacitor	L-4	"B" Band Oscillator Coil	R-41	4.7 megohms, Carbon Resistor
C-15	0.1 mfd., Paper Capacitor	L-5	"C" Band Oscillator Coil	R-42	100,000 ohms, Carbon Resistor
C-18	47 mmf., Mica Capacitor	L-6	"D" Band Oscillator Coil	R-44	4.7 megohms, Carbon Resistor
C-20	.25 mfd., Paper Capacitor	L-7	Tuning Coil (Code—None)	R-45	15,000 ohms, 1-W. Carbon Resistor
C-24	100 mmf., Mica Capacitor	L-8, 9	Tuning Coil (Code—Red)	R-46	270 ohms, Carbon Resistor
C-25	47 mmf., Mica Capacitor	L-10, 11, 12	Tuning Coil (Code—Blue)	P-1	Pilot Light, MAZDA No. 44
C-26	.0015 mfd., Paper Capacitor	R-1	22,000 ohms, Carbon Resistor	P-2	Pilot Light, MAZDA No. 44
C-27	470 mmf., Mica Capacitor	R-2	1.0 megohm, Carbon Resistor	S-1	Antenna Band Switch
C-28	0.1 mfd., Paper Capacitor	R-4	47,000 ohms, Carbon Resistor	S-2	Oscillator Band Switch
C-31	.01 mfd., Paper Capacitor	R-5	330 ohms, Carbon Resistor	S-3	Tone Switch
C-32	.003 mfd., Paper Capacitor	R-8	47,000 ohms, Carbon Resistor	S-4	Phono. Switch
C-35	.05 mfd., Paper Capacitor	R-9	220,000 ohms, Carbon Resistor	S-5	Power Switch
C-36	.05 mfd., Paper Capacitor	R-11	2.2 megohms, Carbon Resistor	S-6	Manual Switch
C-37a	20 mfd., 25 V. Dry Electrolytic	R-13	2 megohms, Volume Control	S-7	Antenna Section, Touch Tuning Switch
C-37b	20 mfd., 250 V. Dry Electrolytic	R-15	15 ohms, Carbon Resistor	S-8	Oscillator Section, Touch Tuning Switch
C-37c	20 mfd., 250 V. Dry Electrolytic	R-17	330,000 ohms, Carbon Resistor		
C-37d	40 mfd., 250 V. Dry Electrolytic	R-18	68,000 ohms, Carbon Resistor		
C-38	.02 mfd., Paper Capacitor				



Trimmer Location

General Electric

I.F. 455 KC.

MODEL H-87