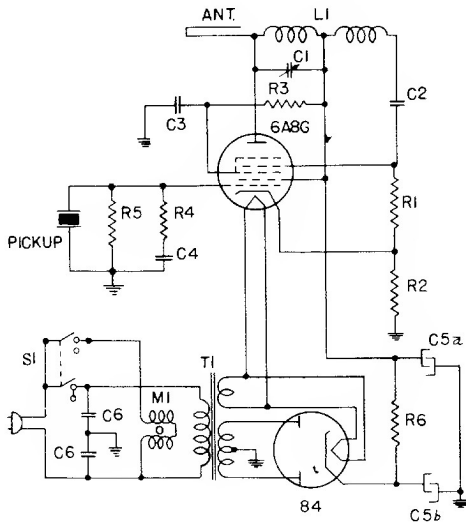
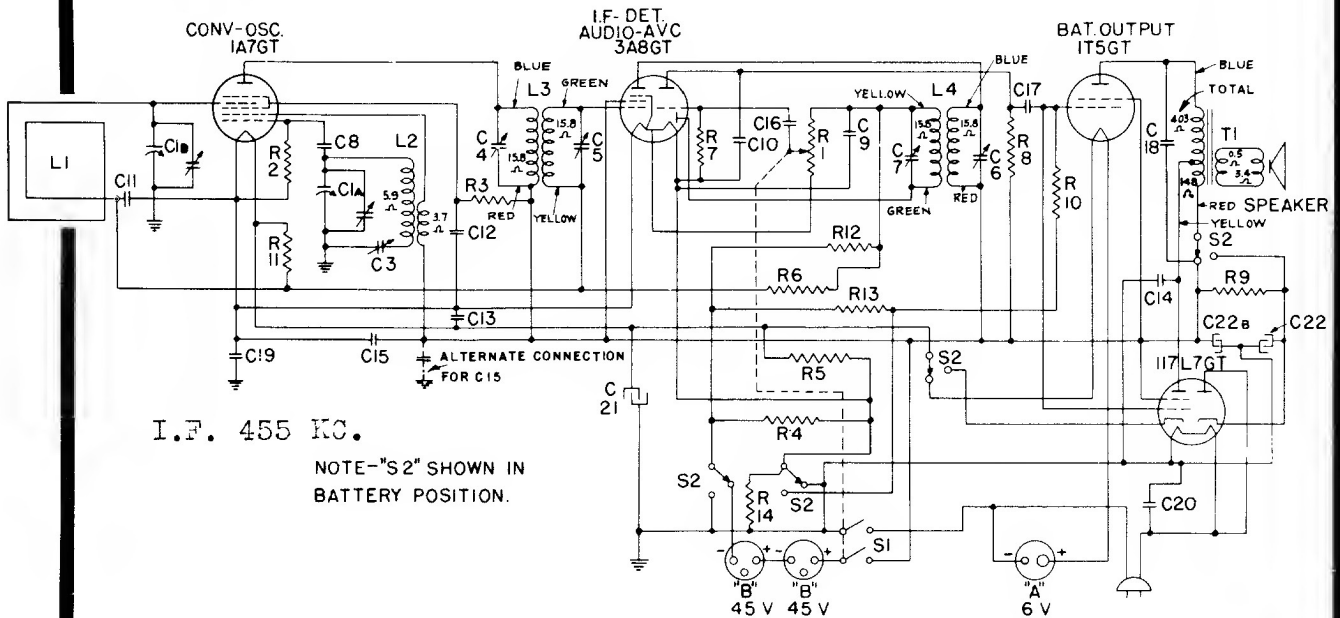


General Electric Model HB-412

Symbol	Description	Symbol	Description	Symbol	Description
C-1A	Oscillator section tuning condenser	C-19	0.2 mfd. paper capacitor	R-6	2.2 megohms carbon resistor
C-1B	Antenna section tuning condenser	C-20	.01 mfd. line capacitor	R-7	15 megohms carbon resistor
C-3	Oscillator padding capacitor	C-21	100 mfd. 5 V. dry electrolytic	R-8	1.0 megohm carbon resistor
C-8	47 mmf. mica capacitor	C-22A	40 mfd. 150 V. dry electrolytic	R-9	1800 ohms carbon resistor
C-9	220 mmf. mica capacitor	C-22B	20 mfd. 150 V. dry electrolytic	R-10	470,000 ohms carbon resistor
C-10	220 mmf. mica capacitor	L-1	Beam-a-Scope	R-11	3.9 megohms carbon resistor
C-11	.05 mfd. paper capacitor	L-2	Oscillator coil	R-12	680,000 ohms carbon resistor
C-12	0.1 mfd. paper capacitor	L-3	1st I.F. transformer	R-13	1.5 megohms carbon resistor
C-13	0.1 mfd. paper capacitor	L-4	2nd I.F. transformer	R-14	27 ohms carbon resistor
C-14	220 mmf. mica capacitor	R-1	1.0 megohm volume control	S-1	Power switch (on volume control)
C-15	0.1 mfd. paper capacitor	R-2	220,000 ohms carbon resistor	S-2	AC-DC or Battery switch
C-16	.002 mfd. paper capacitor	R-3	47,000 ohms carbon resistor	T-1	Output transformer
C-17	.01 mfd. paper capacitor	R-4	150 ohms carbon resistor		
C-18	.004 mfd. paper capacitor	R-5	560 ohms carbon resistor		



General Electric Model HM-21

Symbol	Description
C-1	300-850 mmf. tuning trimmer
C-2	100 mmf. mica capacitor
C-3	0.1 mfd. paper capacitor
C-4	.005 mfd. paper capacitor
C-5a	10 mfd. dry electrolytic
C-5b	10 mfd. dry electrolytic
C-6	.01-.01 mfd. line capacitor
L-1	Oscillator coil
M-1	Motor
R-1	120,000 ohms carbon resistor
R-2	1,200 ohms carbon resistor
R-3	47,000 ohms carbon resistor
R-4	47,000 ohms carbon resistor
R-5	1.0 megohms carbon resistor
R-6	6,800 ohms carbon resistor
S-1	Power switch
T-1	Power transformer