

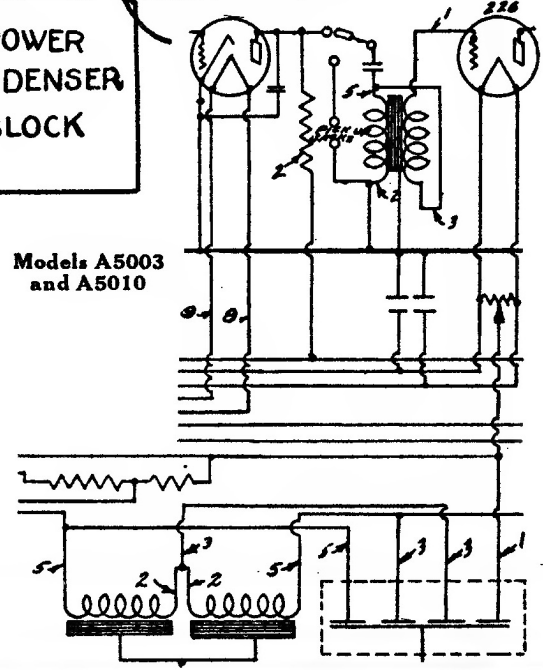
Models 5091 (60 Cycle) and A5004 (25 Cycle) **General Motors**

The Circuit incorporates four balanced, tuned stages of radio frequency amplification, a semi-tuned antenna input system, detector, one stage of audio frequency amplification and one stage of push-pull audio frequency amplification. (Two 245 Power Tubes.)

An output push-pull transformer is used in order to match the impedance of the voice coil of the dynamic speaker with the output of the power tubes.

A switch is connected in the plate circuit of the second radio frequency tube, termed the soft and loud switch, which breaks the circuit, thereby reducing amplification in the first two tubes and improving the tone quality of local reception.

A phonograph pick-up unit may be permanently connected by inserting the tips in jacks provided for this purpose. A switch is provided which connects the pick-up to the first audio transformer, or connects the plate lead of the transformer to the plate of the detector, depending on whether radio reception or phonograph music is desired.



Models A5003 and A5010