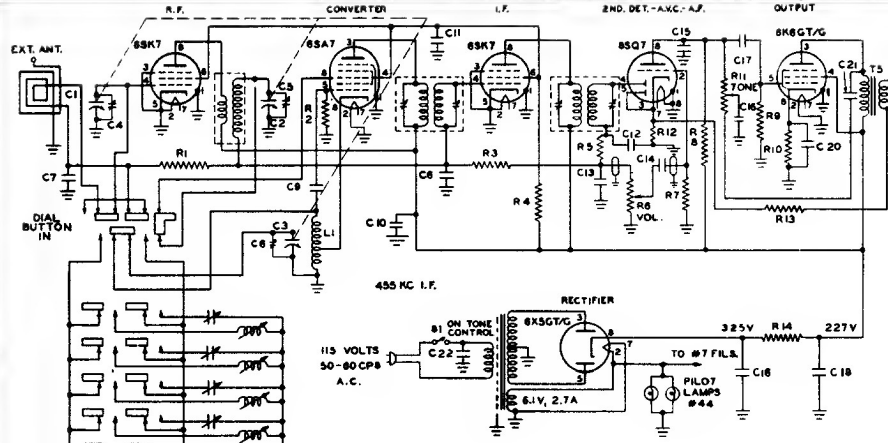


C7, C8	.05 Mfd, 200 Volt, Tubular Paper	4100
C9, C12, C13, C15	100 Mmf. ±20%, Mica	4000
C10, C11, C23	.05 Mfd, 400 Volt, Tubular Paper	4101
C14, C18	.005 Mfd, 600 Volt, Tubular Paper	4102
C17	.01 Mfd, 600 Volt, Tubular Paper	4103
C18-C19-C20	Dry Electrolytic Capacitors (20-20-20 Mfd 450-450-25 Volt)	4200
C21	.001 Mfd, 600 Volt, Tubular Paper	4104
C22	.01 Mfd, 600 Volt, Tubular Paper (Metal Can)	4105
L1	Oscillator Coil	5200
L5	Loudspeaker, 4" x 6" 11500-Ohm Field	9000
R1, R8	.22 Megohm ±20%, ½ Watt	4500
R2	22,000 Ohm ±20%, ½ Watt	4501
R3	2.2 Megohm ±20%, ½ Watt	4502
R4	10,000 Ohm ±10%, 2 Watt	4503
R5	47,000 Ohm ±20%, ½ Watt	4504
R6	.5 Megohm Potentiometer (Volume)	4804
R7	10 Megohm ±20%, ½ Watt	4505
R9	.47 Megohm ±20%, ½ Watt	4506
R10	560 Ohm ±10%, ½ Watt	4507
R11	.25 Megohm Potentiometer With Switch (Tune)	4508
R12	47 Ohm ±20%, ½ Watt	4505
R13	330 Ohm ±20%, ½ Watt	4509

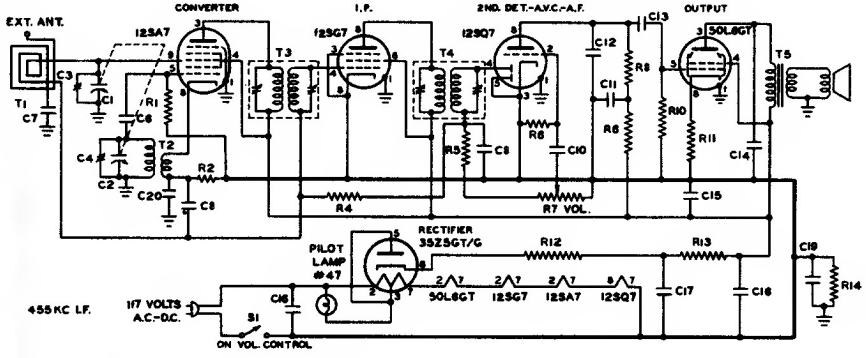


Hoffman
RADIO CORP.
LOS ANGELES, CALIFORNIA

SYMBOL	DESCRIPTION	
C1-C2-C3	Three-Section Variable (388-388-180 Mmf.)	
C4, C5, C6	Trimmers: Part of Variable Condenser	
C7, C8	.05 Mfd, 200 Volt, Tubular Paper	
C9, C12, C13, C15	100 Mmf. ±20%, Mica	
C10-C11	.05 Mfd, 400 Volt, Tubular Paper	
C14, C16	.005 Mfd, 600 Volt, Tubular Paper	
C17	.01 Mfd, 600 Volt, Tubular Paper	
C18-C19-C20	Dry Electrolytic Condenser (20-20-20 Mfd 450-450-25 Volt)	
C21	.001 Mfd, 600 Volt, Tubular Paper	
C22	.01 Mfd, 600 Volt, Tubular Paper (Metal Can)	
C23	500 Mmf 5%, Silver Mica	
L1	Oscillator Coil	
L5	Loudspeaker, 5" P.M.	
R1, R8	.22 Megohm ±20%, ½ Watt	
R2	22,000 Ohm ±20%, ½ Watt	
R3	2.2 Megohm ±20%, ½ Watt	
R4	10,000 Ohm ±10%, 2 Watt	
R5	47,000 Ohm ±20%, ½ Watt	
R6	.5 Megohm Potentiometer (Volume)	
R7	10 Megohm ±20%, ½ Watt	
R9	.47 Megohm ±20%, ½ Watt	
R10	560 Ohm ±10%, ½ Watt	
R11	.25 Megohm Potentiometer With Switch (Tune)	
R12	47 Ohm ±20%, ½ Watt	
R13	330 Ohm ±20%, ½ Watt	
R14	1500 Ohm ±5%, 6½ Watt	

MODEL A 301 CHASSIS No. 101S
Hoffman Model 301 with Chassis 101S is electrically identical to Chassis 100, except for the speaker used and the use of a 1500 ohm resistor instead of the 1500 ohm speaker field winding.

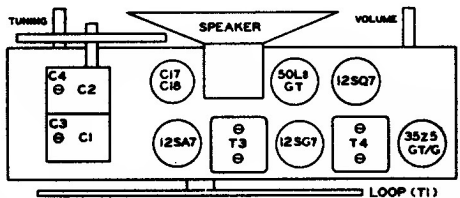
Hoffman
RADIO CORP.
LOS ANGELES, CALIFORNIA



SYMBOL	DESCRIPTION	HOFFMAN NO.
C1-C2	Two-Section Variable (388-180 Mmf.)	4401
C3, C4	Trimmers: Part of Variable Cond.	
C5	100 Mmf. ±20%, Mica	4000
C7, C10, C13	.005 Mfd, 600 Volt, Tubular Paper	4102
C8, C11, C12	.05 Mfd, 200 Volt, Tubular Paper	4100
C9, C15	.270 Mmf. ±20%, Mica	4001
C14	.02 Mfd, 400 Volt, Tubular Paper	4106
C16	.01 Mfd, 600 Volt, Tubular Paper	4103
C17-C18	Dry Electrolytic (30-50 Mfd/150V)	4201
C19, C20	.1 Mfd, 200 Volt, Tubular Paper	4111
L5	5" P.M. Loudspeaker	9009
R1	22,000 Ohm ±20%, ½ Watt	4501
R2	68 Ohm ±20%, ½ Watt	4524
R3	2.2 Megohm ±20%, ½ Watt	4502
R4	47,000 Ohm ±20%, ½ Watt	4504
R5	10 Megohm ±20%, ½ Watt	4505
R6	.5 Megohm Pot. with Switch (Volume)	4802
R7	10 Megohm ±20%, ½ Watt	4511
R8	.22 Megohm ±20%, ½ Watt	4500
R9	.47 Megohm ±20%, ½ Watt	4506
R10, R14	150 Ohm ±20%, ½ Watt	4510
R11	47 Ohm ±20%, ½ Watt	4508
R12	47 Ohm ±20%, ½ Watt	4508
R13	500 Ohm ±10%, 5 Watt, W.W.	4700
S1	On-Off Switch (On Volume Control)	
T1	Antenna Loop	5207
T2	Oscillator Coil	5208
T3	Input I.F. Transformer (455 K.C.)	5205
T4	Output I.F. Transformer (455 K.C.)	5206
T5	Audio Output Transformer	5101

MODEL A 200
CHASSIS NO. 103

MODEL A 302
CHASSIS NO. 103



Hoffman
RADIO CORP.
LOS ANGELES, CALIFORNIA