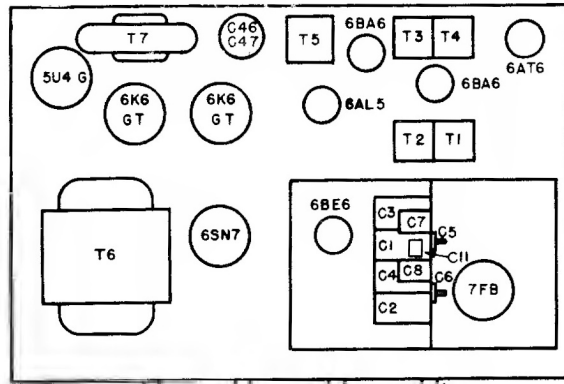
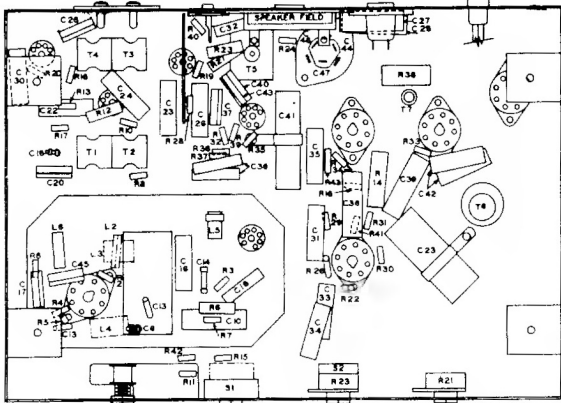


HOFFMAN RADIO CORPORATION

MODELS B508, B509 and B510

CHASSIS 129



SYMBOL	DESCRIPTION	HOFFMAN NO.	LIST PRICE*
C1, C2, C3, C4	4 Section Variable	4409	\$3.96
C5, C6	Trimmer (F.M. Section)	4308	.80
C7, C8	Trimmer (A.M. Section)	4313	.20
C9, C18	8 Mmf. $\pm 10\%$	4109	.24
C10, C23	.05 Mmf. $\pm 20\%$	4019	.10
C11	1.5 Mmf. $\pm 20\%$	4036	.30
C12	220 Mmf. $\pm 20\%$	4021	1.00
C13	22 Mmf. $\pm 10\%$	4012	.18
C14, C26	100 Mmf. $\pm 10\%$	4011	.38
C15, C17, C45	650 Mmf. $\pm 20\%$	4112	.19
C16, C19, C21, C22, C24, C29, C30, C31	.01 Mmf. 400 V.		
C20, C32	2300 Mmf. $\pm 5\%$	4006	.63
C25	10 Mmf. 450 V.	4203	1.24
C27, C28	.01 Mmf. 600 V.	4103	.18
C33	.02 Mmf. 400 V.	4106	.19
C34	.005 Mmf. 600 V.	4102	.21
C35	.1 Mmf. 200 V.	4111	.22
C36, C42	.002 Mmf. 600 V.	4118	.20
C37, C40, C43	270 Mmf. $\pm 20\%$	4001	.22
C38, C39	.05 Mmf. 400 V.	4101	.23
C41	5 Mmf. 50 V.	4209	.84
C44	20 Mmf. 25 V.	4200	2.28
C46, C47	20 Mmf. 450 V.		
R1, R33, R34	47 Meg. $\pm 20\%$	4506	.05
R2, R7, R28	22000 Ohm $\pm 20\%$	4501	.05
R3	22 Ohm $\pm 20\%$	4560	.13
R4	68 Ohm $\pm 20\%$	4524	.05
R5	1200 Ohm $\pm 10\%$	4553	.05
R6	15000 Ohm $\pm 20\%$	4539	.08
R8, R9, R13, R24	1500 Ohm $\pm 20\%$	4534	.05
R10, R19	56 Ohm $\pm 10\%$	4561	.05
R11, R15, R20	2.2 Meg. $\pm 20\%$	4502	.05
R12, R23	33000 Ohm $\pm 20\%$	4556	.60
R14	2200 Ohm $\pm 20\%$	4540	.08
R16, R17	.1 Meg. $\pm 20\%$	4511	.05
R18, R40, R41	2.2 Meg. $\pm 20\%$	4500	.05
R21	5 Meg. Pot. (Volume Control)	4804	.80
R22	1.0 Meg. $\pm 20\%$	4513	.05
R25	25 Meg. Pot. (Tone Control)	4805	1.05
R26	2200 Ohm $\pm 20\%$	4512	.05
R27	120 Ohm $\pm 10\%$	4546	.05
R29	4700 Ohm $\pm 20\%$	4543	.04
R30, R31	47000 Ohm $\pm 10\%$	4559	.40
R32	47000 Ohm $\pm 20\%$	4504	.05
R35, R39	390 Ohm $\pm 10\%$	4549	.05
R36, R37	6800 Ohm $\pm 10\%$	4557	.10
R38	400 Ohm $\pm 20\%$	4517	.05
L1	A.M. Loop Antenna	5279	1.80
L2	F.M. Antenna Primary Coil	5281	
L3	F.M. Antenna Secondary Coil	5283	
L4	F.M. Oscillator Coil	5280	
L5	A.M. Oscillator Coil	5282	
L6	Filament Choke	5266	.60
T1	1st. F.M. I.F. Transformer	5274	2.10
T2	1st. A.M. I.F. Transformer	5276	2.00
T3	2nd. F.M. I.F. Transformer	5275	2.10

