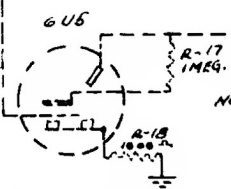


SHORT WAVE (S.W.) 23 - 5.8 M.C.
 BROADCAST (B.C.) 1720 - 545 M.C.

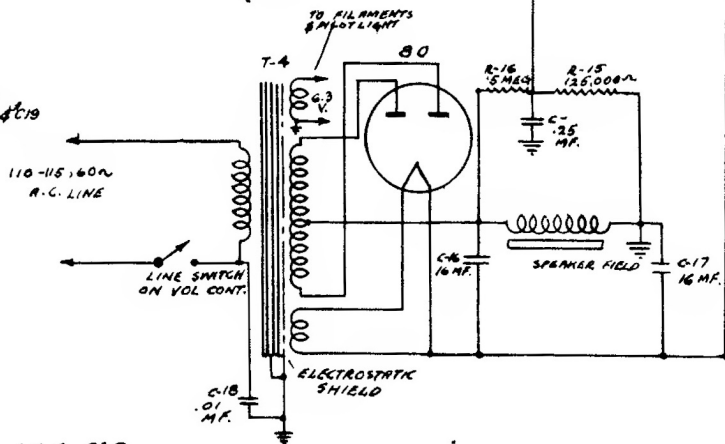


NOTE: 6U5 USED ONLY ON MODELS #269 & C19

- C-1 .006 MF. 600V.
- C-2 .006 MF. 600V.
- C-3 .05 MF. 200 V.
- C-4 15 M.MF. MICA
- C-5 500 M.MF. MICA
- C-6 .1 MF. 400 V.
- C-7 .02 MF. 200V.
- C-8 .1 MF. 400 V.
- C-9 250 M.MF. MICA
- C-10 .02 MF. 200 V.
- C-11 .03 MF. 400 V.
- C-12 .85 MF. 200 V.
- C-13 .01 MF. 400 V.
- C-14 250 M.MF. MICA
- C-15 .01 MF. 400 V.
- C-16 16 MF. 450 M.V.
- C-17 16 MF. 450 M.V.
- C-18 .01 MF. 400V.
- C-19 .05 MF. 200 V.
- C-20 .002 MF. 5% MICA
- C-21 .003 MF. 5% MICA
- C-22 30 M.MF. TRIMMER
- C-23 } DUAL 12 M.MF. TRIMMER COND.
- C-24 }
- C-25 12 M.MF. TRIMMER COND.
- C-26 500 M.MF. PADDING COND.
- C-27 2 GANG 450 M.MF. VAR. COND # 2-136
- C-28 }

- R-1 100,000 Ω
- R-2 150 Ω
- R-3 50,000 Ω
- R-4 10,000 Ω
- R-5 30,000 Ω
- R-6 25,000 Ω/WATT
- R-7 400 Ω
- R-8 2500 Ω
- R-9 1MEG
- R-10 .5MEG
- R-11 2000 Ω
- R-12 1MEG VOL. CONTR. #B-1398
- R-13 250,000 Ω
- R-14 .5MEG.
- R-15 125,000 Ω
- R-16 .5MEG
- R-17 1MEG. IN 6U5 SOCKET
- R-18 1000 Ω (OPTIONAL)
- R-19 100 Ω

- L-1 8 MH. CHOME
- L-2 }
- L-3 } 2 BAND ANT COIL #1, 217
- L-4 }
- L-5 }
- L-6 } 2 BAND OSC. COIL #1, 218
- L-7 }
- L-8 SPEAKER FIELD



IF 456 KC.

- T-1 D.T. 1F. INPUT #1, 235-A
- T-2 S.T. 1F. OUTPUT #1, 200
- T-3 OUTPUT TRANS. ON SPEAKER
- T-4 POWER TRANS. #9, 152 500VA TAPPED #6, 153

Lafayette Radio Corp.
 Radio Wire Television, Inc.
 Models C-16, C-19, 259, 269