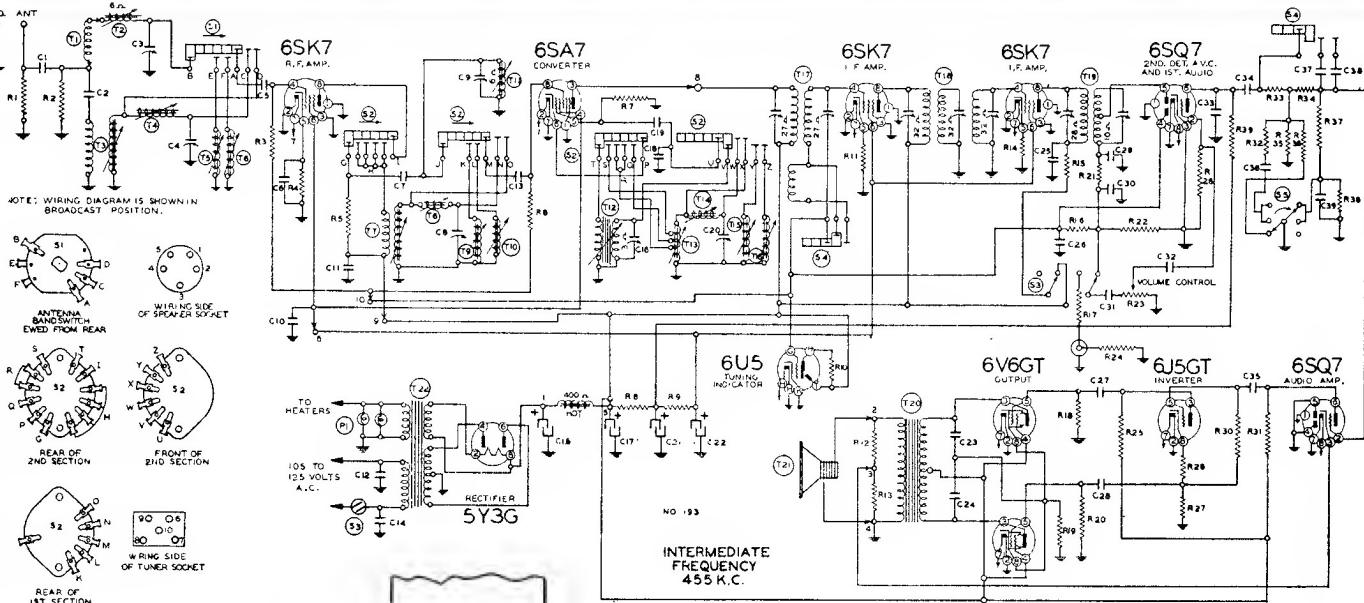
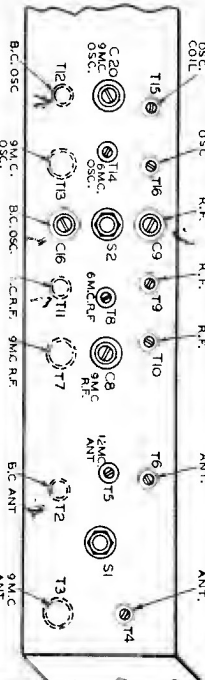
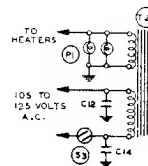
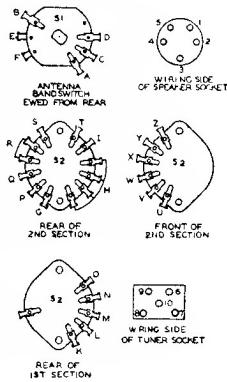


- R1 BE130232 25M ohm—1/4 w.
- R2 BE130232 25M ohm—1/4 w.
- R3 BE13019 1 megohm—1/4 w.
- R4 BE130239 250 ohm—1/4 w.
- R5 BE130218 5M ohm—1/4 w.
- R6 BE13011 1 megohm—1/4 w.
- R7 BE130232 25M ohm—1/4 w.
- R8 BE130318 6M ohm—2 watt
- R9 BE130319 10M ohm—2 watt
- R10 BE13013 1 megohm in tun
- R11 BE13013 1100 ohm—1/4 w.
- R12 BE13062 10M ohm—1/4 w.
- R13 BE130235 1500 ohm—1/4 w.
- R14 BE130192 2M ohm—1/4 w.
- R15 BE130192 2M ohm—1/4 w.
- R16 BE13019 1 megohm—1/4 w.
- R17 BE1303 500M ohm—1/4 w.
- R18 BE1303 500M ohm—1/4 w.
- R19 BE130317 250 ohm—2 watt
- R20 BE1303 500M ohm—1/4 w.
- R21 BE13091 50M ohm—1/4 w.
- R22 BE130316 120M ohm—1/4 w.
- R23 BE101229 500M ohm volume
- R24 BE1303 500M ohm—1/4 w.
- R25 BE13094 50M ohm—1/4 w.
- R26 BE130218 5M ohm—1/4 w.
- R27 BE13094 50M ohm—1/4 w.
- R28 BE130257 5 megohm—1/4 w.
- R29 BE130172 250M ohm—1/4 w.
- R30 BE1303 500M ohm—1/4 w.
- R31 BE130172 250M ohm—1/4 w.
- R32 BE130232 25M ohm—1/4 w.
- R33 BE13080 150M ohm—1/4 w.
- R34 BE130309 350M ohm—1/4 w.
- R35 BE130172 250M ohm—1/4 w.
- R36 BE13066 75M ohm—1/4 w.
- R37 BE13080 150M ohm—1/4 w.
- R38 BE130146 2 megohm—1/4 w.



NOTE: WIRING DIAGRAM IS SHOWN IN BROADCAST POSITION.

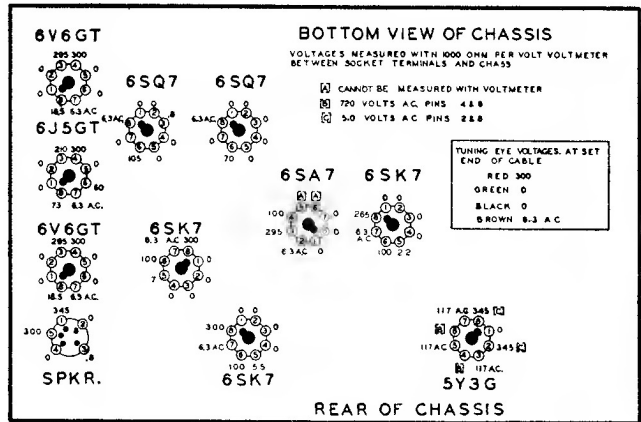


- C1 BE1292 .0005 mica
- C2 BE10047 .002 x 600 v.
- C3 BE124143 B.C. Antenna Trimmer
- C4 BE124143 9 mc. Antenna Trimmer
- C5 BE1292 .0005 mica
- C6 BE10020 .1 x 200 v. tubular
- C7 BE129168 .00001 mica
- C8 BE124138 9 mc. R.F. Trimmer
- C9 BE124139 B.C. R.F. Trimmer
- C10 BE10074 .1 x 400 v.
- C11 BE10074 .1 x 400 v.
- C12 BE10061 .02 x 600 v.
- C13 BE1292 .0005 mica
- C14 BE10061 .02 x 600 v.
- C15 BE119112 30.0 mfd. lytic
- C16 BE124144 B.C. Oscillator Trimmer
- C17 BE119112 30.0 mid. lytic x 450 w.v.
- C18 BE129167 .0002 silver mica
- C19 BE129165 .00005 mica
- C20 BE124145 9 mc. oscillator trimmer
- C21 BE119112 10.0 mid. lytic
- C22 BE11969 16 mfd. x 350 w.v.
- C23 BE10065 .015 x 600 v.
- C24 BE10065 .015 x 600 v.
- C25 BE1001 .1 x 400 v.
- C26 BE10020 .1 x 200 v.
- C27 BE10013 .05 x 400 v.
- C28 BE1009 .05 x 200 v.
- C29 BE1295 .0001 mica
- C30 BE1295 .0001 mica
- C31 BE10020 .1 x 200 v.
- C32 BE10019 .006 x 600 v.
- C33 BE12912 .00025 mica
- C34 BE1001 .1 x 400 v.
- C35 BE10013 .05 x 400 v.
- C36 BE100118 .008 x 600 v.
- C37 BE12938 .00005 mica
- C38 BE129166 .000125 mica

- C39 BE10037 .003 x 600 v.
- C3, C4 in same unit
C15, C17 and C21 are in same unit

PARTS

- T1 BE111200 Loop Antenna Assembly
- T2 BE111195 B.C. Antenna Coil
- T3 BE111190 9 mc. Antenna Coil
- T4 BE111189 6 mc. Antenna Coil
- T5 BE111191 12 mc. Antenna Coil
- T6 BE111192 15 mc. Antenna Coil
- T7 BE10939 9 mc. R.F. Coil
- T8 BE10958 6 mc. R.F. Coil
- T9 BE10960 12 mc. R.F. Coil
- T10 BE10961 15 mc. R.F. Coil
- T11 BE10962 B.C. R.F. Coil
- T12 BE110161 B.C. Oscillator Coil
- T13 BE110157 9 mc. Oscillator Coil
- T14 BE110156 6 mc. Oscillator Coil
- T15 BE110158 12 mc. Oscillator Coil
- T16 BE110159 15 mc. Oscillator Coil
- T17 BE108181 Input I.F. Coil—455 kc.
- T18 BE108155B Interstage I.F. Coil
- T19 BE108182 Output I.F. Coil—455 kc.
- T20 BE105115 Output Transformer
- T21 BE114207 12 in. Dynamic Speaker
- T22 BE104217 Power Transformer—50-60 cycles
- BE104218 Power Transformer—25 cycle
- S1 BE125121 Antenna Bandswitch
- S2 BE125122 R.F. Oscillator Bandswitch
- S3 BE125125 On-off Radio Phono Switch
- S4 BE125124 Treble Switch
- S5 BE125123 Bass Switch
- P1 BE10794 2 6-8 volts pilot light T4



MODEL 04BR-1105A

WARDS AIRLINE