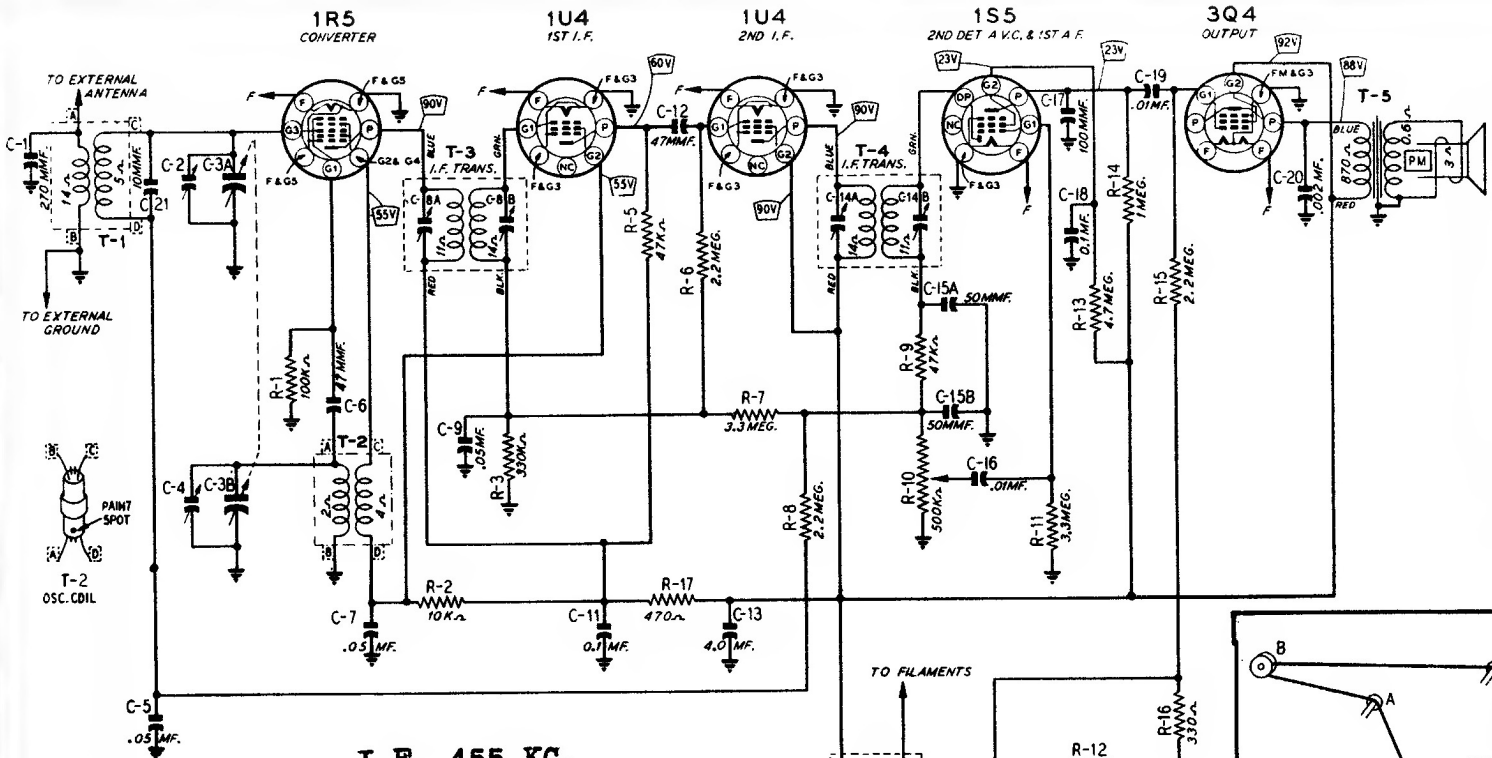
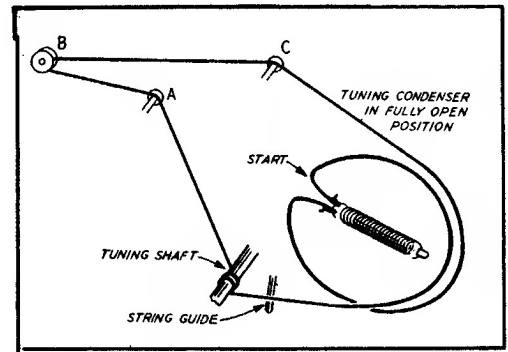
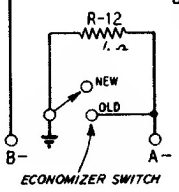
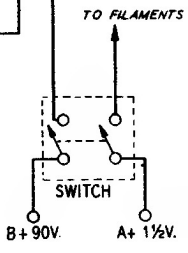
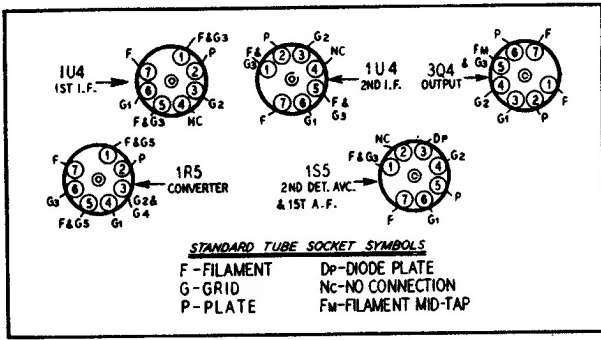


MODEL 64 WG-1207B

WARDS



I.F. 455 KC.



Socket voltages are shown on the schematic diagram at the tube socket terminals. All voltages are between the socket terminal and the chassis.

All readings, except those for the 1S5 tube, were taken with a 1000 ohm-per-volt meter and read on a 500 volt scale. The plate and screen voltages for the 1S5 tube were read with a vacuum tube voltmeter. Conditions of measurement are:

- Battery voltages under load.....B, 90 volts  
A, 1½ Volts
- Volume control.....maximum
- Signal input.....none

