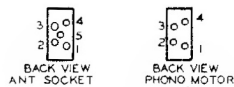
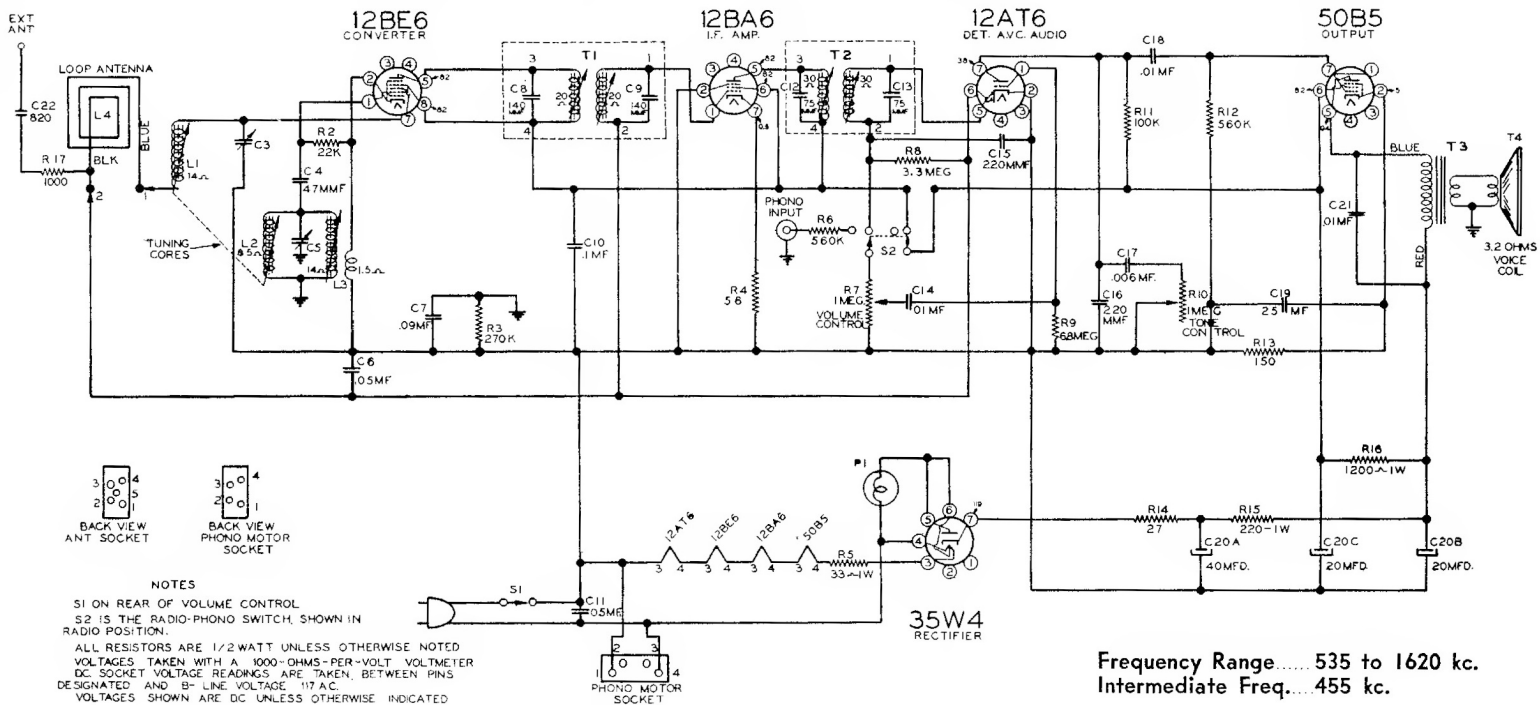
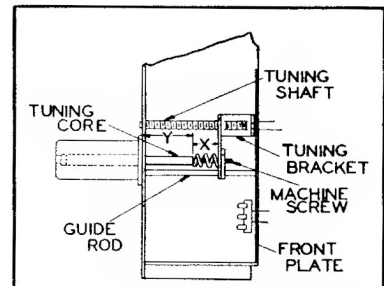
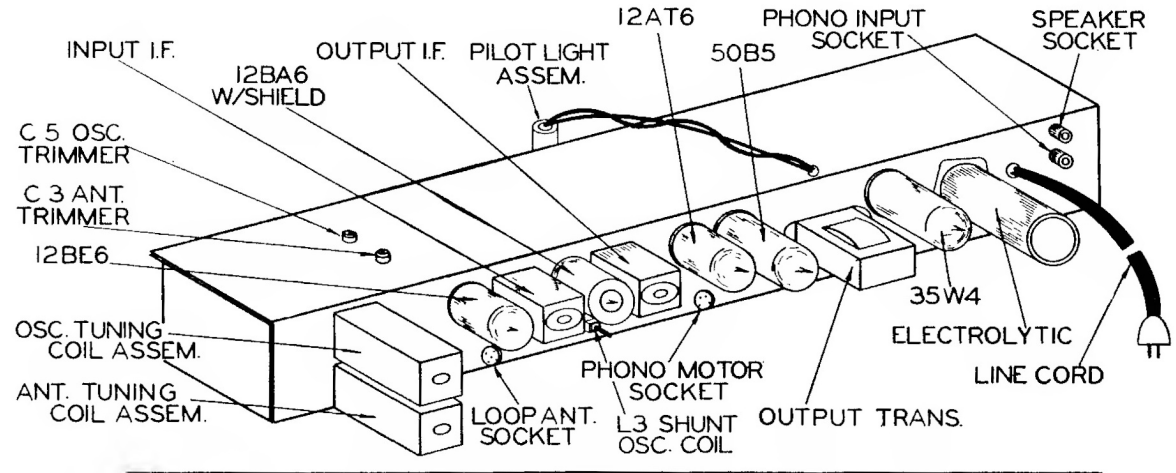


MODEL 84BR-2003C



NOTES  
 S1 ON REAR OF VOLUME CONTROL  
 S2 IS THE RADIO-PHONO SWITCH, SHOWN IN RADIO POSITION.  
 ALL RESISTORS ARE 1/2 WATT UNLESS OTHERWISE NOTED  
 VOLTAGES TAKEN WITH A 1000-OHMS-PER-VOLT VOLTMETER  
 DC SOCKET VOLTAGE READINGS ARE TAKEN BETWEEN PINS DESIGNATED AND 'B' LINE VOLTAGE. '1'7 A.C. VOLTAGES SHOWN ARE DC UNLESS OTHERWISE INDICATED

Frequency Range..... 535 to 1620 kc.  
 Intermediate Freq..... 455 kc.



BOTH TUNING CORES PROTRUDE 1 1/2" OUT OF BASE OF TUNING COIL ASSEMBLIES, WHEN THE TUNING BRACKET IS AGAINST THE FRONT PLATE AS SHOWN IN DRAWING, (DIMENSION Y).  
 THE TOTAL LENGTH OF MACHINE SCREW IS 3/4 IN DIMENSION X- APPROX. 7/16 IN.

NOTE: On some sets, the loop antenna socket is eliminated and leads are brought out thru the hole.