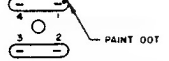
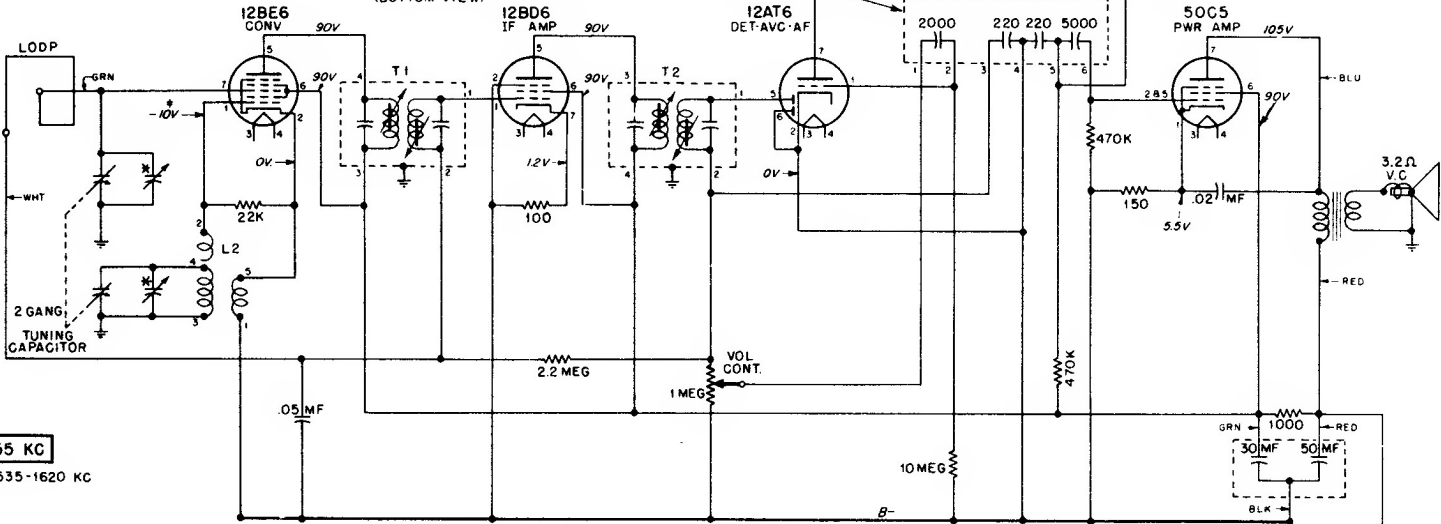


MOTOROLA, INC.

T1 & T2 CONNECTIONS



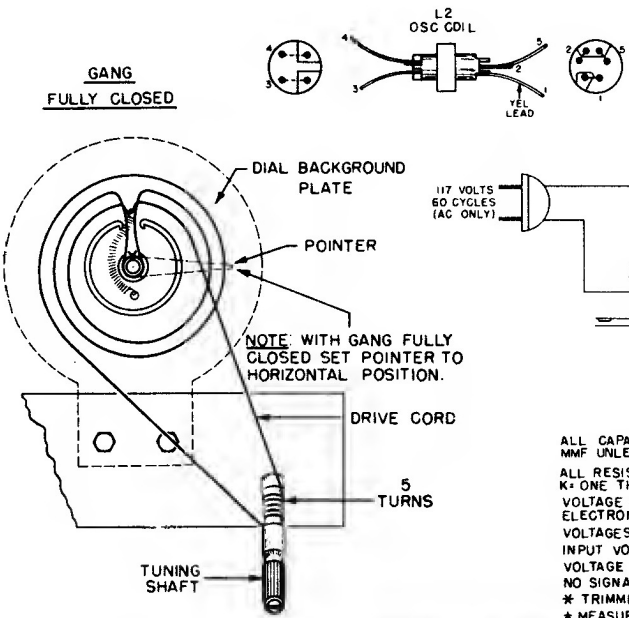
(BOTTOM VIEW)



IF = 455 KC

FREQ RANGE 535-1620 KC

GANG FULLY CLOSED



NOTES
 ALL CAPACITORS INDICATED IN MMF UNLESS OTHERWISE SPECIFIED.
 ALL RESISTORS INDICATED IN OHMS.
 K = ONE THOUSAND (1000) OHMS
 VOLTAGE MEASUREMENTS MADE WITH ELECTRONIC TYPE VOLTMETER
 VOLTAGES TAKEN BETWEEN POINT INDICATED AND B-
 INPUT VOLTAGE 117V.AC
 VOLTAGE TOLERANCE ±10%
 NO SIGNAL INPUT.
 * TRIMMERS ON GANG
 * MEASUREMENT MADE WITH GANG FULLY OPEN.

MODELS
52C6
52C7
52C8
CHASSIS
HS-310