

I.F. = 262 KC
 FREQUENCY RANGE
 545 KC TO 1600 KC

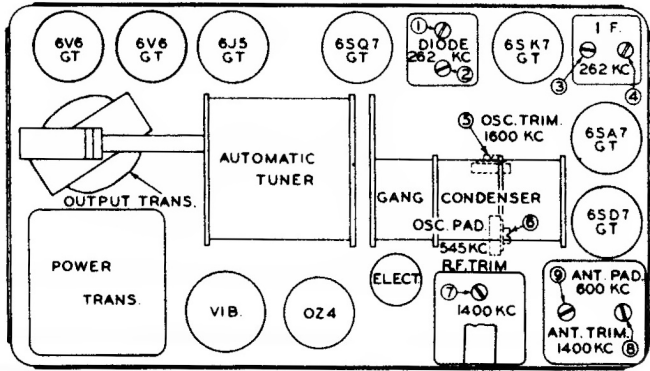
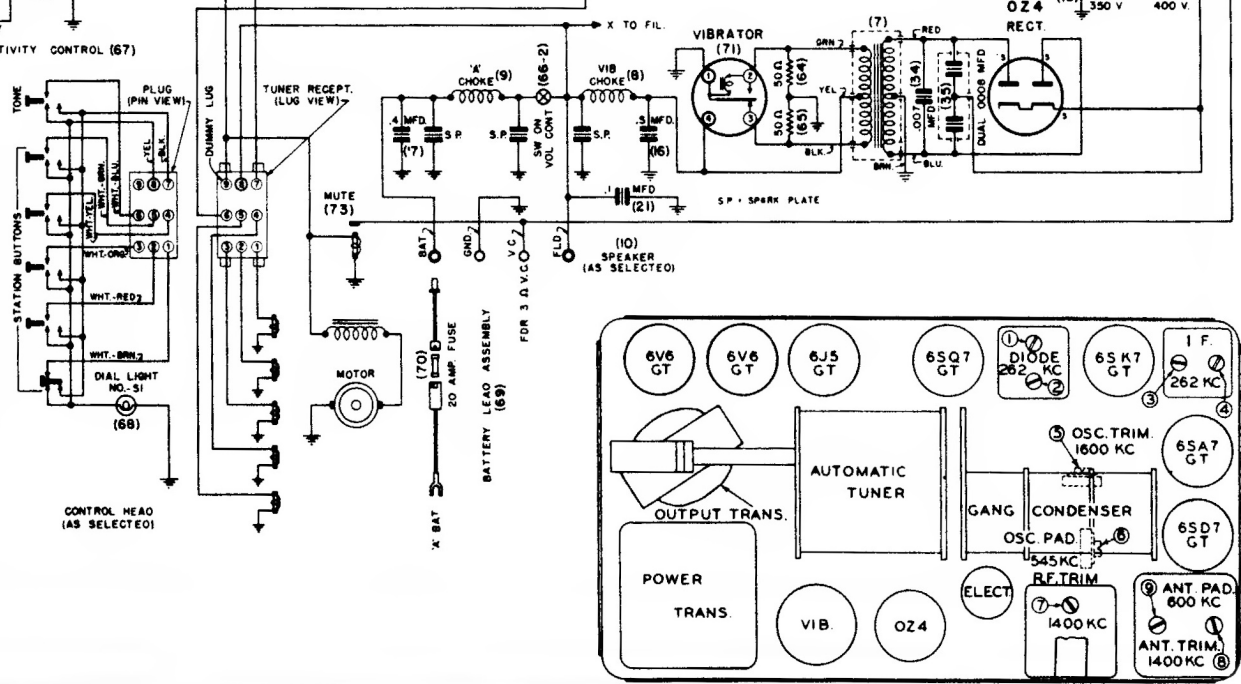
OSC. COIL (3)
 STREET CAR
 CITY
 SENSITIVITY CONTROL (67)

Motorola

VOLTAGE CHART

TUBE	PLATE TO GND.	SCREEN TO GND.	CATH. TO GND.
6S07GT	175 V.	65 V.	2.5 V.
6SA7GT	175 V.	75 V.	2.5 V.
6SK7GT	175 V.	75 V.	6.0 V.
6SQ7GT	70 V.	—	0
6J5GT	70 V.	—	65 V.
6V6GT	260 V.	245 V.	16 V.
6V6GT	260 V.	245 V.	16 V.
OZ4	AC	—	265 V.

NOTE: ALL VOLTAGES MEASURED ON A 1000 OHM PER VOLT VOLTMEETER SENSITIVITY CONTROL IN COUNTY POSITION. CURRENT 7.0 AMPS. AT 6.3 VOLTS. MAXIMUM POWER OUTPUT 9 WATTS.



Model 551