

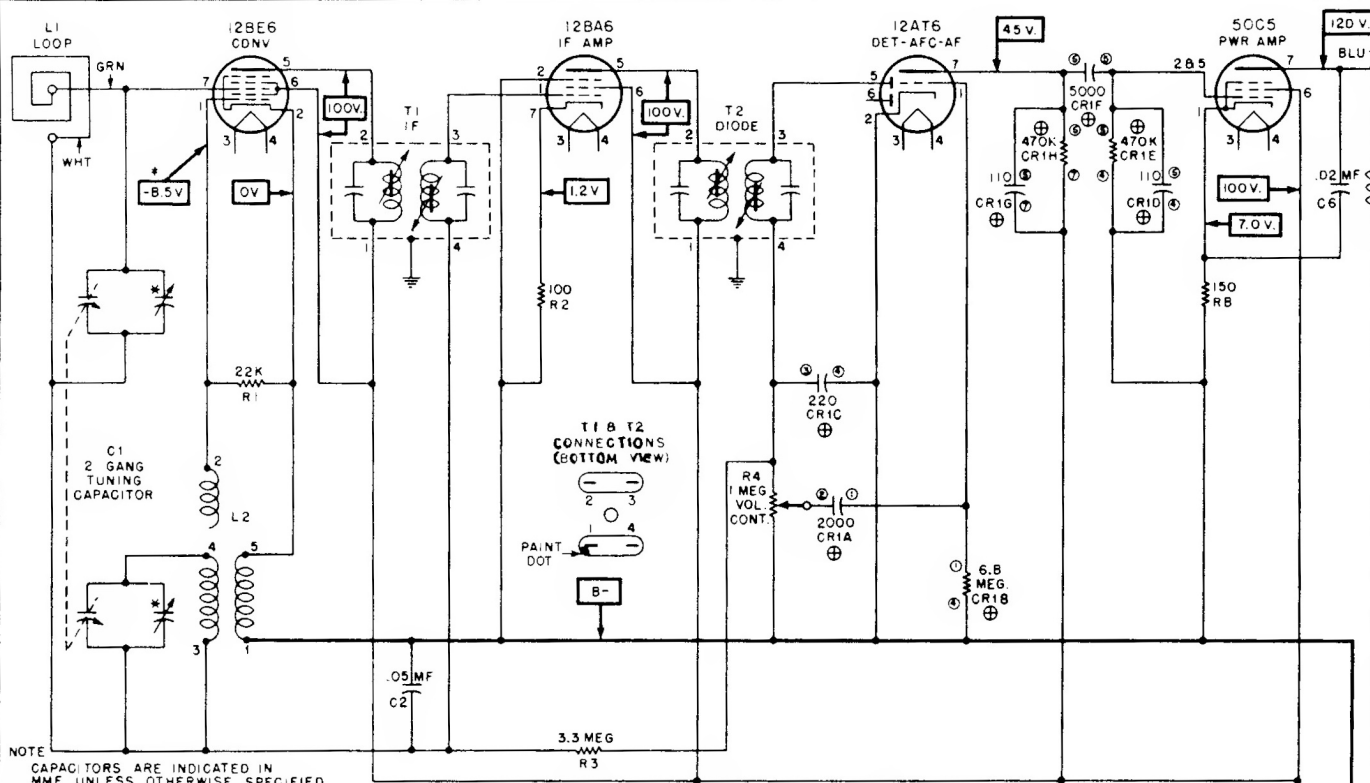
MODELS
5X11U
5X12U
5X13U
CHASSIS
HS-243

MODELS
5H11U
5H12U
5H13U
CHASSIS
HS-244

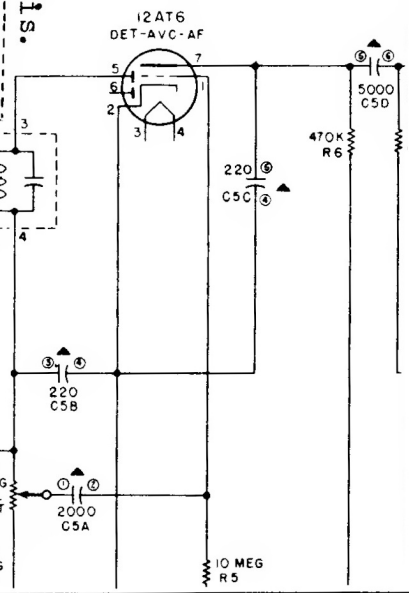
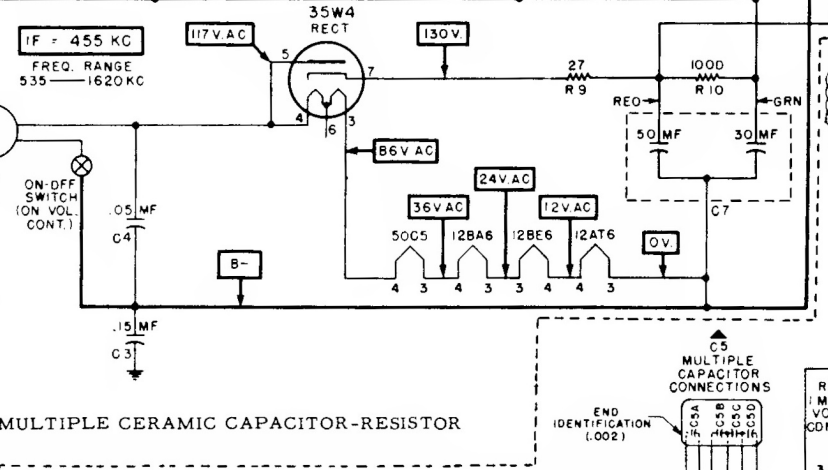
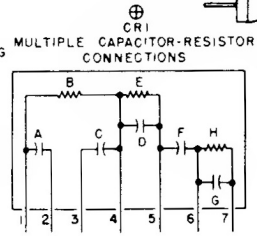
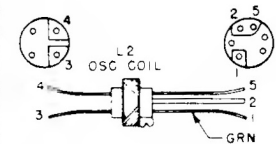
MODELS
5H11
5H12
5H13
CHASSIS
HS-256

Motorola Inc.

Models 5H11, 5H12, 5H13,
Chassis HS-256, omit C5,
C3, uses common chassis.



NOTE
CAPACITORS ARE INDICATED IN MMF UNLESS OTHERWISE SPECIFIED
ALL RESISTORS INDICATED IN OHMS.
K = ONE THOUSAND (1000) OHMS.
VOLTAGE MEASUREMENTS MADE WITH ELECTRONIC TYPE VOLTMETER.
VOLTAGES TAKEN BETWEEN POINT INDICATED AND B-.
VOLTAGE TOLERANCE ± 10%.
INPUT VOLTAGE 117 V AC
NO SIGNAL INPUT
MEASUREMENTS MADE WITH GANG FULLY OPEN
* TRIMMERS ON GANG



SCHEMATIC DIAGRAM OF CHASSIS USING MULTIPLE CERAMIC CAPACITOR-RESISTOR

DIAGRAM OF CHASSIS USING MULTIPLE CERAMIC CAPACITOR