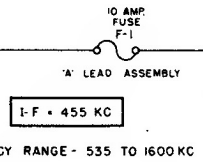


DIAG NO 630591853-A

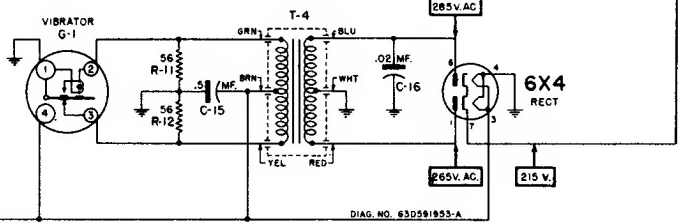
NOTES

VOLTAGE READINGS SHOWN WERE MEASURED FROM POINT INDICATED TO CHASSIS WITH A VTVM NO SIGNAL WAS TUNED IN. INPUT VOLTAGE WAS 6.3V DC AT BAT. RECEPTACLE. VOLTAGE TOLERANCE $\pm 10\%$. ALL RESISTORS INDICATED IN OHMS. K=ONE THOUSAND (1000) OHMS.

CONNECT TO CONVENIENT SOURCE OF BATTERY POWER (6 VOLTS)



FREQUENCY RANGE - 535 TO 1600 KC



DIAG. NO. 630591853-A

- TUBE COMPLEMENT**
- 6BA6 - RF Amplifier
 - 6BE6 - Converter
 - 6BA6 - IF Amplifier
 - 6AT6 - Det, AVC & AF Amp
 - 6AQ5 - Power Amplifier
 - 6X4 - Rectifier

POWER INPUT - 6.8 amps at 6.3 volts
POWER OUTPUT - 3.5 watts (max)

Motorola
AUTO
Radio

Motorola Inc.

Compact automotive type superheterodyne receiver designed for installation in any car when used with appropriate Motorola control head and speaker.

MODEL
600