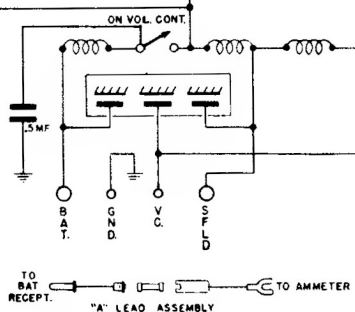
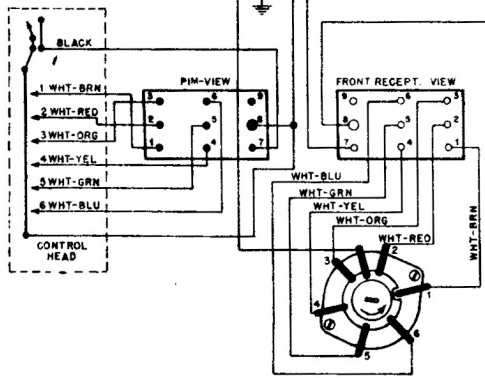


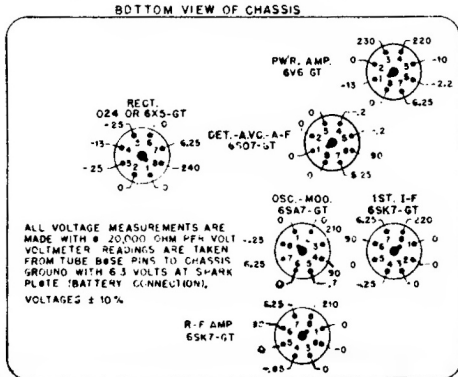
I.F. = 455 KC
 FREQUENCY RANGE
 535 KC TO 1600 KC

TONE CONTROL RELAY
 OPERATED BY PUSHING
 VOLUME CONTROL KNOB.



MODEL 605

Galvin Mfg. Co.
 MOTOROLA
 MODEL 605 (CHASSIS AS-15)
 SCHEMATIC DIAGRAM



NOTES: - ALL RESISTORS ARE INDICATED
 IN OHMS.
 K=ONE THOUSAND (1000) OHMS.
 * MUTE SWITCH, ACTUATED BY
 CARRIAGE.
 SWITCH S-3 (ON TUNER) IS
 ACTUATED BY CARRIAGE PLATE
 WHEN ELECTRICALLY TUNED.

ALL VOLTAGE MEASUREMENTS ARE
 MADE WITH A 20,000 OHM PER VOLT
 VOLTMETER. READINGS ARE TAKEN
 FROM TUBE BASE PINS TO CHASSIS
 GROUND WITH 6.3 VOLTS AT SHANK
 PLATE (BATTERY CONNECTION),
 VOLTAGES ± 10%