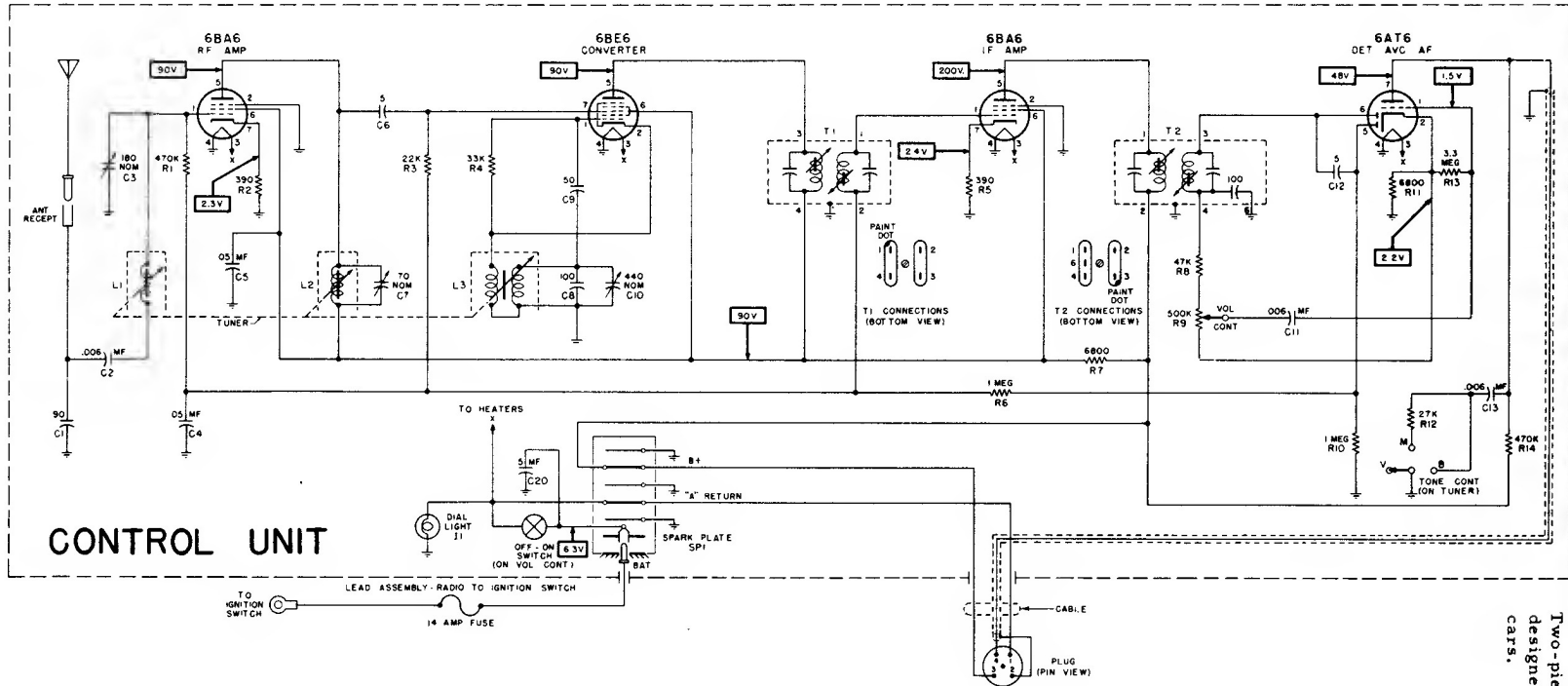


# Motorola Auto Radio

Two-piece automotive type receiver, specifically designed for installation in Plymouth P-22 and P-23 cars.

MODEL  
606



**NOTES**

RESISTORS INDICATED IN OHMS  
K = ONE THOUSAND (1000) OHMS  
CAPACITORS INDICATED IN MICROMICROFARADS UNLESS OTHERWISE SPECIFIED  
VOLTAGE READINGS SHOWN WERE TAKEN FROM POINT INDICATED TO CHASSIS WITH A VTVM NO SIGNAL INPUT  
INPUT VOLTAGE 6.3V DC AT BATTERY RECEPTACLE  
VOLTAGE TOLERANCE ±10%

**IF = 455 KC**

FREQUENCY RANGE 540 TO 1600 KC

