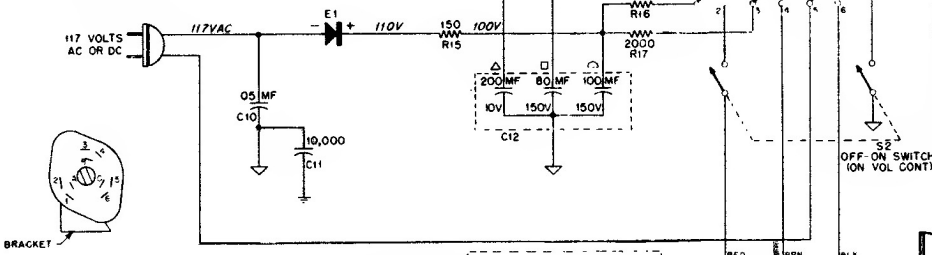
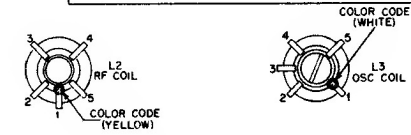
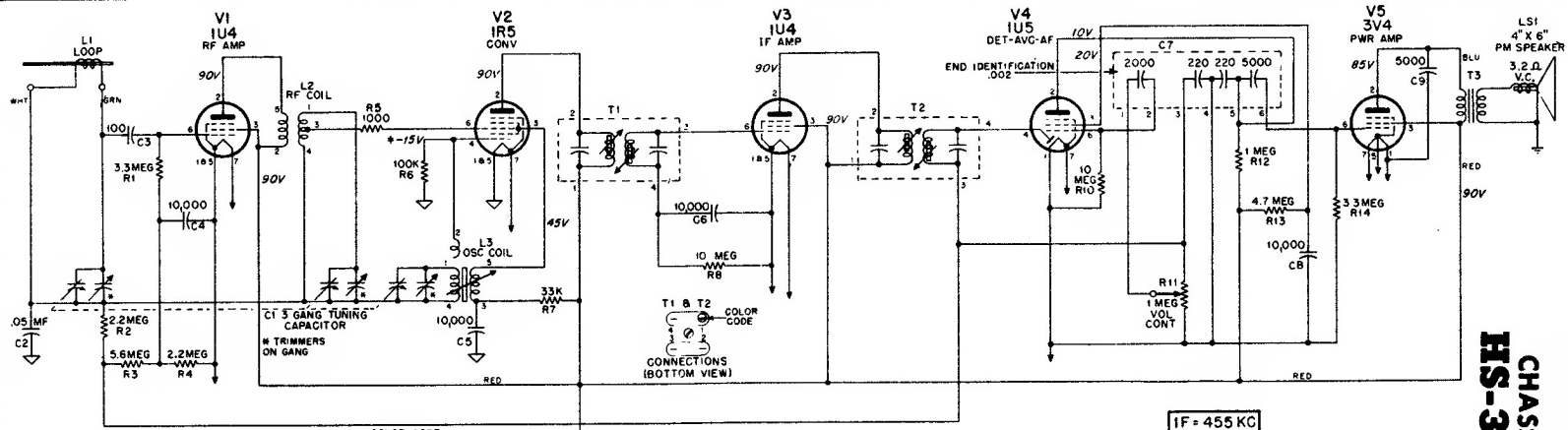
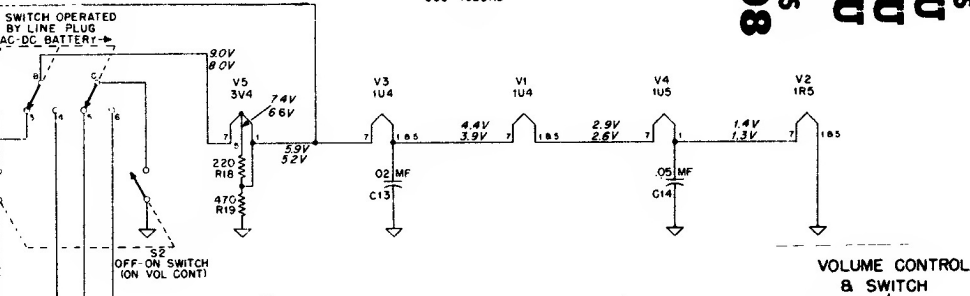
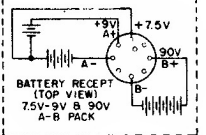


62L1U
62L2U
62L3U

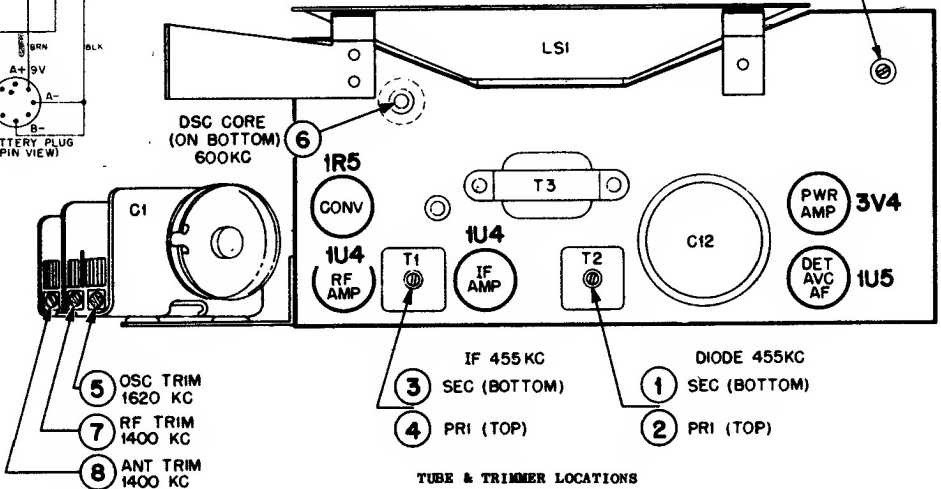
CHASSIS
HS-308



EVEREADY*756
BURGESS*16260
GENERAL*362
OR EQUIVALENT



VOLUME CONTROL & SWITCH



TUBE & TRIMMER LOCATIONS

- NOTE
- 1 VOLTAGE MEASUREMENTS MADE WITH ELECTRONIC TYPE VOLTMETER
 - 2 VOLTAGES TAKEN BETWEEN POINT INDICATED & B-
 - 3 INPUT VOLTAGE 117VAC.
 - 4 VOLTAGE TOLERANCE $\pm 10\%$.
 - 5 NO SIGNAL INPUT.
 - 6 * MEASUREMENT MADE WITH GANG FULLY OPEN.
 - 7 UPPER FILAMENT VOLTAGE READING OBTAINED ON BATTERY OPERATION AND LOWER ON AC
 - 8 CAPACITORS INDICATED IN MMF UNLESS OTHERWISE SPECIFIED.
 - 9 ALL RESISTORS INDICATED IN OHMS. K=1000 OHMS.
- \perp - CHASSIS GROUND
 \downarrow - B-