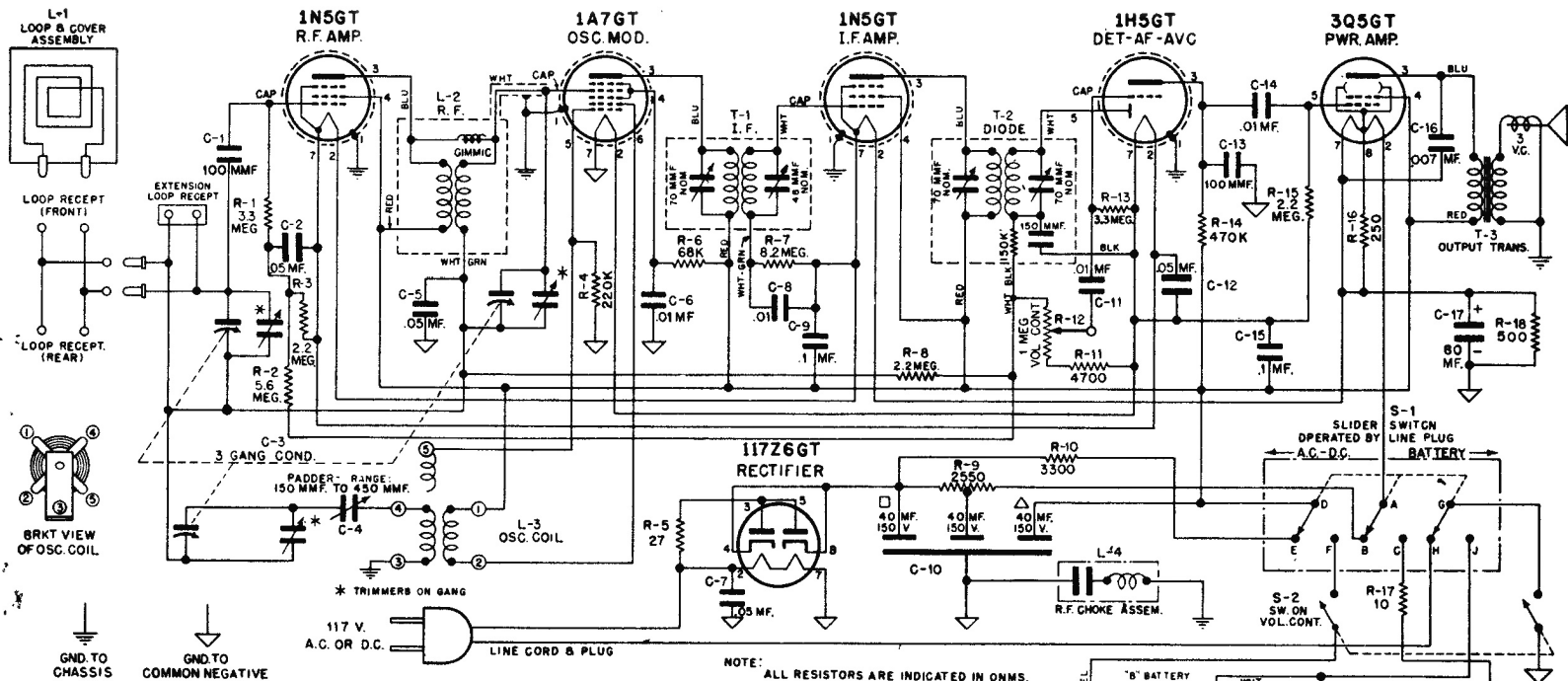


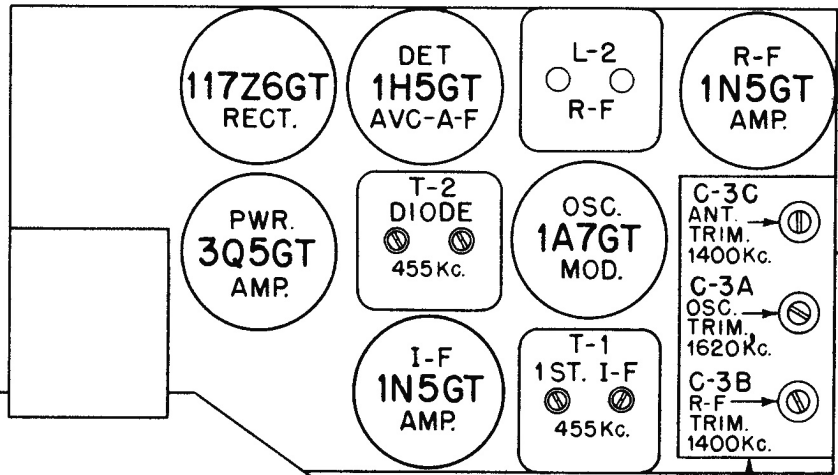
CHASSIS HS-7

Motorola

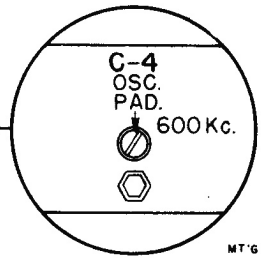
Models: 65L11 and 65L12



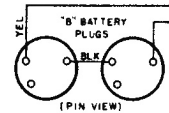
NOTE: ALL RESISTORS ARE INDICATED IN OHMS. K=ONE THOUSAND(1,000) OHMS.



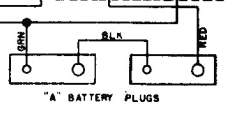
Motorola



END VIEW

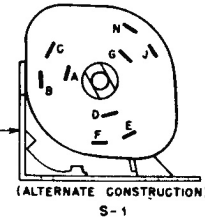


"B" BATTERY
45 VOLT BATTERY
(2 REQUIRED)
(EVEREADY NO. 482
OR EQUIVALENT)

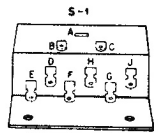


"A" BATTERY
4 1/2 VOLT BATTERY
(2 REQUIRED)
(EVEREADY NO. 748
OR EQUIVALENT)

CURRENT DRAIN		
	A.C.	BATT.
"A"	49 MA.	49 MA.
"B"	14 MA.	14.5 MA.



(ALTERNATE CONSTRUCTION)



SLIDER SWITCH

I.F. = 455 KC
FREQUENCY RANGE
535 KC TO 1600 KC

• Models 65L11 & 65L12, Chassis HS-7