

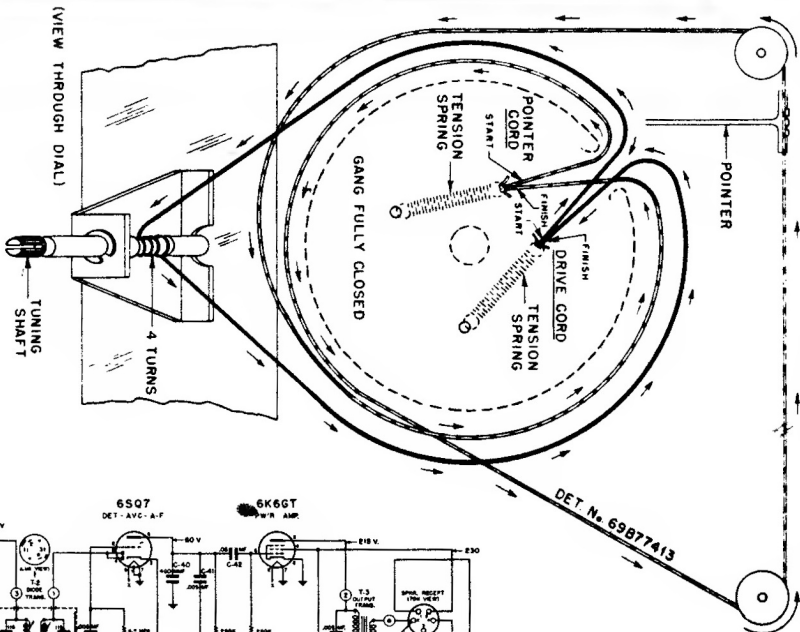
Motorola

MODEL 67F61BN

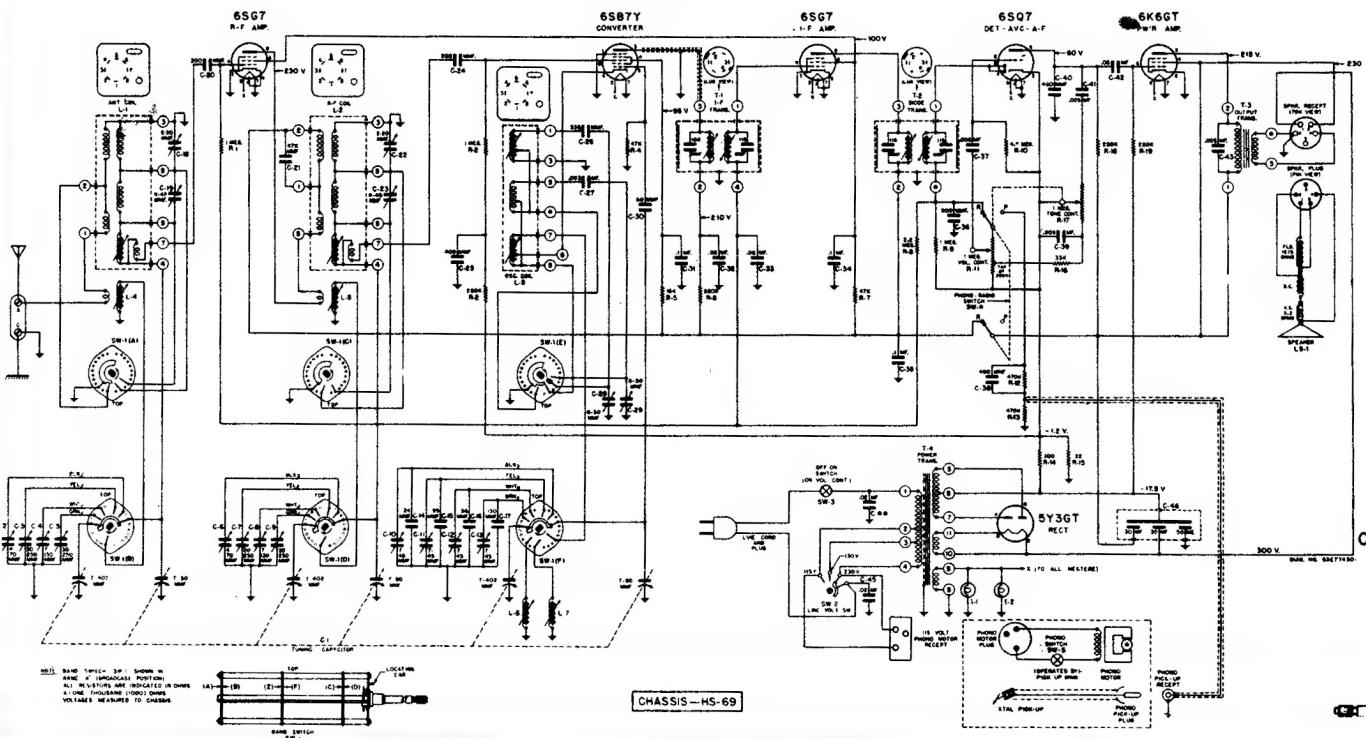
CHASSIS HS-69.

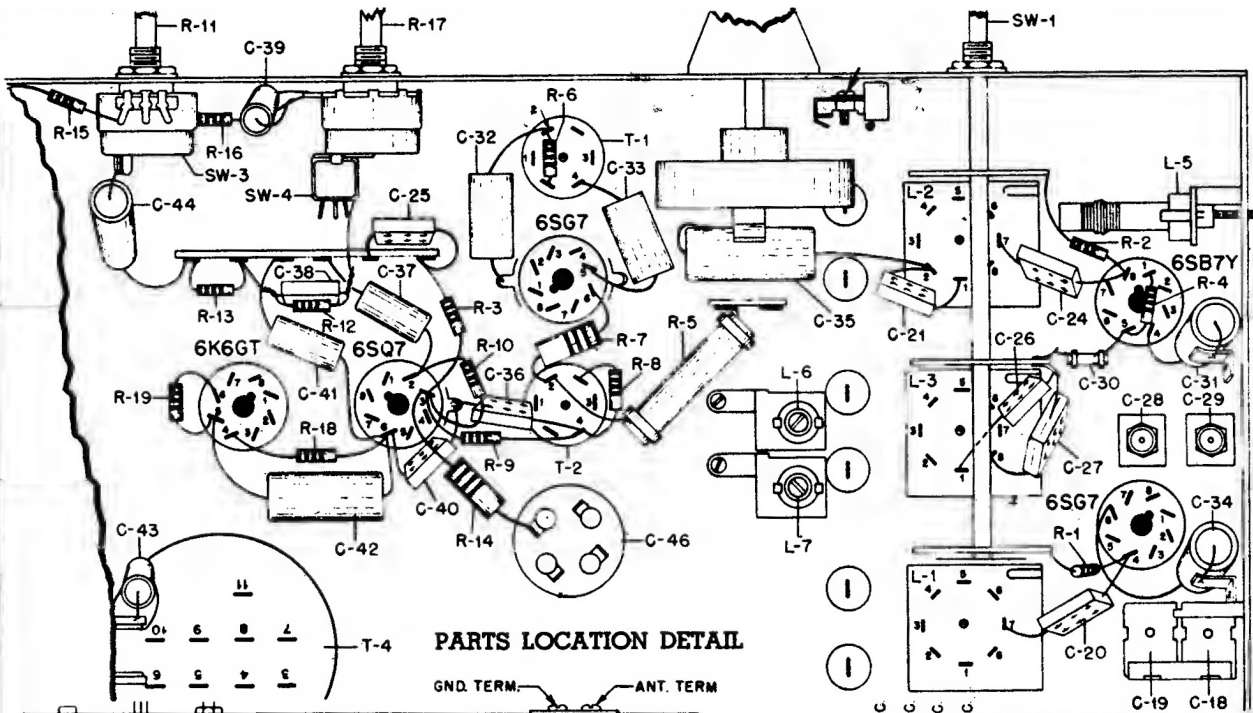
- WAVEBAND SWITCH (K).
- "A" position - 532 to 1620 Kc.
 - "B" position - 3.0 to 9.1 Mc.
 - "C" position - 8.8 to 10.6 Mc.
 - "D" position - 10.5 to 13.9 Mc.
 - "E" position - 13.8 to 16.6 Mc.
 - "F" position - 16.5 to 22.5 Mc.

STRING DRIVE DETAIL

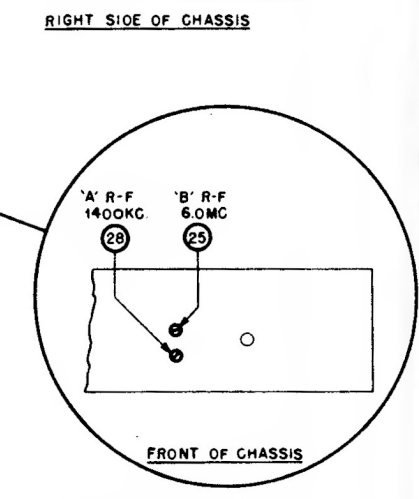
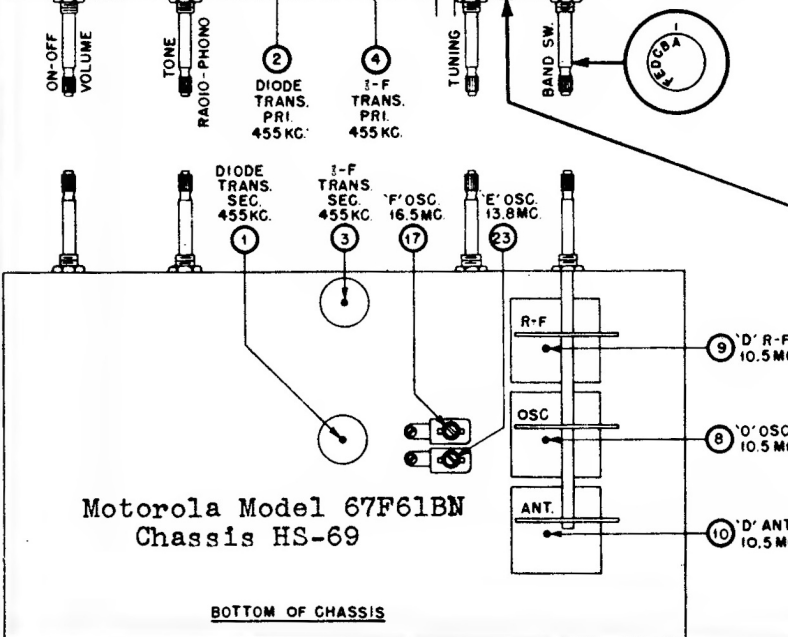
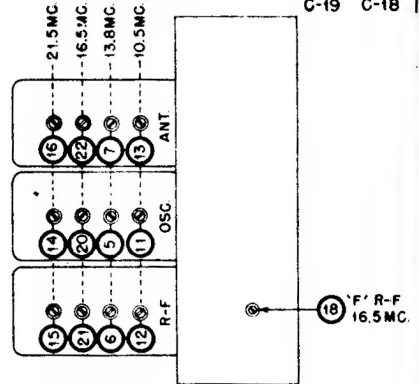
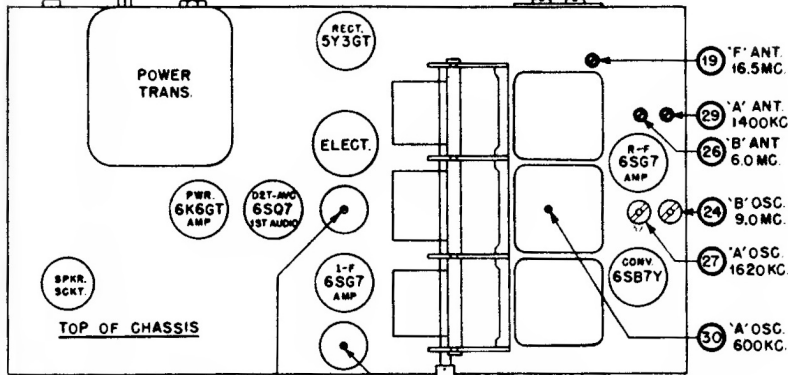


MOTOROLA
Model 67F61BN
Chassis HS-69





PARTS LOCATION DETAIL



Motorola Model 67F61BN
Chassis HS-69

TUBE AND TRIMMER LOCATIONS

BOTTOM OF CHASSIS