

MODEL BT-2 SCHEMATIC DIAGRAM

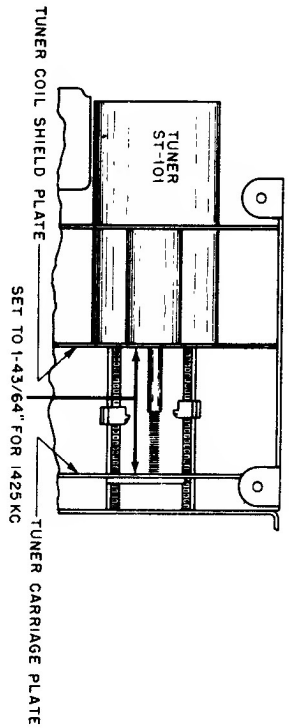
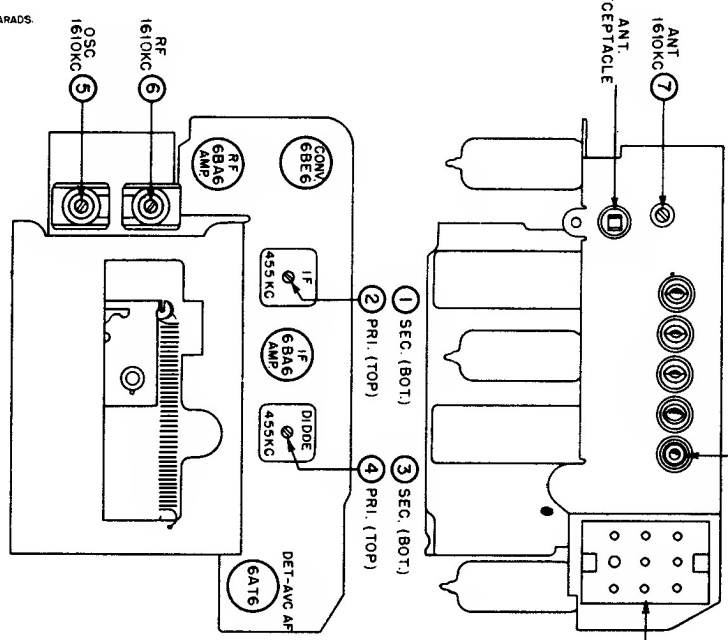
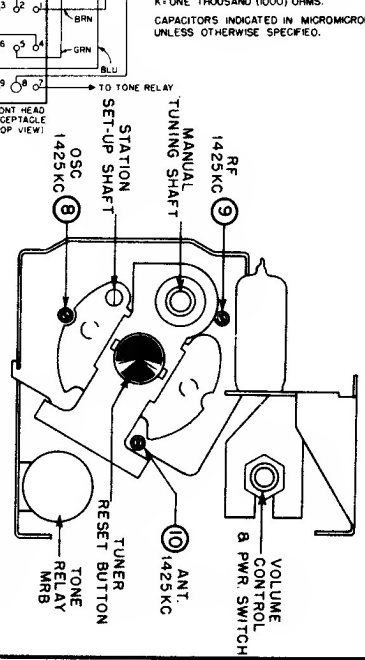
VOLTAGE READINGS SHOWN WERE MEASURED FROM POINT INDICATED TO CHASSIS, USING A VACUUM TUBE VOLTMETER VOLTAGE TOLERANCE ±10% INPUT VOLTAGE WAS 70 VDC BATTERY RECEPTACLE

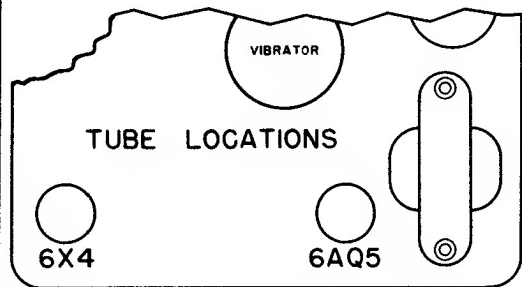
ALL RESISTORS INDICATED IN OHMS K = ONE THOUSAND (1000) OHMS.

CAPACITORS INDICATED IN MICROMICROFARADS. UNLESS OTHERWISE SPECIFIED.

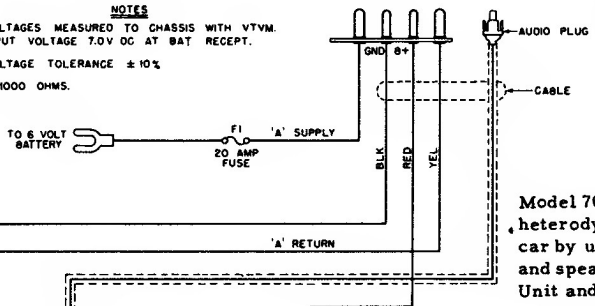
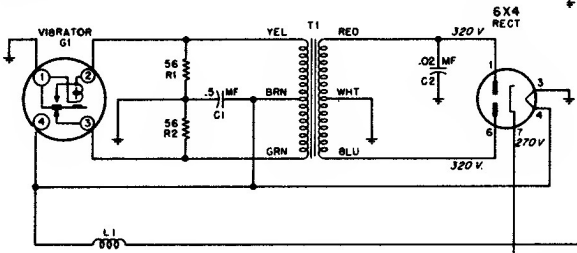
Model BT-2 is a four-tube automotive type tuner with electrically operated pushbuttons. It contains the RF Amp, Converter, IF Amp, Detector, and 1st AF Amplifier stages. This Tuner Unit is universal and can be installed in any car by using the appropriate Motorola control head and speaker kit. The Tuner Unit must be used with a separate Audio & Power Unit (Motorola Models P6-2 or P8-2).

MODEL BT-2 TUBE & TRIMMER LOCATIONS





NOTES
 VOLTAGES MEASURED TO CHASSIS WITH VTVM.
 INPUT VOLTAGE 7.0V DC AT BAT RECEPT.
 VOLTAGE TOLERANCE $\pm 10\%$
 K = 1000 OHMS.

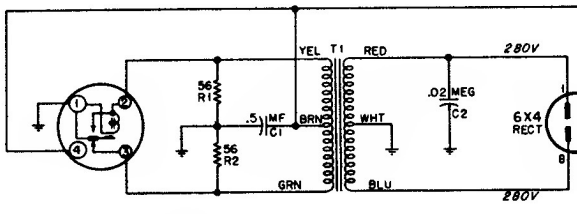


Model P6-2 is a two-tube Audio & Power Unit designed to be used with Tuner Units described in this manual.

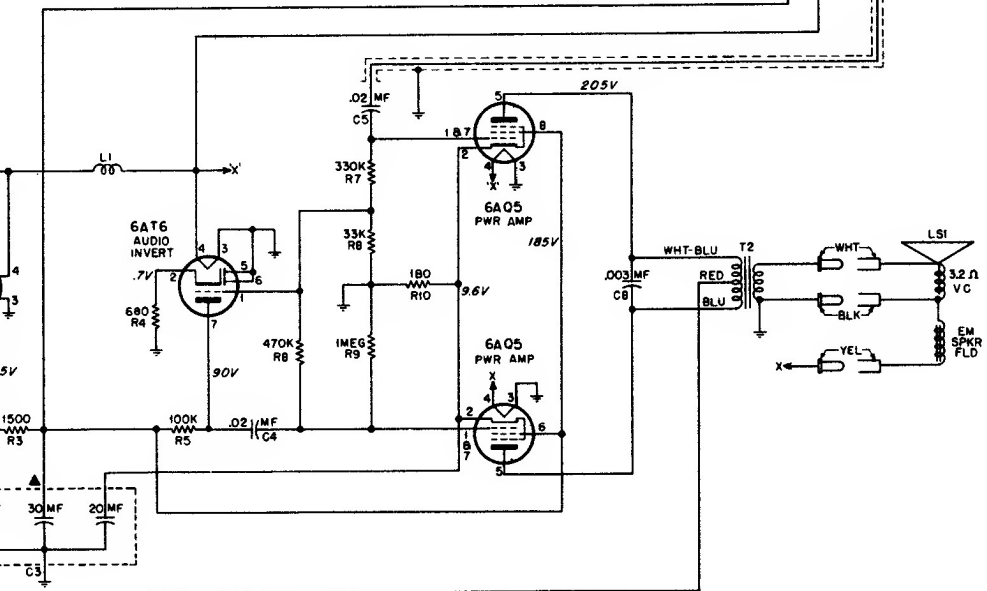
Model 702 is a compact two-piece automotive super-heterodyne receiver designed for installation in any car by using with appropriate Motorola control head and speaker kit. It consists of a Model BT-2 Tuner Unit and a Model P6-2 Audio & Power Unit.

MODEL P6-2 SCHEMATIC DIAGRAM

Model 802 is a compact two-piece automotive super-heterodyne receiver designed for installation in any car by using with appropriate Motorola control head and speaker kit. It consists of a Model BT-2 Tuner Unit and a Model P8-2 Audio & Power Unit.

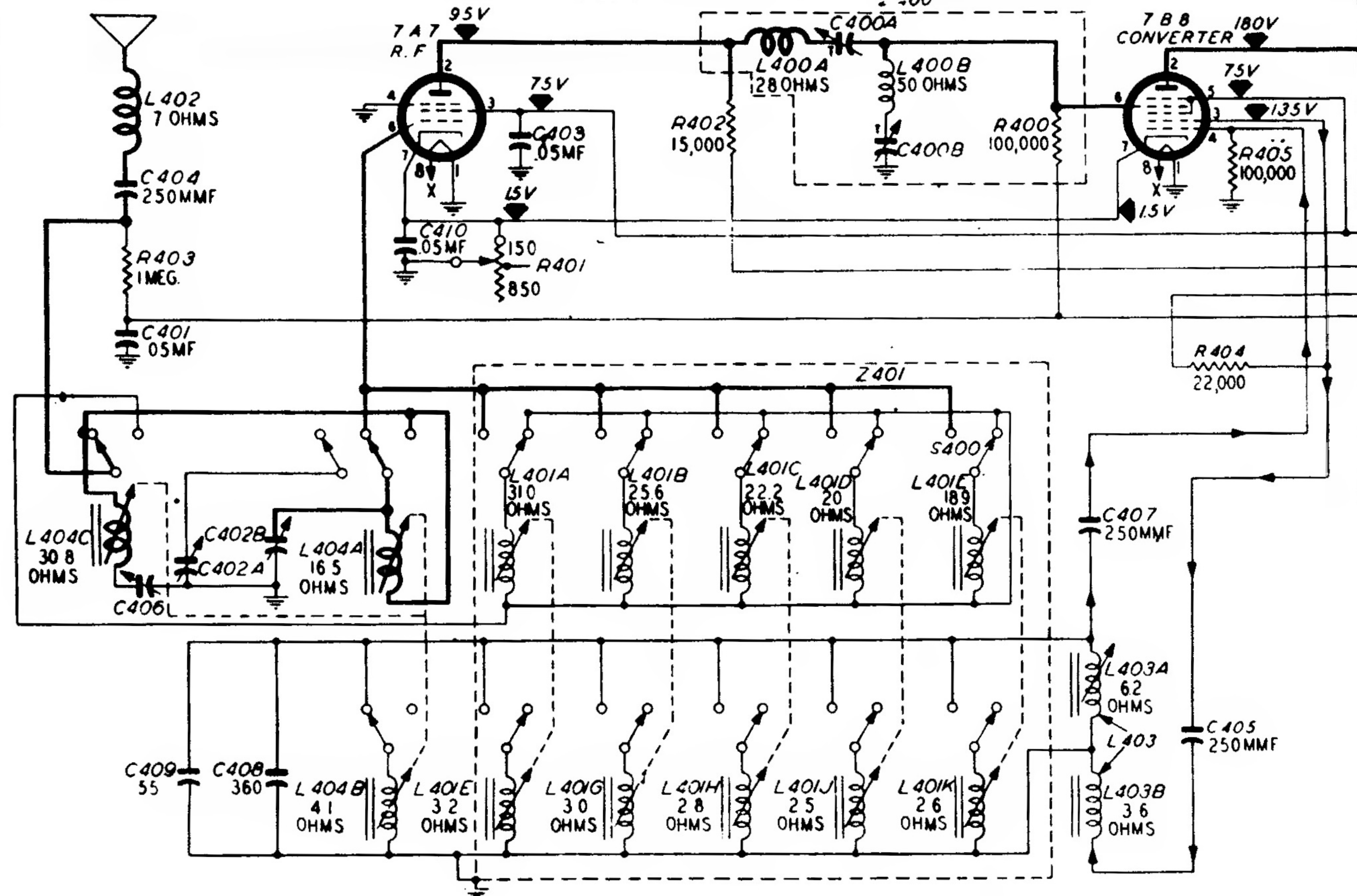


NOTES
 VOLTAGES MEASURED TO CHASSIS WITH VTVM.
 INPUT VOLTAGE 7.0V DC AT BAT RECEPT.
 VOLTAGE TOLERANCE $\pm 10\%$
 K = 1000 OHMS.

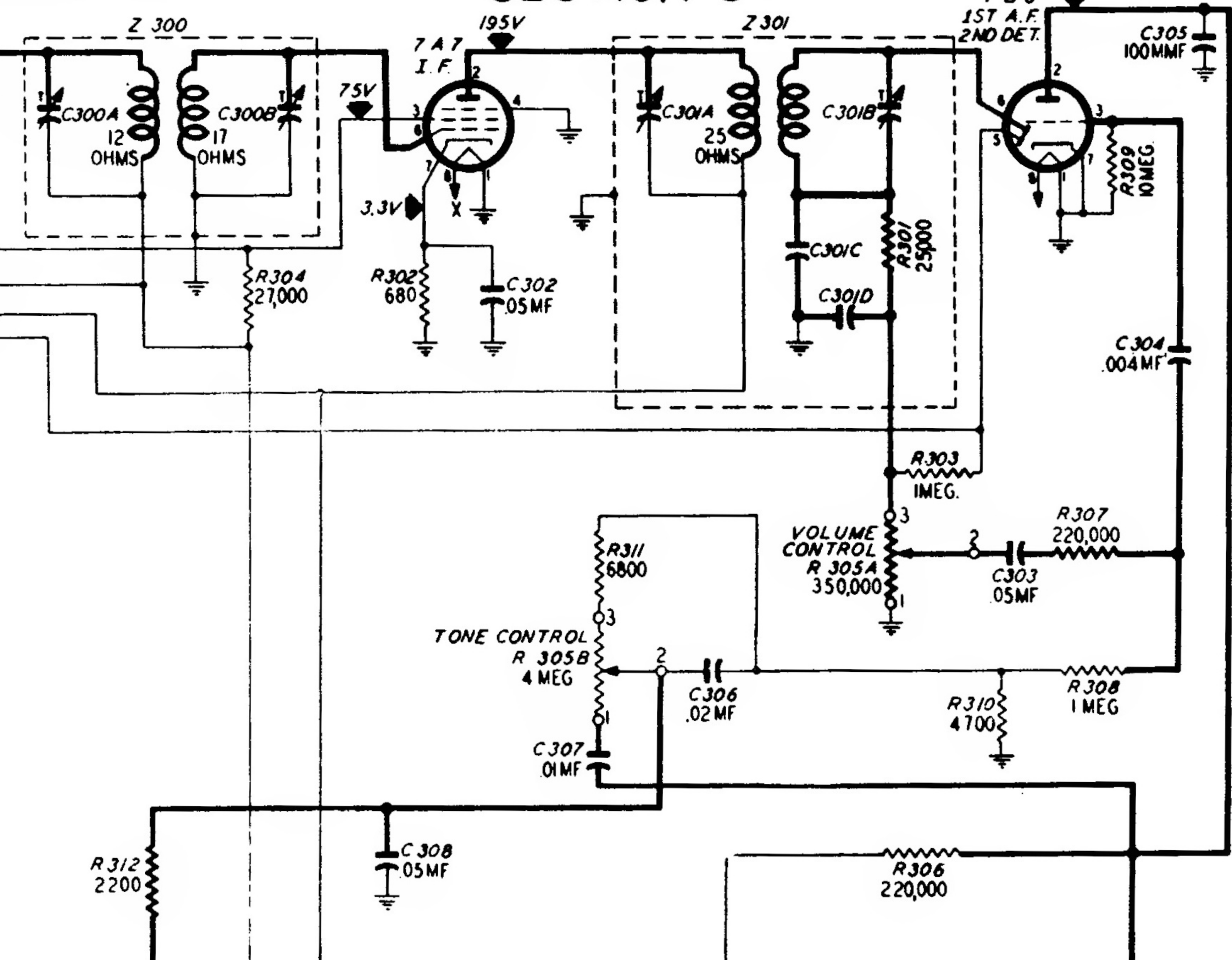


CHRYSLER-PHILCO AUTO RADIO, MODEL C4608
MOPAR MODEL 802

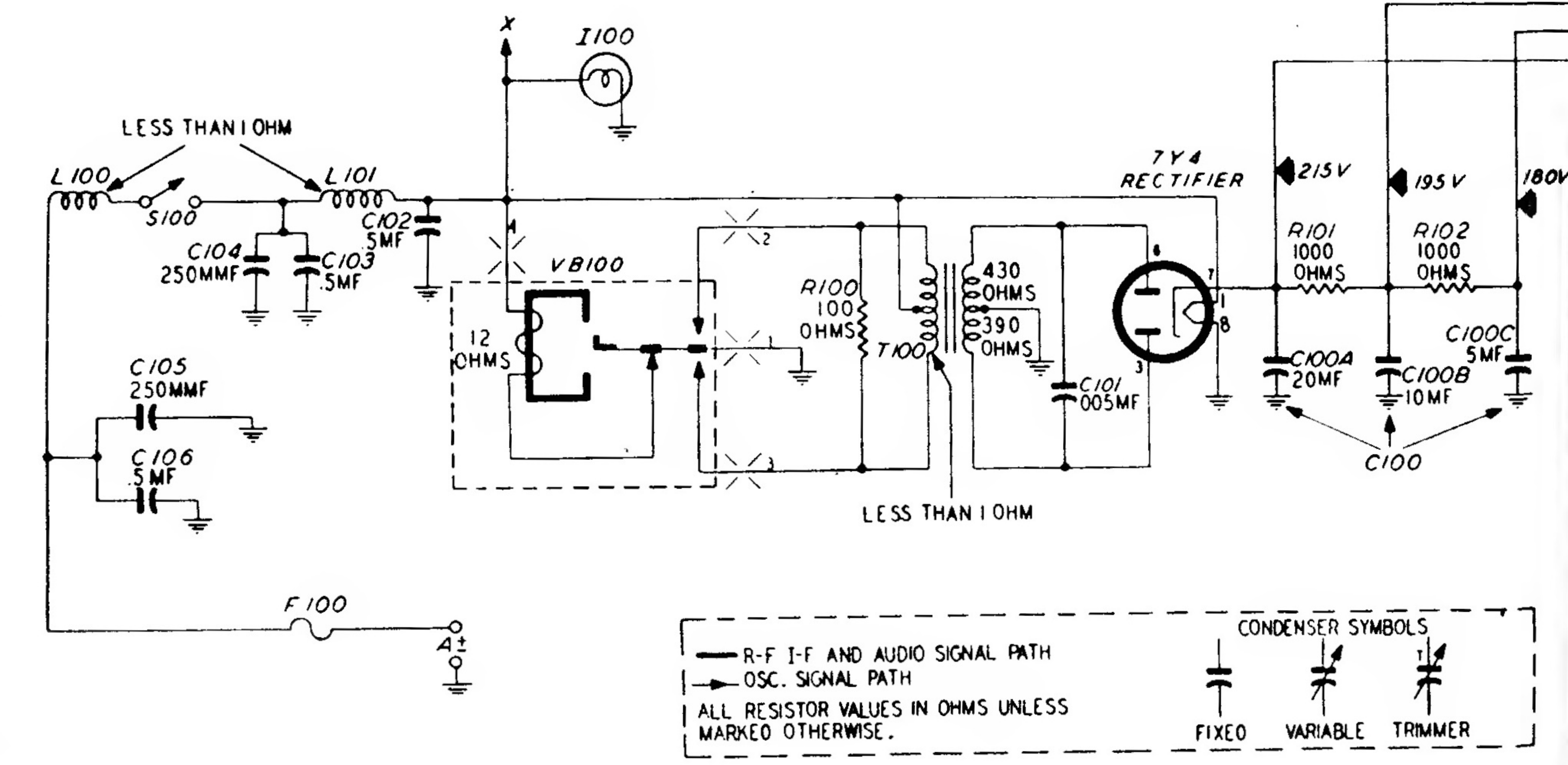
SECTION 4



SECTION 3



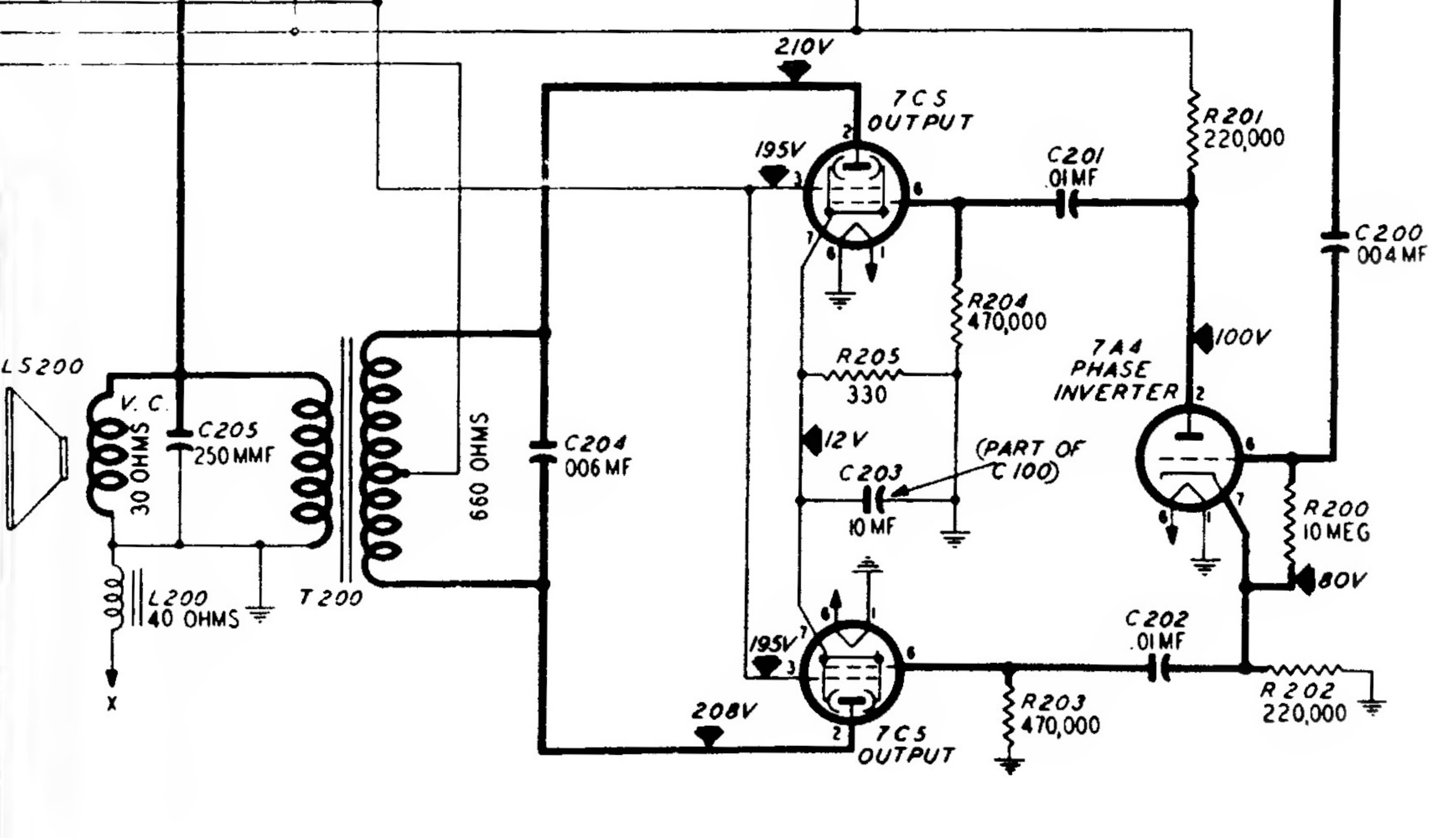
SECTION 1



— R-F I-F AND AUDIO SIGNAL PATH
 - - - - - OSC. SIGNAL PATH
 ALL RESISTOR VALUES IN OHMS UNLESS MARKED OTHERWISE.

CONDENSER SYMBOLS
 FIXED VARIABLE TRIMMER

SECTION 2



NOTE: All voltage, capacity, and resistance values shown are average. The voltages between B- (chassis) and other points indicated were measured with a 20,000 ohms-per-volt meter, with the volume control at minimum and the tuning control at 550 kc.

INTERMEDIATE FREQUENCY455 kc.