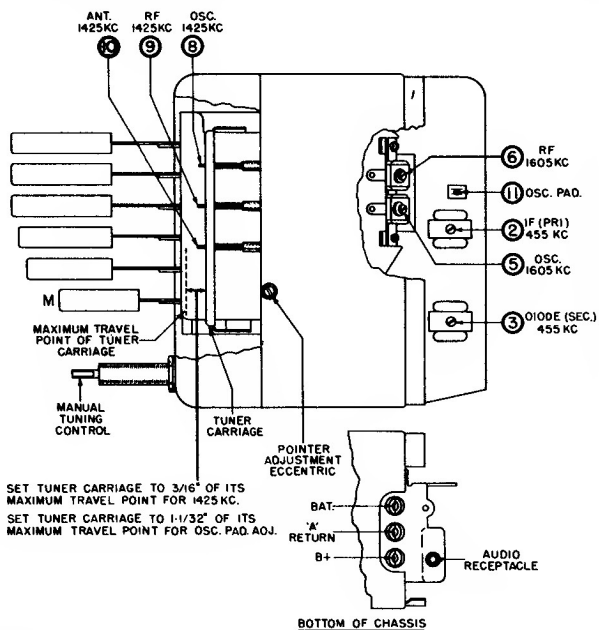
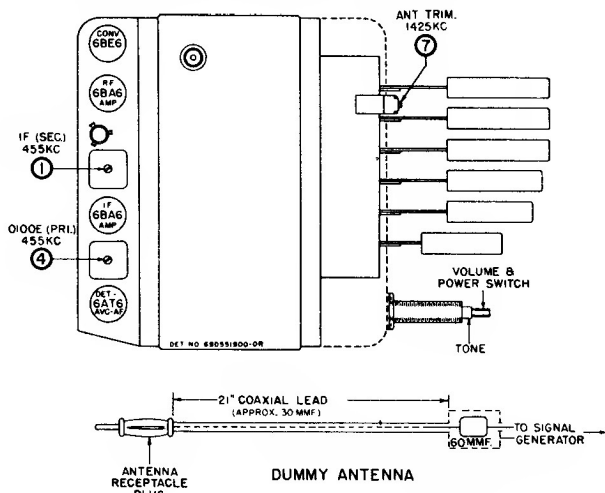


Motorola Auto Radio Model CT10 for 1950 Chevrolet. Model CT9 used in 1949 Chevrolet is very similar, but uses a 6V6GT power amplifier instead of a 6AQ5.

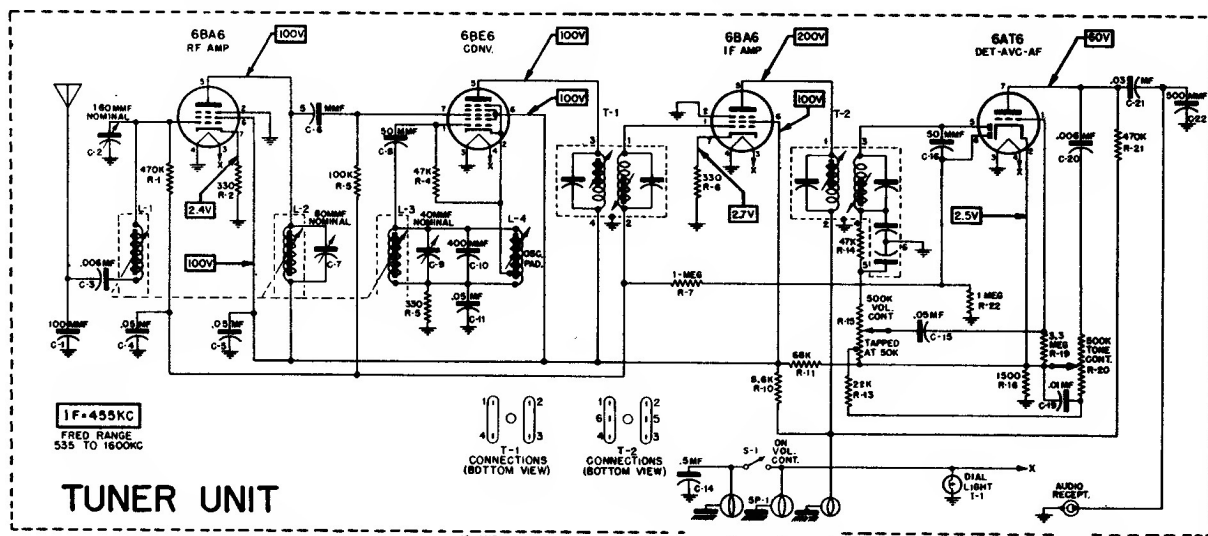


TO SET THE PUSH BUTTONS

1. Turn the radio ON and allow it to warm up for a few minutes.
2. Push the top button in as far as it will go and HOLD IT THAT WAY.
3. With the tuning knob, tune in the station you

desire to set up. Tune carefully until you are exactly on the station; tuning to either side of it will result in poor tone quality. Release button and knob after tuning-in the station.

4. Follow above steps 2 and 3 for the remaining four buttons.



NOTE:- ALL RESISTORS ARE INDICATED IN OHMS. K = ONE THOUSAND (1000) OHMS. VOLTAGE READINGS SHOWN WERE MEASURED FROM POINT INDICATED TO CHASSIS, WITH A VTVM. NO SIGNAL WAS TUNED IN. INPUT VOLTAGE WAS 6.3VDC AT BATTERY RECEPTACLE. VOLTAGE TOLERANCE $\pm 10\%$.

Motorola Inc.

