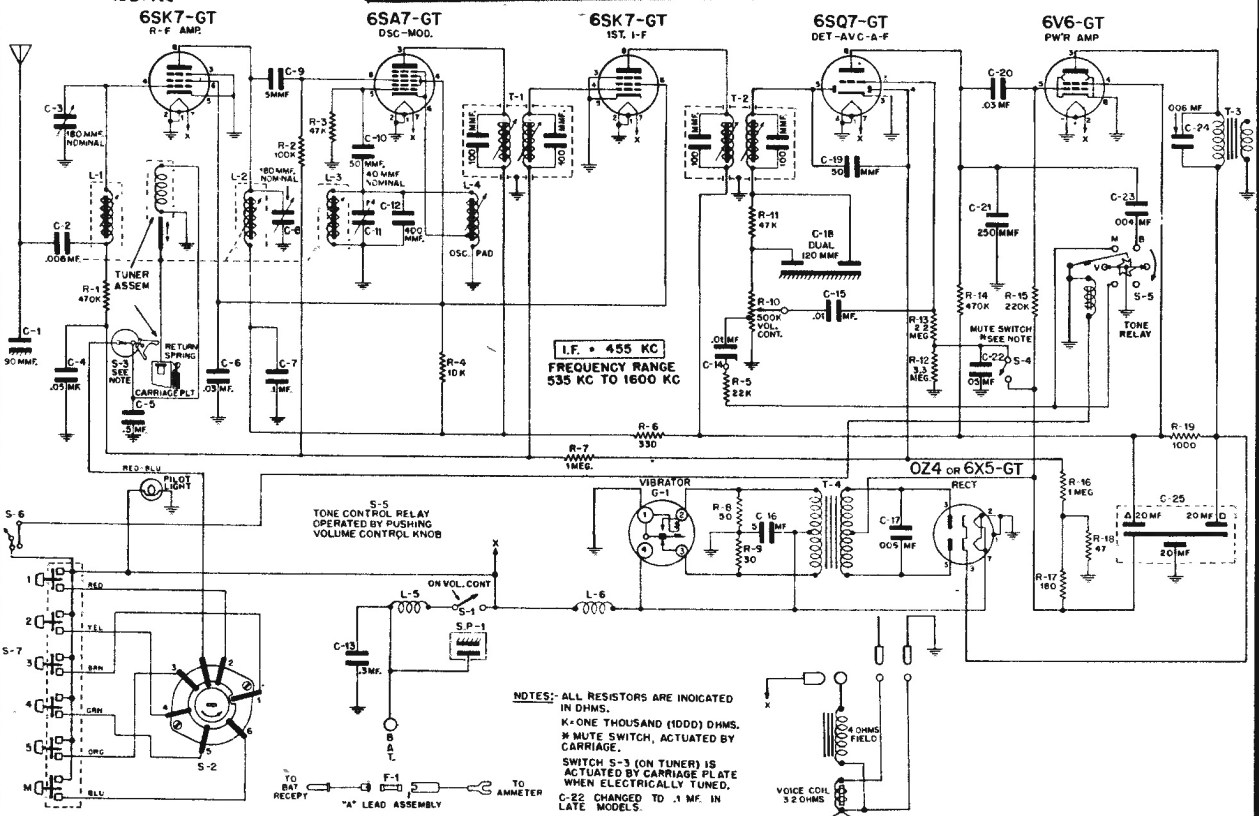
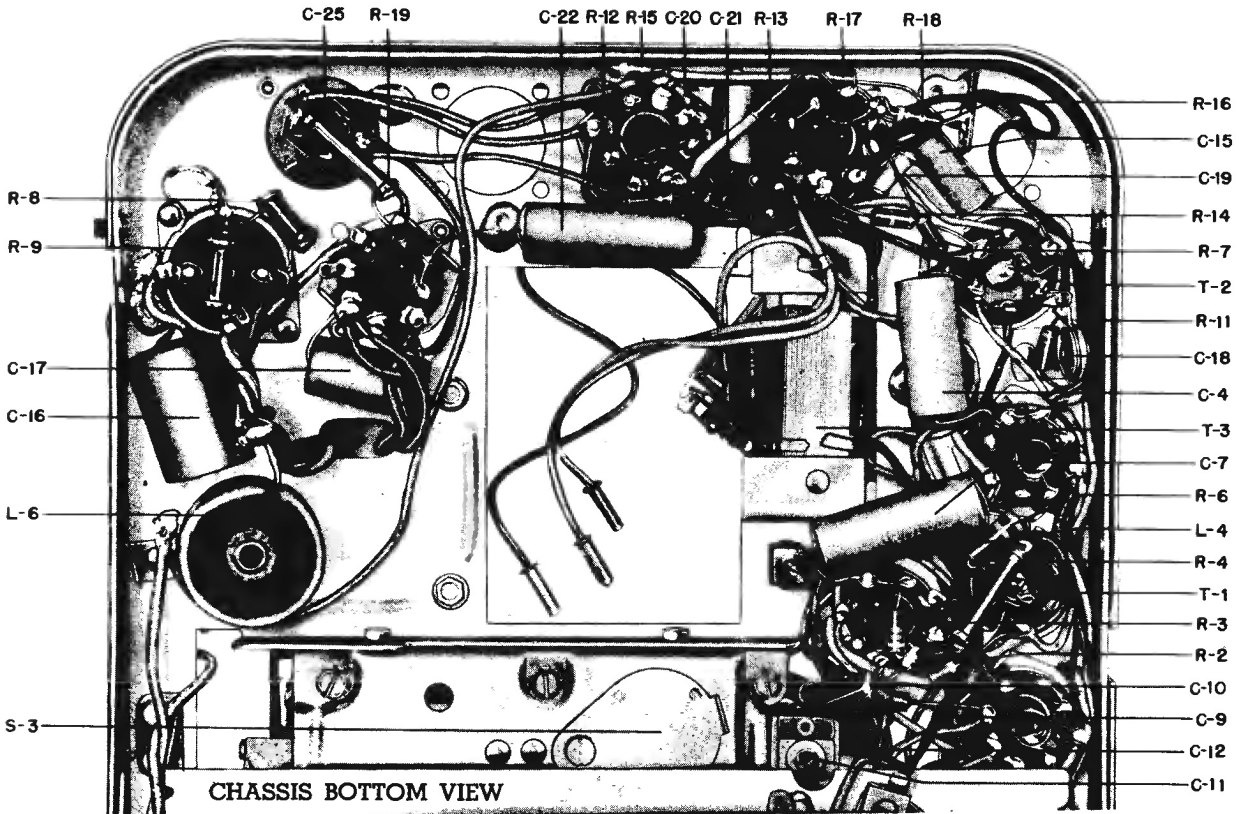
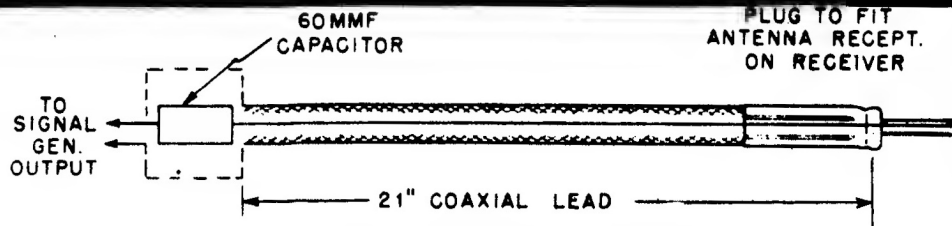


Motorola Model CT6 for Chevrolet (Many other Motorola Auto Sets for other cars are similar in some respects).



Motorola Auto Radio
Model CT6 for Chevrolet



DUMMY ANTENNA CONSTRUCTION DETAIL

STEP	TUNER POSITION SET TO	DUMMY ANTENNA	SIGNAL GENERATOR LEAD CONNECTED TO	SIG. GEN. SET AT	ADJUST FOR PEAK ON OUTPUT METER
1.	High frequency end (cores out)	.1 mfd. at Sig. Gen.	Osc. Mod grid (#5 pin)	455 Kc	#1 and 2 P & S in T-1 #3 and 4 P & S in T-2
2.	High frequency end, tuning shaft against stop. Cores should be set to project 1-1/8" from cans.*	60 mmf. at Sig. Gen. in series with 21" long coax lead	Antenna Receptacle	1600 Kc	#5 Osc. coil trimmer #6 R.F. coil trimmer #7 Ant. coil trimmer
3.	EXACTLY one full turn in from high frequency end. Use knob set screw as an indicator. Start measuring turn the moment tuner carriage starts moving inward.*	"	"	1425 Kc	#8 Osc. coil core #9 R.F. coil core #10 Ant. coil core
4.	EXACTLY four more full turns in (as indicated by knob setscrew)	"	"	Power turned Off.	#11 Osc. Pad. core for maximum noise

NOTE: If oscillator padder core adjustment is too far off, repeat alignment procedure, steps 2, 3, and 4. It may be necessary to repeat alignment more than once if padder adjustment has been indiscriminately tampered with.

5. Install assembled receiver in car and peak antenna trimmer (#7) to car antenna. Extend antenna to its full height. Tune set to a spot around 1400 kc that is free of stations, and adjust antenna trimmer (#7) for maximum noise.

* For greater accuracy in setting tuner to alignment frequencies, use gauge (Motorola Part No. 66A76825)

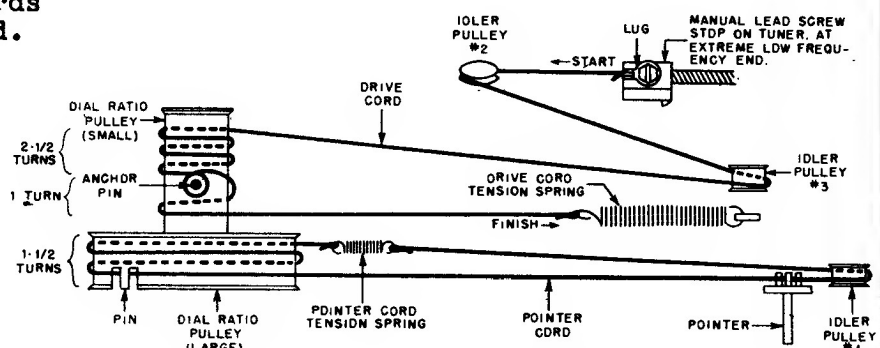
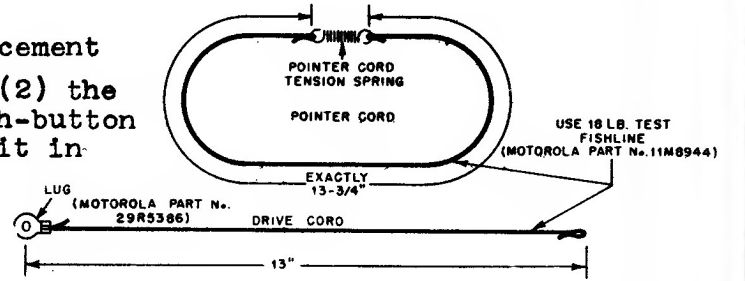
MOTOROLA Model CT6 for Chevrolet

Use special tool, Motorola part No. 66A76278, for adjusting tuner cores. A small screwdriver will do for I.F. and R.F. alignment. Use dummy antenna as described.

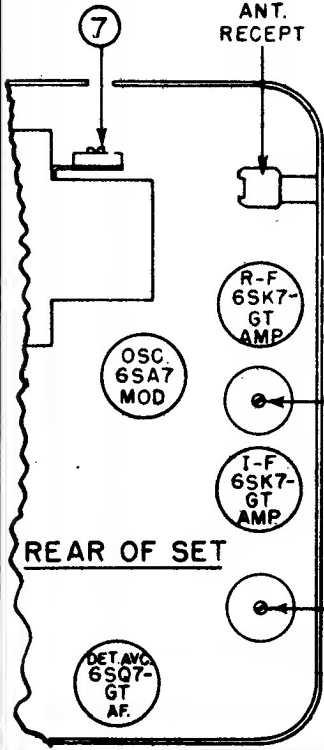
A low range output meter is required. Adjustment points shown below will be exposed after front and rear covers are removed. Allow receiver to warm up, press "M" button to place automatic tuner in manual tuning position. Volume control at maximum, tone control to voice position (high position).

Pointer and Drive Cord Replacement

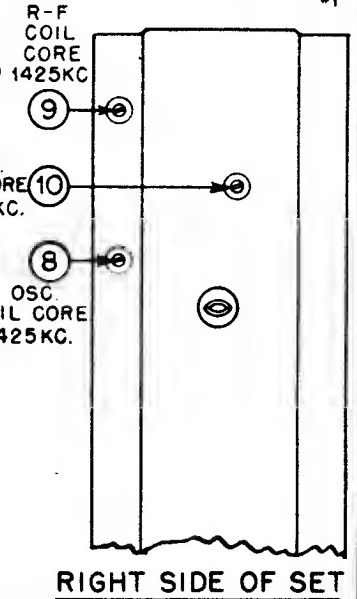
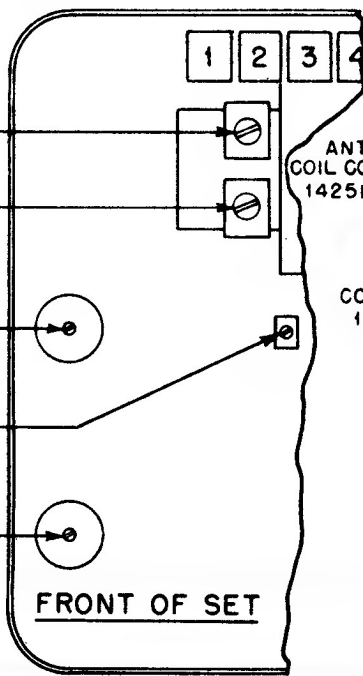
Remove (1) the front cover, (2) the dial background, and (3) push-button assembly. Four screws hold it in position. Do not unsolder any wire leads, just lay the push-button assembly on top of the set. The pointer and drive cords are now fully exposed.



ANT. COIL TRIM.
1600 KC.



- R-F COIL TRIMMER 1600 KC. (6)
- OSC. COIL TRIMMER 1600 KC. (5)
- (T-1) I-F TRANS. 455 KC. (1)
- OSC. PAD. (11)
- (T-2) DIODE TRANS 455 KC. (3)



RIGHT SIDE OF SET