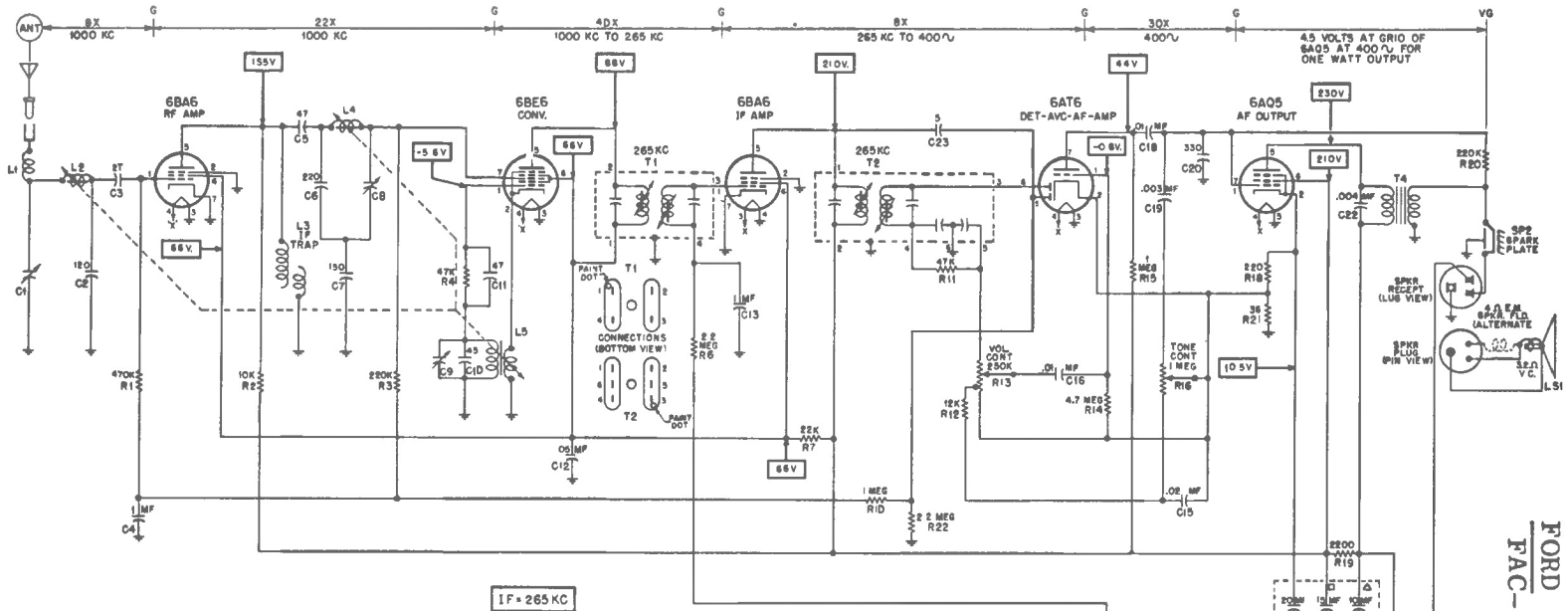
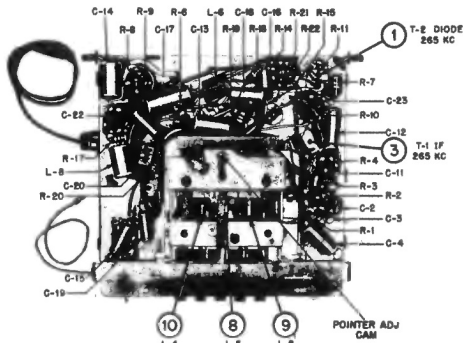
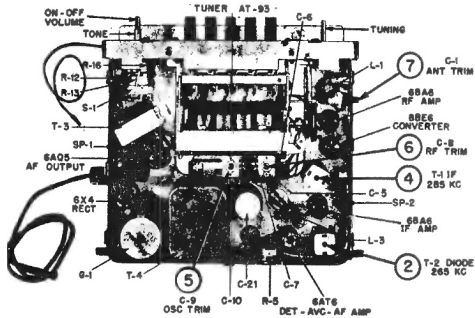
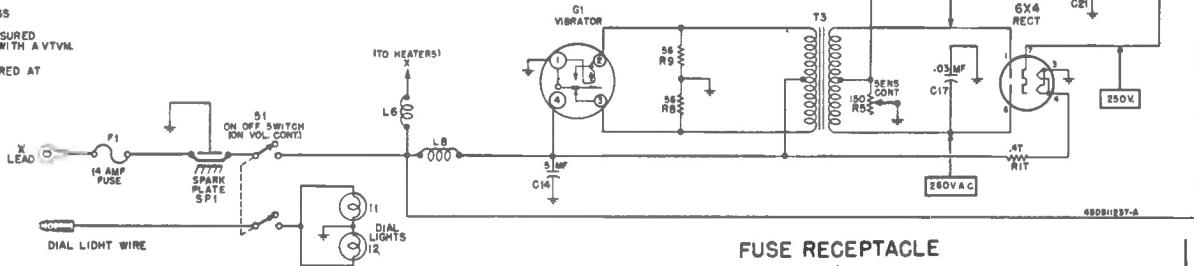


Motorola

MODEL
MOTOROLA 2MF
FORD
FAC-18805-A



NOTE-
ALL RESISTORS INDICATED IN OHMS
K=ONE THOUSAND (1000) OHMS.
CAPACITORS INDICATED IN MMF UNLESS
OTHERWISE SPECIFIED
VOLTAGE READINGS SHOWN WERE MEASURED
FROM POINT INDICATED TO CHASSIS, WITH A VTVM.
NO SIGNAL WAS TUNED IN
INPUT VOLTAGE WAS 72V.DC, MEASURED AT
FUSE RECEPTACLE.



FUSE RECEPTACLE

ANTENNA TRIMMER
(ON SIDE)

ANTENNA RECEPT
(ON SIDE)

