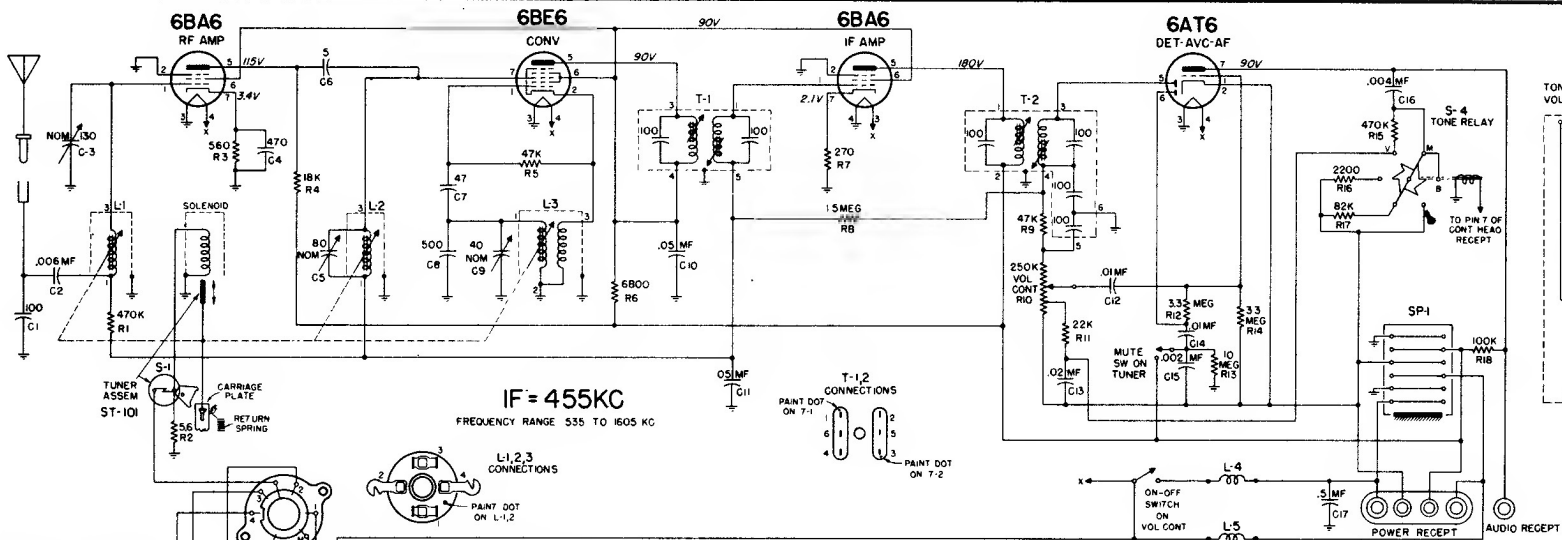


# MOTOROLA, INC. MODEL BT-2

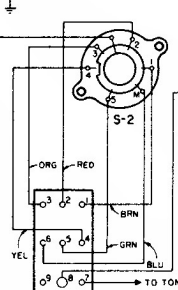


MODEL BT-2 SCHEMATIC DIAGRAM

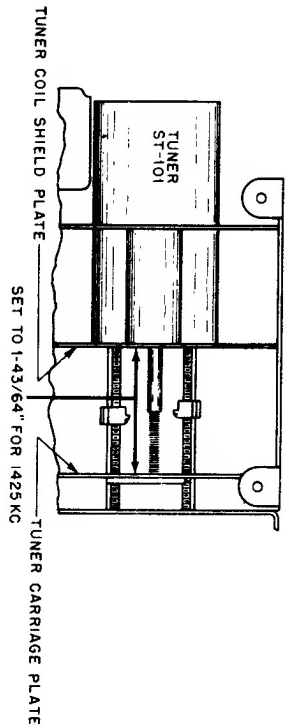
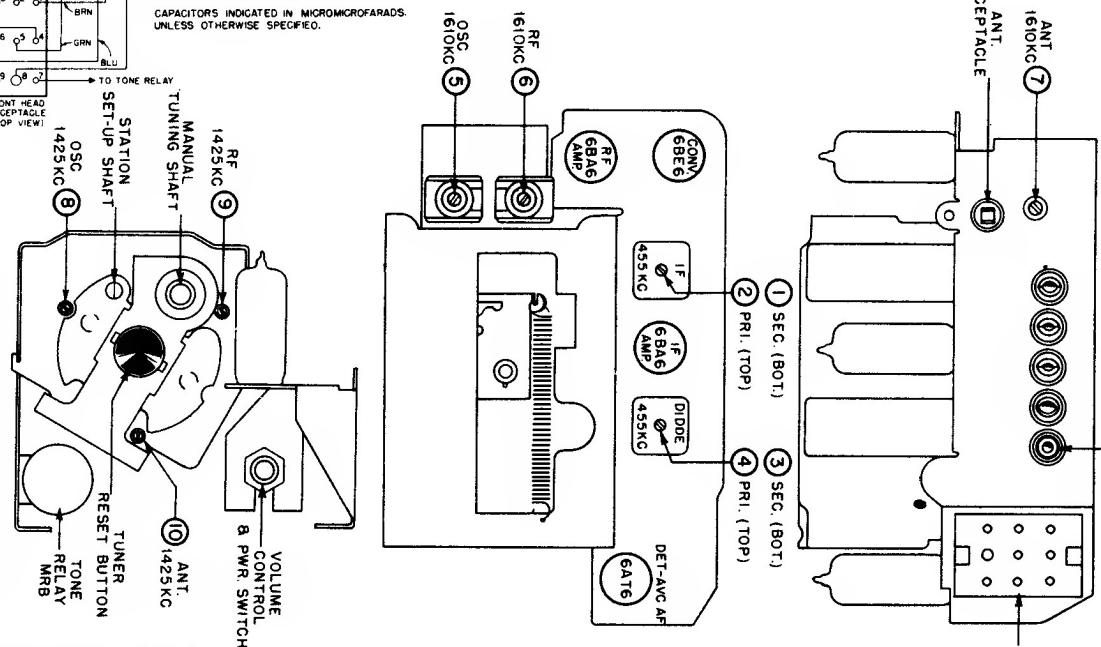
VOLTAGE READINGS SHOWN WERE MEASURED FROM POINT INDICATED TO CHASSIS, USING A VACUUM TUBE VOLTMETER VOLTAGE TOLERANCE ±10% INPUT VOLTAGE WAS 70 VDC BATTERY RECEPTACLE

ALL RESISTORS INDICATED IN OHMS K = ONE THOUSAND (1000) OHMS.

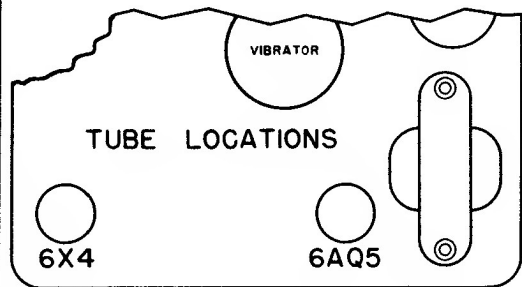
CAPACITORS INDICATED IN MICROMICROFARADS. UNLESS OTHERWISE SPECIFIED.



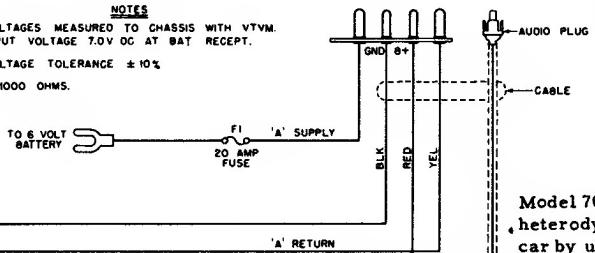
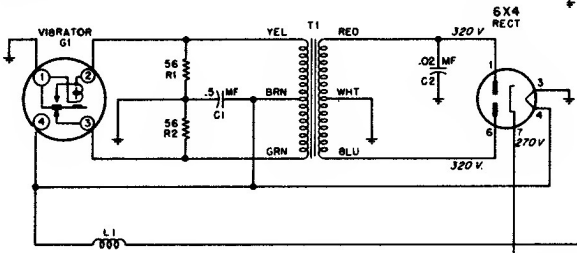
### MODEL BT-2 TUBE & TRIMMER LOCATIONS



Model BT-2 is a four-tube automotive type tuner with electrically operated pushbuttons. It contains the RF Amp, Converter, IF Amp, Detector, and 1st AF Amplifier stages. This Tuner Unit is universal and can be installed in any car by using the appropriate Motorola control head and speaker kit. The Tuner Unit must be used with a separate Audio & Power Unit (Motorola Models P6-2 or P8-2).



**NOTES**  
 VOLTAGES MEASURED TO CHASSIS WITH VTVM.  
 INPUT VOLTAGE 7.0V DC AT BAT RECEPT.  
 VOLTAGE TOLERANCE  $\pm 10\%$   
 K = 1000 OHMS.

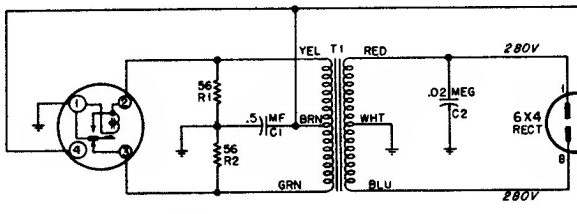


Model P6-2 is a two-tube Audio & Power Unit designed to be used with Tuner Units described in this manual.

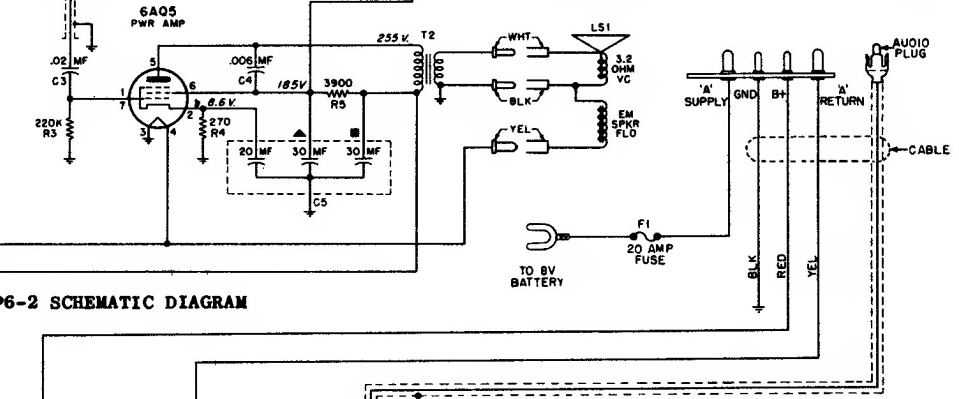
Model 702 is a compact two-piece automotive super-heterodyne receiver designed for installation in any car by using with appropriate Motorola control head and speaker kit. It consists of a Model BT-2 Tuner Unit and a Model P6-2 Audio & Power Unit.

**MODEL P6-2 SCHEMATIC DIAGRAM**

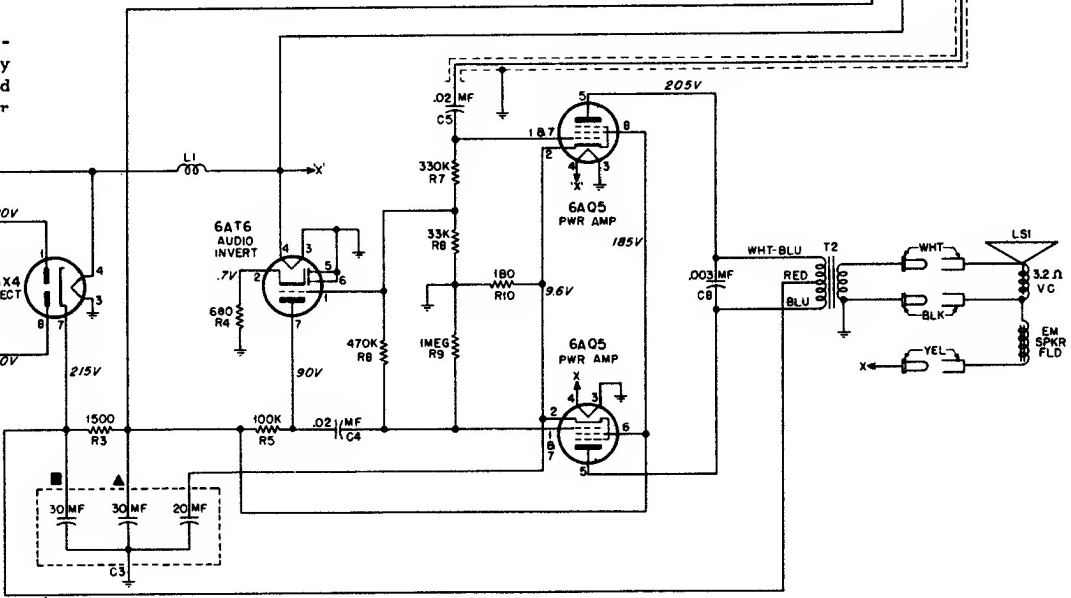
Model 802 is a compact two-piece automotive super-heterodyne receiver designed for installation in any car by using with appropriate Motorola control head and speaker kit. It consists of a Model BT-2 Tuner Unit and a Model P8-2 Audio & Power Unit.



**NOTES**  
 VOLTAGES MEASURED TO CHASSIS WITH VTVM.  
 INPUT VOLTAGE 7.0V DC AT BAT RECEPT.  
 VOLTAGE TOLERANCE  $\pm 10\%$   
 K = 1000 OHMS.



**MODEL P8-2 SCHEMATIC DIAGRAM**



**MODEL P8-2 SCHEMATIC DIAGRAM**