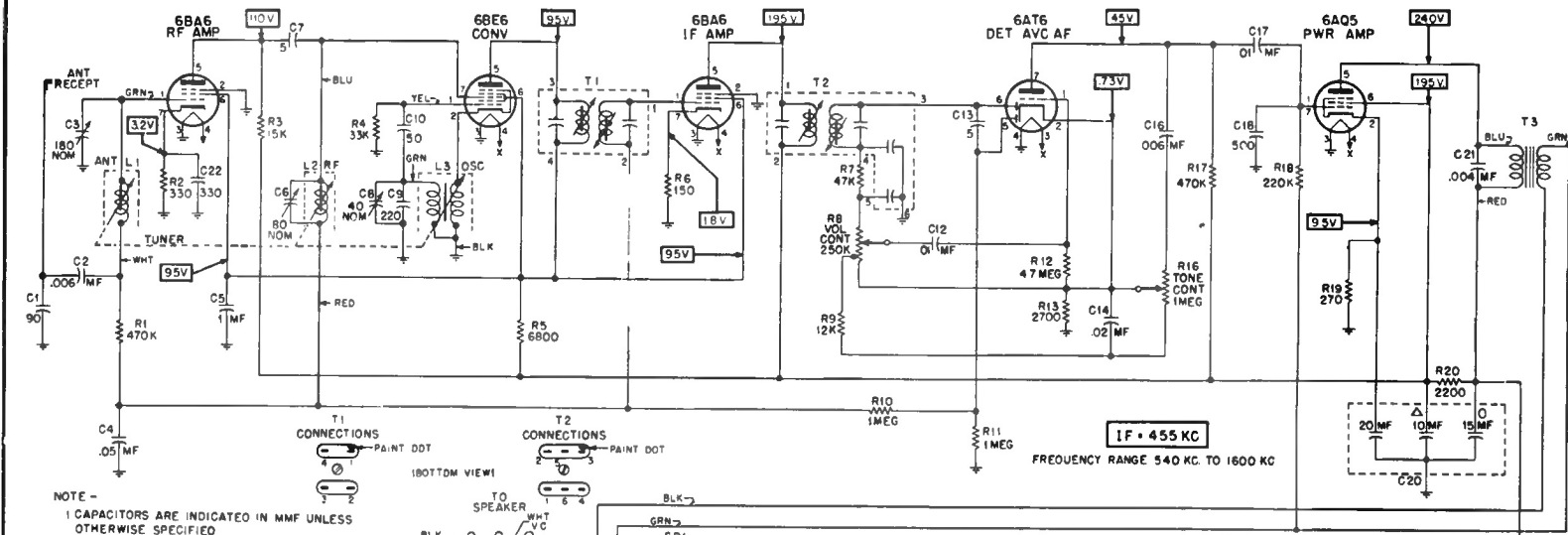


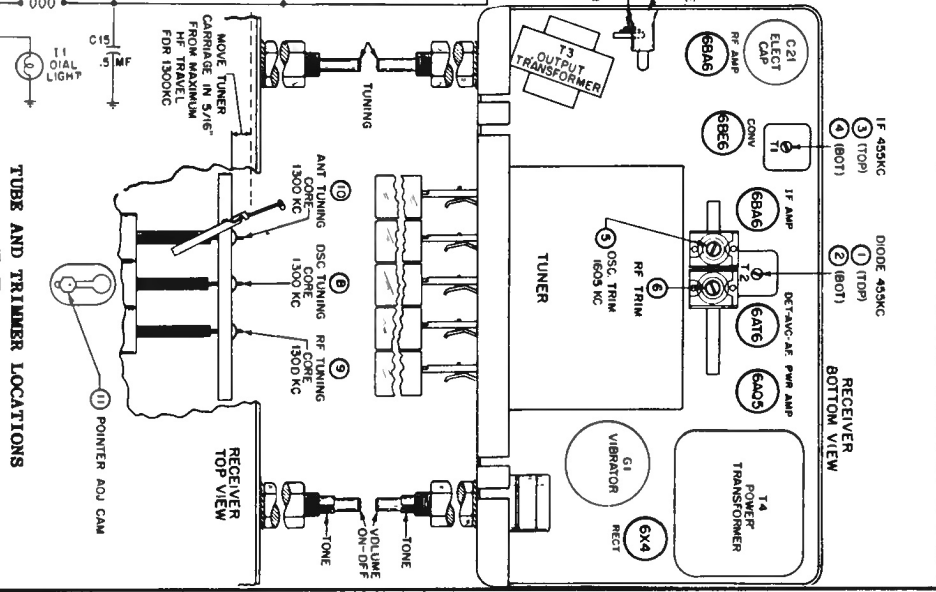
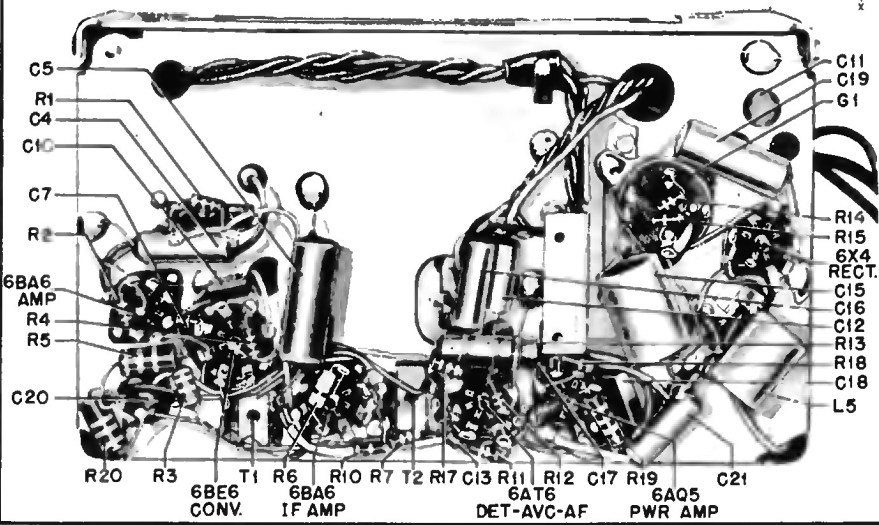
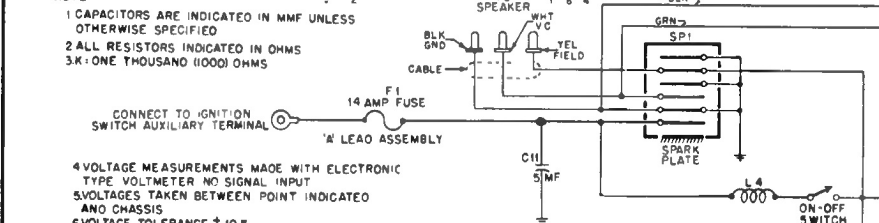
Motorola, Inc.

Model WS1C is very similar to WS2C, but uses a PM type speaker.

MODEL WILLYS WS2C



- NOTE -**
- 1 CAPACITORS ARE INDICATED IN MMF UNLESS OTHERWISE SPECIFIED
 - 2 ALL RESISTORS INDICATED IN OHMS
 - 3 K. ONE THOUSAND (1000) OHMS
 - 4 VOLTAGE MEASUREMENTS MADE WITH ELECTRONIC TYPE VOLTMETER NO SIGNAL INPUT
 - 5 VOLTAGES TAKEN BETWEEN POINT INDICATED AND CHASSIS
 - 6 VOLTAGE TOLERANCE $\pm 10\%$
 - 7 VOLTAGES MEASURED WITH 6.9V INPUT MEASURED AT SPARK PLATE



IF 425KC DODE 425KC
 (3) (TOP) (1) (TOP)
 (4) (BOT) (2) (BOT)

RECEIVER BOTTOM VIEW