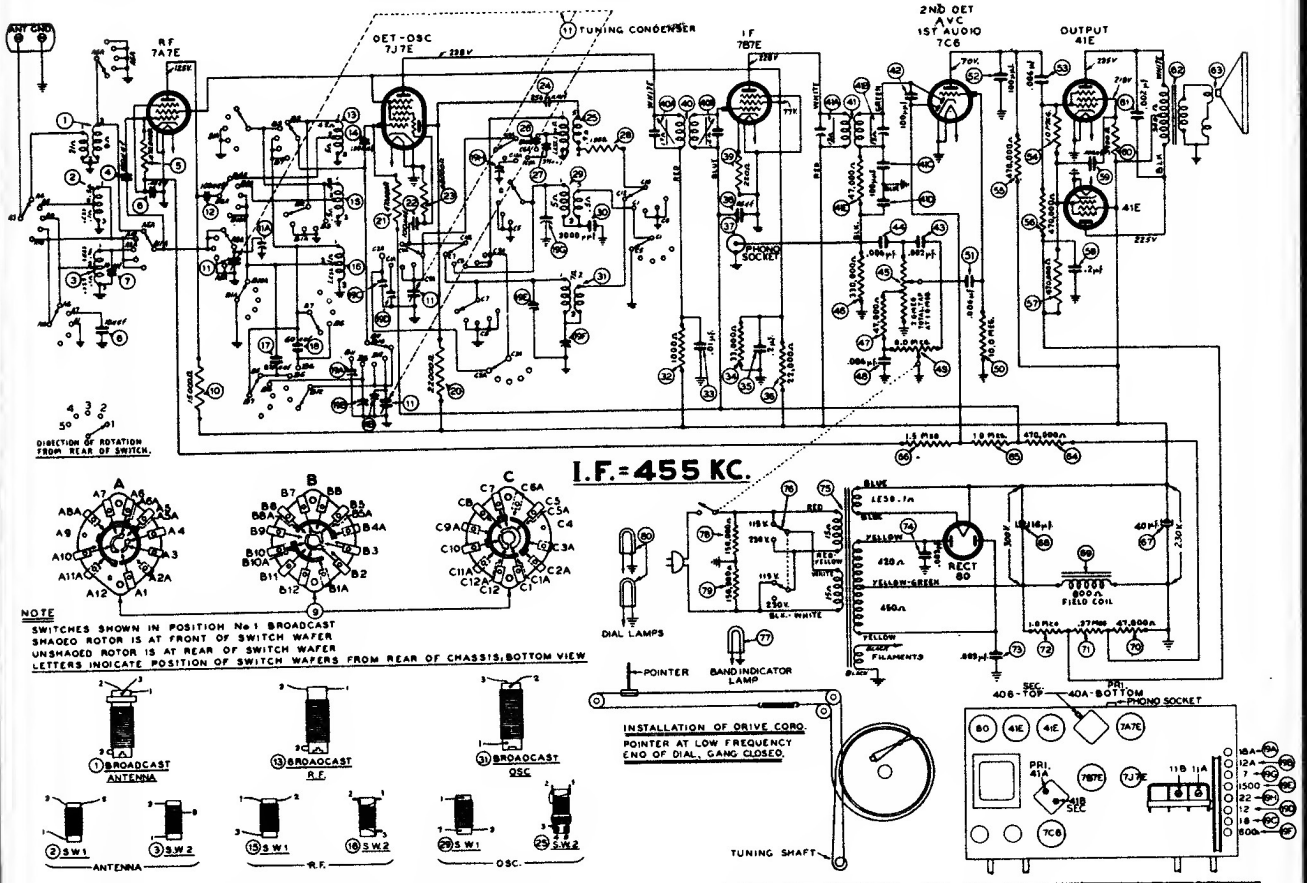


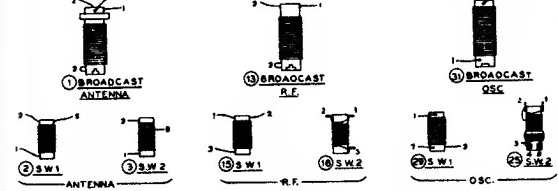
PHILCO

MODEL 42-730, CODE 121



I.F. = 455 KC.

NOTE
SWITCHES SHOWN IN POSITION No. 1 BROADCAST
SHADED ROTOR IS AT FRONT OF SWITCH WAFER
UNSHADED ROTOR IS AT REAR OF SWITCH WAFER
LETTERS INDICATE POSITION OF SWITCH WAFERS FROM REAR OF CHASSIS, BOTTOM VIEW



SIGNAL GENERATOR			RECEIVER			SPECIAL INSTRUCTIONS
Output Connections to Radio	Dummy Aerial Note A	Dial Setting	Dial Setting	Control Settings	Adjust Compensators	
Lug of aerial tuning cond.	.1 mfd.	455 KC.	580 KC.	Band Switch "Brdcst" Voimax	41A, 41B, 40A, 40B	
Aerial	400 ohms	22 MC.	22 MC.	Band Switch SW 2	19H, 11B, 11A	Note B Note C
Aerial	400 ohms	7 MC.	7 MC.	Band Switch SW 1	19G	Roll tuning cond. Note C
Aerial	200 mmfd.	1500 KC.	1500 KC.	Band Switch "Brdcst"	19E	Roll tuning cond.
Aerial	200 mmfd.	600 KC.	600 KC.	Band Switch "Brdcst"	19F	Roll tuning cond.
Aerial	200 mmf.	1500 KC.	1500 KC.	Band Switch "Brdcst"	19E	Roll tuning cond.
Aerial	400 ohms	18 MC.	18 MC.	Band Switch 16 & 19 M.	19C, 19A	Note C
Aerial	400 ohms	12 MC.	12 MC.	Band Switch 25 to 31 M.	19D, 19B	Note C

NOTE A—The "Dummy Aerial" consists of a condenser or resistor connected in series with the signal generator output lead (highside). Use the capacity or resistance as specified in each step of the above procedure.

NOTE B—Dial Calibration: In order to adjust the receiver correctly the dial must be aligned to track properly with the tuning condenser. To adjust the dial, proceed as follows: With the tuning condenser closed (maximum capacity) set the dial pointer on the first mark on the left edge (low frequency end) of the broadcast scale.

NOTE C—When adjusting the oscillator compensators, be sure to tune in the fundamental signal instead of the image signal. If the compensator is correctly adjusted the image signal will be found by turning the signal generator dial 910 KC. above the fundamental signal.

Tuning Band Frequencies:

- Broadcast 540 to 1720 kc.
- SW 1 2.3 to 7.5 mc.
- SW 2 7.0 to 22 mc.
- Spread Band 1 9.4 to 12 mc.
- Spread Band 2 15.1 to 18 mc.