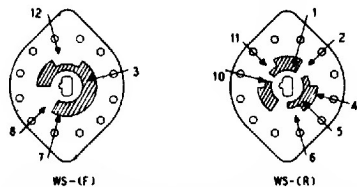
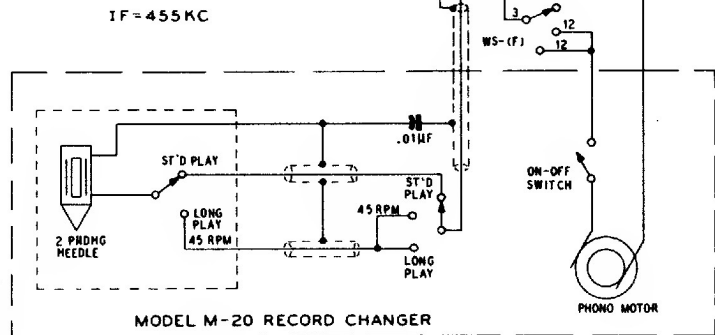
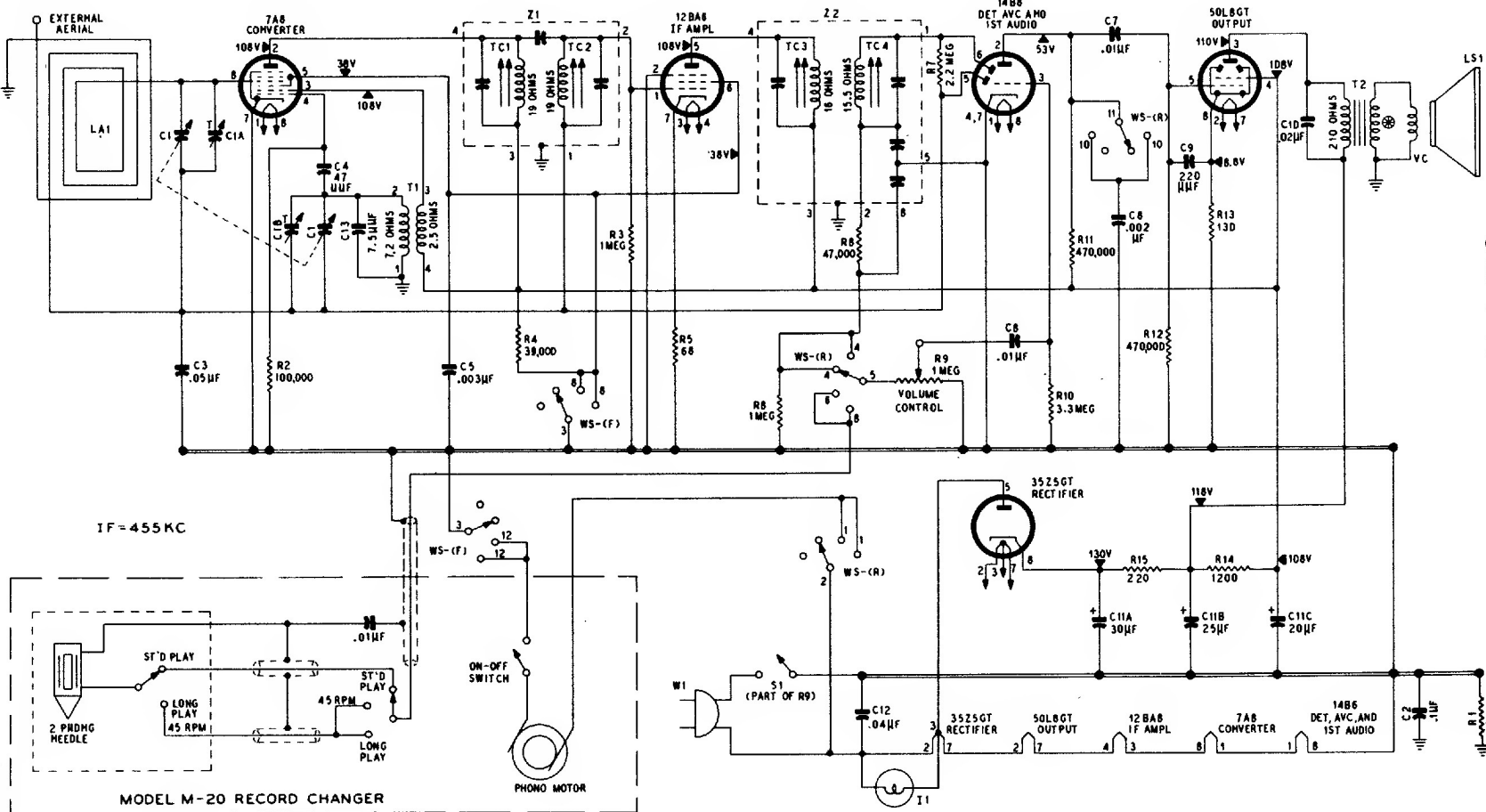
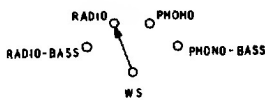


PHILCO MODEL 50-1424

ALL RESISTOR VALUES IN OHMS UNLESS OTHERWISE MARKED
 VOLTAGES MEASURED WITH 20000-OHMS-PER-VOLT VOLTMETER FROM POINTS INDICATED
 TO B MINUS AT A LINE VOLTAGE OF 117VAC
 Ⓢ LESS THAN 1 OHM



WAFER SWITCH SHOWN (IN RADIO POSITION) WITH CHASSIS INVERTED
 (F) INDICATES FRONT CONTACTS LOOKING FROM FRONT
 (R) INDICATES REAR CONTACTS LOOKING THROUGH FROM FRONT



STEP	SIGNAL GENERATOR		RADIO		ADJUST
	CONNECTION TO RADIO	DIAL SETTING	DIAL SETTING	SPECIAL INSTRUCTIONS	
1	Ground lead to B; output lead through .1- μ F. condenser to pin 6 of 7A8 tube.	455 kc.	540 kc. (gang fully meshed).	Adjust tuning cores, in order given, for maximum output.	TC4—2nd l-f pri. TC3—2nd l-f pri. TC2—1st l-f sec. TC1—1st l-f pri.
2	Radiating loop (see note below).	1600 kc.	1600 kc.	Adjust for maximum.	C1B—osc.
3	Same as step 2.	1500 kc.	1500 kc.	Adjust for maximum.	C1A—aerial