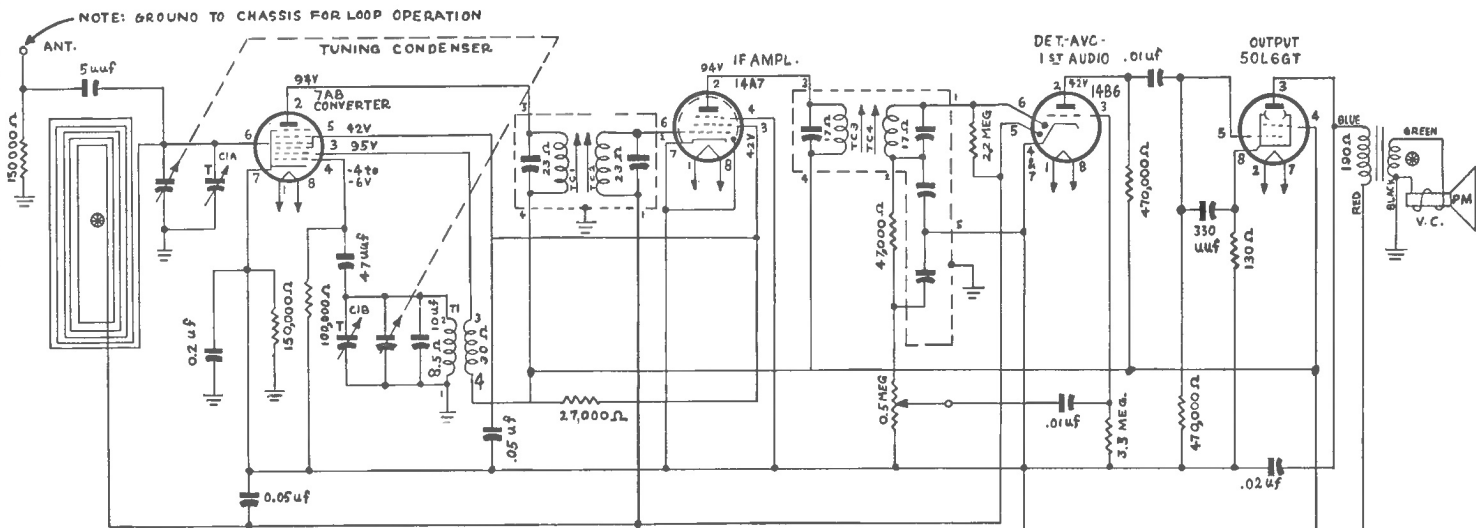


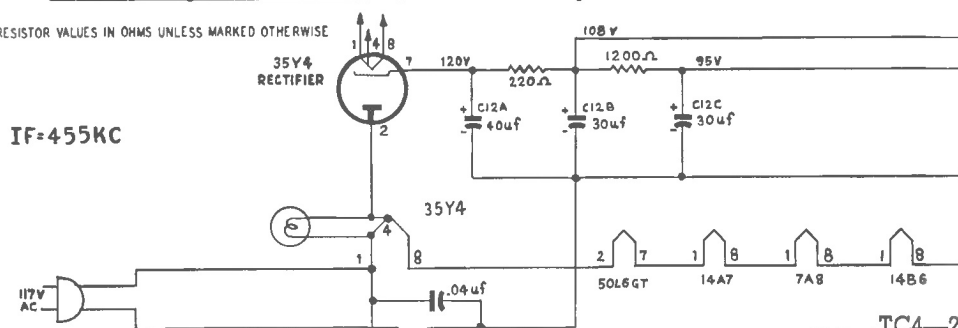
PHILCO RADIO-CLOCK, MODELS 51-537 and 51-537-1

Model 51-538 is identical in circuit to 51-537 here described. In some Model 51-538 sets (Code 122) a 12BA6 is used instead of 14A7. The Philco material in this manual is reprinted through the courtesy of Philco Corp.

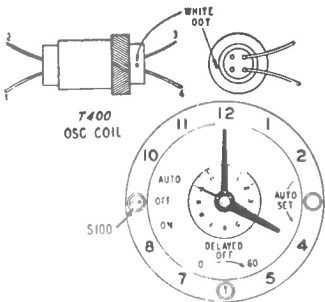


ALL RESISTOR VALUES IN OHMS UNLESS MARKED OTHERWISE

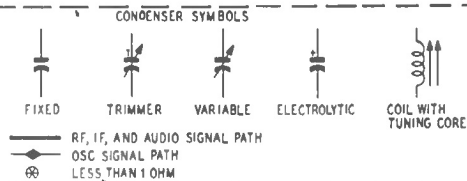
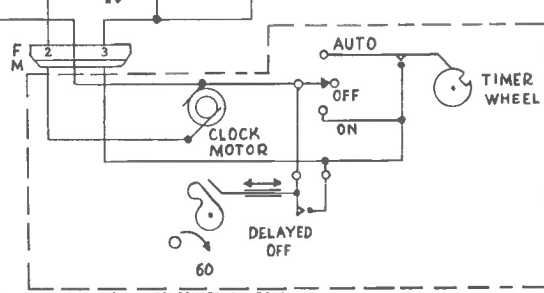
IF-455KC



NOTE: VOLTAGES SHOWN WERE MEASURED WITH 20,000 OHMS PER VOLT METER FROM POINTS INDICATED TO B MINUS AT A LINE VOLTAGE OF 117V AC



CLOCK ASSEMBLY



Top View, Showing Trimmer Location

TC1 and TC3 are located on underside of chassis.

