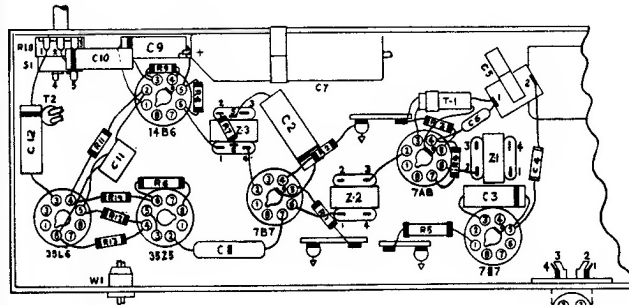
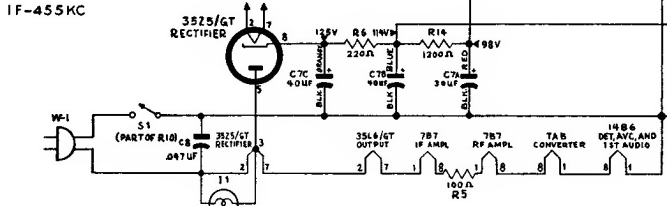
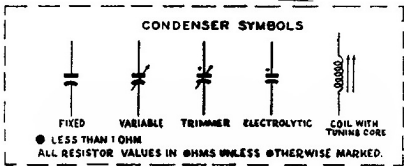
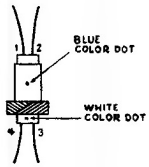
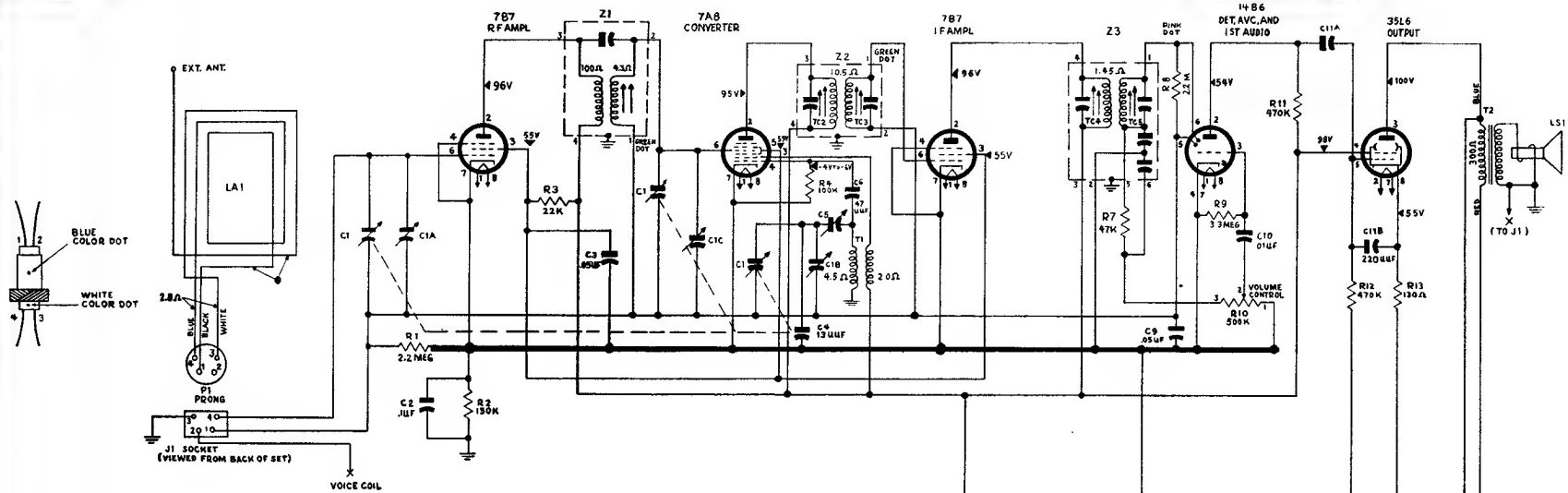
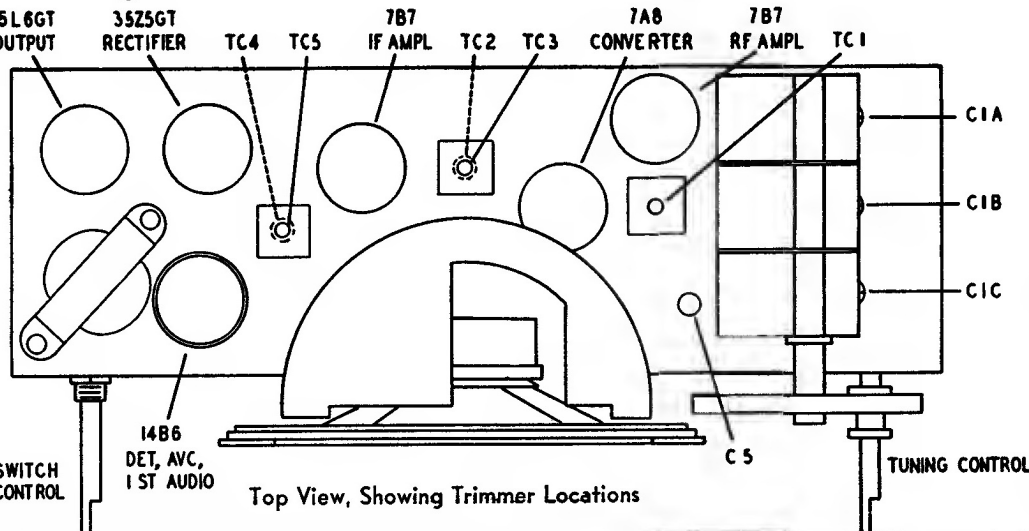


PHILCO RADIO MODELS 51-930, 51-931 AND 51-932



Symbolized Chassis, Showing Parts Placement



OFF-ON SWITCH VOLUME CONTROL

Top View, Showing Trimmer Locations

OSCILLATOR VOLTAGE MEASURED ACROSS R4, POSITIVE LEAD TO B-, NEGATIVE LEAD TO PIN #4 WITH A 100,000 OHM RESISTOR IN SERIES, 20,000 OHM/VOLT, 10VOLT RANGE. ALL OTHER VOLTAGES MEASURED WITH A 20,000-OHMS-PER-VOLT VOLTMETER BETWEEN POINTS INDICATED TO B-, AT A LINE VOLTAGE OF 117V AC.